



Welcome to [E-XFL.COM](https://www.e-xfl.com)

Embedded - System On Chip (SoC): The Heart of Modern Embedded Systems

Embedded - System On Chip (SoC) refers to an integrated circuit that consolidates all the essential components of a computer system into a single chip. This includes a microprocessor, memory, and other peripherals, all packed into one compact and efficient package. SoCs are designed to provide a complete computing solution, optimizing both space and power consumption, making them ideal for a wide range of embedded applications.

What are Embedded - System On Chip (SoC)?

System On Chip (SoC) integrates multiple functions of a computer or electronic system onto a single chip. Unlike traditional multi-chip solutions. SoCs combine a central

Details

Product Status	Active
Architecture	MCU, FPGA
Core Processor	Quad ARM® Cortex®-A53 MPCore™ with CoreSight™, Dual ARM®Cortex™-R5 with CoreSight™, ARM Mali™ -400 MP2
Flash Size	-
RAM Size	256KB
Peripherals	DMA, WDT
Connectivity	CANbus, EBI/EMI, Ethernet, I ² C, MMC/SD/SDIO, SPI, UART/USART, USB OTG
Speed	500MHz, 600MHz, 1.2GHz
Primary Attributes	Zynq@UltraScale+™ FPGA, 1143K+ Logic Cells
Operating Temperature	-40°C ~ 100°C (Tj)
Package / Case	1760-BBGA, FCBGA
Supplier Device Package	1760-FCBGA (42.5x42.5)
Purchase URL	https://www.e-xfl.com/product-detail/xilinx/xczu19eg-l1ffvc1760i

Quiescent Supply Current

Table 9: Typical Quiescent Supply Current⁽¹⁾⁽²⁾⁽³⁾⁽⁴⁾

Symbol	Description	Device	Speed Grade and V _{CCINT} Operating Voltages					Units
			0.90V	0.85V		0.72V		
			-3	-2	-1	-2	-1	
I _{CCINTQ}	Quiescent V _{CCINT} supply current.	XCZU2	N/A	393	393	344	344	mA
		XCZU3	N/A	393	393	344	344	mA
		XCZU4	719	684	684	601	601	mA
		XCZU5	719	684	684	601	601	mA
		XCZU6	1629	1549	1549	1358	1358	mA
		XCZU7	1263	1201	1201	1055	1055	mA
		XCZU9	1629	1549	1549	1358	1358	mA
		XCZU11	1786	1699	1699	1491	1491	mA
		XCZU15	1987	1890	1890	1660	1660	mA
		XCZU17	2728	2594	2594	2275	2275	mA
		XCZU19	2728	2594	2594	2275	2275	mA
I _{CCINT_IOQ}	Quiescent V _{CCINT_IO} supply current.	XCZU2	N/A	44	44	44	44	mA
		XCZU3	N/A	44	44	44	44	mA
		XCZU4	61	59	59	59	59	mA
		XCZU5	61	59	59	59	59	mA
		XCZU6	61	59	59	59	59	mA
		XCZU7	120	115	115	115	115	mA
		XCZU9	61	59	59	59	59	mA
		XCZU11	120	115	115	115	115	mA
		XCZU15	61	59	59	59	59	mA
		XCZU17	164	158	158	158	158	mA
		XCZU19	164	158	158	158	158	mA
I _{CCOQ}	Quiescent V _{CCO} supply current.	All devices	1	1	1	1	1	mA
I _{CCAUXQ}	Quiescent V _{CCAUX} supply current.	XCZU2	N/A	55	55	55	55	mA
		XCZU3	N/A	55	55	55	55	mA
		XCZU4	90	90	90	90	90	mA
		XCZU5	90	90	90	90	90	mA
		XCZU6	227	227	227	227	227	mA
		XCZU7	174	174	174	174	174	mA
		XCZU9	227	227	227	227	227	mA
		XCZU11	255	255	255	255	255	mA
		XCZU15	266	266	266	266	266	mA
		XCZU17	396	396	396	396	396	mA
		XCZU19	396	396	396	396	396	mA

Table 9: Typical Quiescent Supply Current⁽¹⁾⁽²⁾⁽³⁾⁽⁴⁾ (Cont'd)

Symbol	Description	Device	Speed Grade and V _{CCINT} Operating Voltages					Units
			0.90V	0.85V		0.72V		
			-3	-2	-1	-2	-1	
I _{CCAUX_IOQ}	Quiescent V _{CCAUX_IO} supply current.	XCZU2	N/A	26	26	26	26	mA
		XCZU3	N/A	26	26	26	26	mA
		XCZU4	32	32	32	32	32	mA
		XCZU5	32	32	32	32	32	mA
		XCZU6	33	33	33	33	33	mA
		XCZU7	56	56	56	56	56	mA
		XCZU9	33	33	33	33	33	mA
		XCZU11	56	56	56	56	56	mA
		XCZU15	33	33	33	33	33	mA
		XCZU17	74	74	74	74	74	mA
XCZU19	74	74	74	74	74	mA		
I _{CCBRAMQ}	Quiescent V _{CCBRAM} supply current.	XCZU2	N/A	6	6	6	6	mA
		XCZU3	N/A	6	6	6	6	mA
		XCZU4	9	9	9	9	9	mA
		XCZU5	9	9	9	9	9	mA
		XCZU6	25	24	24	24	24	mA
		XCZU7	16	15	15	15	15	mA
		XCZU9	25	24	24	24	24	mA
		XCZU11	23	22	22	22	22	mA
		XCZU15	29	28	28	28	28	mA
		XCZU17	37	35	35	35	35	mA
XCZU19	37	35	35	35	35	mA		

Notes:

1. Typical values are specified at nominal voltage, 85°C junction temperatures (T_j) with single-ended SelectIO™ resources.
2. Typical values are for blank configured devices with no output current loads, no active input pull-up resistors, all I/O pins are 3-state and floating.
3. Use the Xilinx Power Estimator (XPE) spreadsheet tool (download at www.xilinx.com/power) to estimate static power consumption for conditions or supplies other than those specified.
4. Typical values depend upon your configuration. To accurately estimate all PS supply currents, use the interactive XPE spreadsheet tool.

Table 15: SelectIO DC Input and Output Levels for HP I/O Banks⁽¹⁾⁽²⁾⁽³⁾

I/O Standard	V _{IL}		V _{IH}		V _{OL}	V _{OH}	I _{OL}	I _{OH}
	V, Min	V, Max	V, Min	V, Max	V, Max	V, Min	mA	mA
HSTL_I	-0.300	V _{REF} - 0.100	V _{REF} + 0.100	V _{CCO} + 0.300	0.400	V _{CCO} - 0.400	5.8	-5.8
HSTL_I_12	-0.300	V _{REF} - 0.080	V _{REF} + 0.080	V _{CCO} + 0.300	25% V _{CCO}	75% V _{CCO}	4.1	-4.1
HSTL_I_18	-0.300	V _{REF} - 0.100	V _{REF} + 0.100	V _{CCO} + 0.300	0.400	V _{CCO} - 0.400	6.2	-6.2
HSUL_12	-0.300	V _{REF} - 0.130	V _{REF} + 0.130	V _{CCO} + 0.300	20% V _{CCO}	80% V _{CCO}	0.1	-0.1
LVC MOS12	-0.300	35% V _{CCO}	65% V _{CCO}	V _{CCO} + 0.300	0.400	V _{CCO} - 0.400	Note 4	Note 4
LVC MOS15	-0.300	35% V _{CCO}	65% V _{CCO}	V _{CCO} + 0.300	0.450	V _{CCO} - 0.450	Note 5	Note 5
LVC MOS18	-0.300	35% V _{CCO}	65% V _{CCO}	V _{CCO} + 0.300	0.450	V _{CCO} - 0.450	Note 5	Note 5
LVDCI_15	-0.300	35% V _{CCO}	65% V _{CCO}	V _{CCO} + 0.300	0.450	V _{CCO} - 0.450	7.0	-7.0
LVDCI_18	-0.300	35% V _{CCO}	65% V _{CCO}	V _{CCO} + 0.300	0.450	V _{CCO} - 0.450	7.0	-7.0
SSTL12	-0.300	V _{REF} - 0.100	V _{REF} + 0.100	V _{CCO} + 0.300	V _{CCO} /2 - 0.150	V _{CCO} /2 + 0.150	8.0	-8.0
SSTL135	-0.300	V _{REF} - 0.090	V _{REF} + 0.090	V _{CCO} + 0.300	V _{CCO} /2 - 0.150	V _{CCO} /2 + 0.150	9.0	-9.0
SSTL15	-0.300	V _{REF} - 0.100	V _{REF} + 0.100	V _{CCO} + 0.300	V _{CCO} /2 - 0.175	V _{CCO} /2 + 0.175	10.0	-10.0
SSTL18_I	-0.300	V _{REF} - 0.125	V _{REF} + 0.125	V _{CCO} + 0.300	V _{CCO} /2 - 0.470	V _{CCO} /2 + 0.470	7.0	-7.0
MIPI_DPHY_DCI_LP ⁽⁶⁾	-0.300	0.550	0.880	V _{CCO} + 0.300	0.050	1.100	0.01	-0.01

Notes:

1. Tested according to relevant specifications.
2. Standards specified using the default I/O standard configuration. For details, see the *UltraScale Architecture SelectIO Resources User Guide* ([UG571](#)).
3. POD10 and POD12 DC input and output levels are shown in [Table 16](#), [Table 20](#), [Table 21](#), and [Table 22](#).
4. Supported drive strengths of 2, 4, 6, or 8 mA in HP I/O banks.
5. Supported drive strengths of 2, 4, 6, 8, or 12 mA in HP I/O banks.
6. Low-power option for MIPI_DPHY_DCI.

Table 16: DC Input Levels for Single-ended POD10 and POD12 I/O Standards⁽¹⁾⁽²⁾

I/O Standard	V _{IL}		V _{IH}	
	V, Min	V, Max	V, Min	V, Max
POD10	-0.300	V _{REF} - 0.068	V _{REF} + 0.068	V _{CCO} + 0.300
POD12	-0.300	V _{REF} - 0.068	V _{REF} + 0.068	V _{CCO} + 0.300

Notes:

1. Tested according to relevant specifications.
2. Standards specified using the default I/O standard configuration. For details, see the *UltraScale Architecture SelectIO Resources User Guide* ([UG571](#)).

Speed Grade Designations

Since individual family members are produced at different times, the migration from one category to another depends completely on the status of the fabrication process for each device. [Table 26](#) correlates the current status of the Zynq UltraScale+ MPSoC on a per speed grade basis. See [Table 3](#) for operating voltages listed by speed grade.

Table 26: Speed Grade Designations by Device

Device	Speed Grade, Temperature Ranges, and V_{CCINT} Operating Voltages		
	Advance	Preliminary	Production
XCZU2CG	-2LE ($V_{CCINT} = 0.85V$) -2LE ($V_{CCINT} = 0.72V$) -1LI ($V_{CCINT} = 0.85V$) -1LI ($V_{CCINT} = 0.72V$)		-2E ($V_{CCINT} = 0.85V$) -2I ($V_{CCINT} = 0.85V$) -1E ($V_{CCINT} = 0.85V$) -1I ($V_{CCINT} = 0.85V$)
XCZU2EG	-2LE ($V_{CCINT} = 0.85V$) -2LE ($V_{CCINT} = 0.72V$) -1LI ($V_{CCINT} = 0.85V$) -1LI ($V_{CCINT} = 0.72V$)		-2E ($V_{CCINT} = 0.85V$) -2I ($V_{CCINT} = 0.85V$) -1E ($V_{CCINT} = 0.85V$) -1I ($V_{CCINT} = 0.85V$)
XCZU3CG	-2LE ($V_{CCINT} = 0.85V$) -2LE ($V_{CCINT} = 0.72V$) -1LI ($V_{CCINT} = 0.85V$) -1LI ($V_{CCINT} = 0.72V$)		-2E ($V_{CCINT} = 0.85V$) -2I ($V_{CCINT} = 0.85V$) -1E ($V_{CCINT} = 0.85V$) -1I ($V_{CCINT} = 0.85V$)
XCZU3EG	-2LE ($V_{CCINT} = 0.85V$) -2LE ($V_{CCINT} = 0.72V$) -1LI ($V_{CCINT} = 0.85V$) -1LI ($V_{CCINT} = 0.72V$)		-2E ($V_{CCINT} = 0.85V$) -2I ($V_{CCINT} = 0.85V$) -1E ($V_{CCINT} = 0.85V$) -1I ($V_{CCINT} = 0.85V$)
XCZU4CG	-2E ($V_{CCINT} = 0.85V$) -2I ($V_{CCINT} = 0.85V$), -2LE ($V_{CCINT} = 0.85V$) -1E ($V_{CCINT} = 0.85V$), -1I ($V_{CCINT} = 0.85V$) -1LI ($V_{CCINT} = 0.85V$) -2LE ($V_{CCINT} = 0.72V$), -1LI ($V_{CCINT} = 0.72V$)		
XCZU4EG	-3E ($V_{CCINT} = 0.90V$), -2E ($V_{CCINT} = 0.85V$) -2I ($V_{CCINT} = 0.85V$), -2LE ($V_{CCINT} = 0.85V$) -1E ($V_{CCINT} = 0.85V$), -1I ($V_{CCINT} = 0.85V$) -1LI ($V_{CCINT} = 0.85V$) -2LE ($V_{CCINT} = 0.72V$), -1LI ($V_{CCINT} = 0.72V$)		
XCZU4EV	-3E ($V_{CCINT} = 0.90V$), -2E ($V_{CCINT} = 0.85V$) -2I ($V_{CCINT} = 0.85V$), -2LE ($V_{CCINT} = 0.85V$) -1E ($V_{CCINT} = 0.85V$), -1I ($V_{CCINT} = 0.85V$) -1LI ($V_{CCINT} = 0.85V$) -2LE ($V_{CCINT} = 0.72V$), -1LI ($V_{CCINT} = 0.72V$)		
XCZU5CG	-2E ($V_{CCINT} = 0.85V$) -2I ($V_{CCINT} = 0.85V$), -2LE ($V_{CCINT} = 0.85V$) -1E ($V_{CCINT} = 0.85V$), -1I ($V_{CCINT} = 0.85V$) -1LI ($V_{CCINT} = 0.85V$) -2LE ($V_{CCINT} = 0.72V$), -1LI ($V_{CCINT} = 0.72V$)		

Table 30: PS DDR Performance (Cont'd)

Memory Standard	Package	DRAM Type	Speed Grade						Units
			-3		-2		-1		
			Min	Max	Min	Max	Min	Max	
DDR3	All FFV packages, FBVB900 and SFVC784	Single rank component	664	2133	664	2133	664	2133	Mb/s
		1 rank DIMM ⁽¹⁾⁽²⁾	664	1866	664	1866	664	1866	Mb/s
		2 rank DIMM ⁽¹⁾⁽³⁾	664	1600	664	1600	664	1600	Mb/s
	SFVA625	Single rank component	664	1866	664	1866	664	1866	Mb/s
		1 rank DIMM ⁽¹⁾⁽²⁾	664	1600	664	1600	664	1600	Mb/s
		2 rank DIMM ⁽¹⁾⁽³⁾	664	1333	664	1333	664	1333	Mb/s
	SBVA484	Single rank component	664	1066	664	1066	664	1066	Mb/s
		1 rank DIMM ⁽¹⁾⁽²⁾	664	1066	664	1066	664	1066	Mb/s
		2 rank DIMM ⁽¹⁾⁽³⁾	664	1066	664	1066	664	1066	Mb/s
DDR3L	All FFV packages, FBVB900 and SFVC784	Single rank component	664	1866	664	1866	664	1866	Mb/s
		1 rank DIMM ⁽¹⁾⁽²⁾	664	1600	664	1600	664	1600	Mb/s
		2 rank DIMM ⁽¹⁾⁽³⁾	664	1333	664	1333	664	1333	Mb/s
	SFVA625	Single rank component	664	1600	664	1600	664	1600	Mb/s
		1 rank DIMM ⁽¹⁾⁽²⁾	664	1333	664	1333	664	1333	Mb/s
		2 rank DIMM ⁽¹⁾⁽³⁾	664	1066	664	1066	664	1066	Mb/s
	SBVA484	Single rank component	664	1066	664	1066	664	1066	Mb/s
		1 rank DIMM ⁽¹⁾⁽²⁾	664	1066	664	1066	664	1066	Mb/s
		2 rank DIMM ⁽¹⁾⁽³⁾	664	1066	664	1066	664	1066	Mb/s
LPDDR3	All FFV packages, FBVB900 and SFVC784	Single die package ⁽⁶⁾	664	1600	664	1600	664	1600	Mb/s
		Dual die package ⁽⁶⁾	664	1333	664	1333	664	1333	Mb/s
	SFVA625	Single die package ⁽⁶⁾	664	1333	664	1333	664	1333	Mb/s
		Dual die package ⁽⁶⁾	664	1066	664	1066	664	1066	Mb/s
	SBVA484	Single die package ⁽⁶⁾	664	1066	664	1066	664	1066	Mb/s
		Dual die package ⁽⁶⁾	664	1066	664	1066	664	1066	Mb/s

Notes:

1. Dual in-line memory module (DIMM) includes RDIMM, SODIMM, and UDIMM.
2. Includes: 1 rank 1 slot, dual-die package 2 rank.
3. Includes: 2 rank 1 slot.
4. Dual die package includes single die with ECC.
5. LPDDR4 support is only available as a 32-bit interface.
6. 64-bit LPDDR3 interface performance values are defined without ECC support.

Table 45: SD/SDIO Interface⁽¹⁾ (Cont'd)

Symbol	Description	Min	Max	Units
F _{SDSDRCLK2}	SDR50 mode device clock frequency.	–	100	MHz
	SDR25 mode device clock frequency.	–	50	MHz
SD/SDIO Interface SDR12				
T _{DCSDHCLK3}	SD device clock duty cycle.	40	60	%
T _{SDSDRCKO3}	Clock to output delay, all outputs.	1.0	36.8	ns
T _{SDSDRDCK3}	Input setup time, all inputs.	24.0	–	ns
T _{SDSDRCKD3}	Input hold time, all inputs.	1.5	–	ns
F _{SDSDRCLK3}	SDR12 mode device clock frequency.	–	25	MHz
SD/SDIO Interface High-Speed Mode				
T _{DCSDHCLK}	SD device clock duty cycle.	47	53	%
T _{SDHCKO}	Clock to output delay, all outputs. ⁽²⁾	2.2	13.8	ns
T _{SDHSDIVW}	Input valid data window. ⁽³⁾	0.35	–	UI
F _{SDHCLK}	High-speed mode SD device clock frequency.	–	50	MHz
SD/SDIO Interface Standard Mode				
T _{DCSDSCLK}	SD device clock duty cycle.	45	55	%
T _{SDSCKO}	Clock to output delay, all outputs.	–2.0	4.5	ns
T _{SDSDCK}	Input setup time, all inputs.	2.0	–	ns
T _{SDSCKD}	Input hold time, all inputs.	2.0	–	ns
F _{SDIDCLK}	Clock frequency in identification mode.	–	400	KHz
F _{SDSCLK}	Standard SD device clock frequency.	–	19	MHz

Notes:

1. The test conditions SD/SDIO standard mode (default speed mode) use an 8 mA drive strength, fast slew rate, and a 30 pF load. For SD/SDIO high-speed mode, the test conditions use a 12 mA drive strength, fast slew rate, and a 30 pF load. For other SD/SDIO modes, the test conditions use a 12 mA drive strength, fast slew rate, and a 15 pF load.
2. This specification is achieved using pre-determined DLL tuning.
3. This specification is required for capturing input data using DLL tuning.

Table 72: MIPI D-PHY Performance

Description	I/O Bank Type	Speed Grade and V _{CCINT} Operating Voltages					Units
		0.90V	0.85V		0.72V		
		-3 ⁽¹⁾	-2 ⁽¹⁾	-1	-2	-1	
MIPI D-PHY transmitter or receiver.	HP	1500	1500	1260	1260	1260	Mb/s

Notes:

1. In the SBVA484 package, the data rate is 1260 Mb/s.

Table 73: LVDS Native-Mode 1000BASE-X Support⁽¹⁾

Description	I/O Bank Type	Speed Grade and V _{CCINT} Operating Voltages				
		0.90V	0.85V		0.72V	
		-3	-2	-1	-2	-1
1000BASE-X	HP	Yes				

Notes:

1. 1000BASE-X support is based on the *IEEE Standard for CSMA/CD Access Method and Physical Layer Specifications* (IEEE Std 802.3-2008).

Table 74 provides the maximum data rates for applicable memory standards using the Zynq UltraScale+ MPSoC memory PHY. Refer to [Memory Interfaces](#) for the complete list of memory interface standards supported and detailed specifications. The final performance of the memory interface is determined through a complete design implemented in the Vivado Design Suite, following guidelines in the *UltraScale Architecture PCB Design Guide* ([UG583](#)), electrical analysis, and characterization of the system.

Table 74: Maximum Physical Interface (PHY) Rate for Memory Interfaces

Memory Standard	Package ⁽¹⁾	DRAM Type	Speed Grade and V _{CCINT} Operating Voltages					Units
			0.90V	0.85V		0.72V		
			-3	-2	-1	-2	-1	
DDR4	All FFV packages and FBVB900	Single rank component	2666	2666	2400	2400	2133	Mb/s
		1 rank DIMM ⁽²⁾⁽³⁾⁽⁴⁾	2400	2400	2133	2133	1866	Mb/s
		2 rank DIMM ⁽²⁾⁽⁵⁾	2133	2133	1866	1866	1600	Mb/s
		4 rank DIMM ⁽²⁾⁽⁶⁾	1600	1600	1333	1333	N/A	Mb/s
	SFVC784	Single rank component	2400	2400	2133	2133	1866	Mb/s
		1 rank DIMM ⁽²⁾⁽³⁾	2133	2133	1866	1866	1600	Mb/s
DDR3	All FFV packages and FBVB900	Single rank component	2133	2133	2133	2133	1866	Mb/s
		1 rank DIMM ⁽²⁾⁽³⁾	1866	1866	1866	1866	1600	Mb/s
		2 rank DIMM ⁽²⁾⁽⁵⁾	1600	1600	1600	1600	1333	Mb/s
		4 rank DIMM ⁽²⁾⁽⁶⁾	1066	1066	1066	1066	800	Mb/s
	SFVC784	Single rank component	1866	1866	1866	1866	1600	Mb/s
		1 rank DIMM ⁽²⁾⁽³⁾	1600	1600	1600	1600	1600	Mb/s
		2 rank DIMM ⁽²⁾⁽⁵⁾	1600	1600	1600	1600	1333	Mb/s
		4 rank DIMM ⁽²⁾⁽⁶⁾	1066	1066	1066	1066	800	Mb/s

Programmable Logic (PL) Switching Characteristics

Table 75 (high-density IOB (HD)) and Table 76 (high-performance IOB (HP)) summarizes the values of standard-specific data input delay adjustments, output delays terminating at pads (based on standard) and 3-state delays.

- $T_{INBUF_DELAY_PAD_I}$ is the delay from IOB pad through the input buffer to the I-pin of an IOB pad. The delay varies depending on the capability of the SelectIO input buffer.
- $T_{OUTBUF_DELAY_O_PAD}$ is the delay from the O pin to the IOB pad through the output buffer of an IOB pad. The delay varies depending on the capability of the SelectIO output buffer.
- $T_{OUTBUF_DELAY_TD_PAD}$ is the delay from the T pin to the IOB pad through the output buffer of an IOB pad, when 3-state is disabled. The delay varies depending on the SelectIO capability of the output buffer. In HP I/O banks, the internal DCI termination turn-on time is always faster than $T_{OUTBUF_DELAY_TD_PAD}$ when the DCITERMDISABLE pin is used. In HD I/O banks, the on-die termination turn-on time is always faster than $T_{OUTBUF_DELAY_TD_PAD}$ when the INTERMDISABLE pin is used.

IOB High Density (HD) Switching Characteristics

Table 75: IOB High Density (HD) Switching Characteristics

I/O Standards	$T_{INBUF_DELAY_PAD_I}$					$T_{OUTBUF_DELAY_O_PAD}$					$T_{OUTBUF_DELAY_TD_PAD}$					Units
	0.90V		0.85V		0.72V	0.90V		0.85V		0.72V	0.90V		0.85V		0.72V	
	-3	-2	-1	-2	-1	-3	-2	-1	-2	-1	-3	-2	-1	-2	-1	
DIFF_HSTL_I_18_F	0.978	0.978	1.058	0.978	1.058	1.574	1.574	1.718	1.574	1.718	1.160	1.160	1.271	1.160	1.271	ns
DIFF_HSTL_I_18_S	0.978	0.978	1.058	0.978	1.058	1.805	1.805	1.950	1.805	1.950	1.748	1.748	1.867	1.748	1.867	ns
DIFF_HSTL_I_F	0.978	0.978	1.058	0.978	1.058	1.611	1.611	1.762	1.611	1.762	1.313	1.313	1.417	1.313	1.417	ns
DIFF_HSTL_I_S	0.978	0.978	1.058	0.978	1.058	1.798	1.798	1.913	1.798	1.913	1.630	1.630	1.780	1.630	1.780	ns
DIFF_HSUL_12_F	0.911	0.911	0.977	0.911	0.977	1.573	1.573	1.703	1.573	1.703	1.222	1.222	1.335	1.222	1.335	ns
DIFF_HSUL_12_S	0.911	0.911	0.977	0.911	0.977	1.711	1.711	1.864	1.711	1.864	1.536	1.536	1.665	1.536	1.665	ns
DIFF_SSTL12_F	0.906	0.906	0.977	0.906	0.977	1.643	1.643	1.792	1.643	1.792	1.285	1.285	1.423	1.285	1.423	ns
DIFF_SSTL12_S	0.906	0.906	0.977	0.906	0.977	1.784	1.784	1.948	1.784	1.948	1.567	1.567	1.706	1.567	1.706	ns
DIFF_SSTL135_F	0.927	0.927	0.995	0.927	0.995	1.625	1.625	1.765	1.625	1.765	1.341	1.341	1.458	1.341	1.458	ns
DIFF_SSTL135_II_F	0.927	0.927	0.995	0.927	0.995	1.623	1.623	1.770	1.623	1.770	1.325	1.325	1.470	1.325	1.470	ns
DIFF_SSTL135_II_S	0.927	0.927	0.995	0.927	0.995	1.768	1.768	1.916	1.768	1.916	1.722	1.722	1.911	1.722	1.911	ns
DIFF_SSTL135_S	0.927	0.927	0.995	0.927	0.995	1.869	1.869	2.025	1.869	2.025	1.814	1.814	1.976	1.814	1.976	ns
DIFF_SSTL15_F	0.928	0.928	1.020	0.928	1.020	1.628	1.628	1.771	1.628	1.771	1.374	1.374	1.483	1.374	1.483	ns
DIFF_SSTL15_II_F	0.928	0.928	1.020	0.928	1.020	1.622	1.622	1.778	1.622	1.778	1.356	1.356	1.442	1.356	1.442	ns
DIFF_SSTL15_II_S	0.928	0.928	1.020	0.928	1.020	1.821	1.821	1.987	1.821	1.987	1.895	1.895	2.047	1.895	2.047	ns
DIFF_SSTL15_S	0.928	0.928	1.020	0.928	1.020	1.824	1.824	1.977	1.824	1.977	1.743	1.743	1.907	1.743	1.907	ns
DIFF_SSTL18_II_F	0.961	0.961	1.038	0.961	1.038	1.729	1.729	1.880	1.729	1.880	1.377	1.377	1.492	1.377	1.492	ns
DIFF_SSTL18_II_S	0.961	0.961	1.038	0.961	1.038	1.796	1.796	1.965	1.796	1.965	1.616	1.616	1.800	1.616	1.800	ns
DIFF_SSTL18_I_F	0.961	0.961	1.038	0.961	1.038	1.609	1.609	1.755	1.609	1.755	1.220	1.220	1.313	1.220	1.313	ns
DIFF_SSTL18_I_S	0.961	0.961	1.038	0.961	1.038	1.786	1.786	1.942	1.786	1.942	1.677	1.677	1.836	1.677	1.836	ns
HSTL_I_18_F	0.947	0.947	1.021	0.947	1.021	1.574	1.574	1.718	1.574	1.718	1.160	1.160	1.271	1.160	1.271	ns
HSTL_I_18_S	0.947	0.947	1.021	0.947	1.021	1.805	1.805	1.950	1.805	1.950	1.748	1.748	1.867	1.748	1.867	ns

Table 75: IOB High Density (HD) Switching Characteristics (Cont'd)

I/O Standards	T _{INBUF_DELAY_PAD_I}					T _{OUTBUF_DELAY_O_PAD}					T _{OUTBUF_DELAY_TD_PAD}					Units
	0.90V		0.85V		0.72V	0.90V		0.85V		0.72V	0.90V		0.85V		0.72V	
	-3	-2	-1	-2	-1	-3	-2	-1	-2	-1	-3	-2	-1	-2	-1	
HSTL_I_F	0.856	0.856	0.900	0.856	0.900	1.611	1.611	1.762	1.611	1.762	1.313	1.313	1.417	1.313	1.417	ns
HSTL_I_S	0.856	0.856	0.900	0.856	0.900	1.798	1.798	1.913	1.798	1.913	1.630	1.630	1.780	1.630	1.780	ns
HSUL_12_F	0.780	0.780	0.867	0.780	0.867	1.573	1.573	1.703	1.573	1.703	1.222	1.222	1.335	1.222	1.335	ns
HSUL_12_S	0.780	0.780	0.867	0.780	0.867	1.711	1.711	1.864	1.711	1.864	1.536	1.536	1.665	1.536	1.665	ns
LVC MOS12_F_12	0.918	0.918	0.976	0.918	0.976	1.689	1.689	1.856	1.689	1.856	1.202	1.202	1.317	1.202	1.317	ns
LVC MOS12_F_4	0.918	0.918	0.976	0.918	0.976	1.742	1.742	1.922	1.742	1.922	1.353	1.353	1.478	1.353	1.478	ns
LVC MOS12_F_8	0.918	0.918	0.976	0.918	0.976	1.714	1.714	1.879	1.714	1.879	1.292	1.292	1.432	1.292	1.432	ns
LVC MOS12_S_12	0.918	0.918	0.976	0.918	0.976	2.073	2.073	2.247	2.073	2.247	1.581	1.581	1.717	1.581	1.717	ns
LVC MOS12_S_4	0.918	0.918	0.976	0.918	0.976	1.979	1.979	2.182	1.979	2.182	1.633	1.633	1.772	1.633	1.772	ns
LVC MOS12_S_8	0.918	0.918	0.976	0.918	0.976	2.205	2.205	2.406	2.205	2.406	1.767	1.767	1.928	1.767	1.928	ns
LVC MOS15_F_12	0.905	0.905	0.958	0.905	0.958	1.713	1.713	1.892	1.713	1.892	1.275	1.275	1.428	1.275	1.428	ns
LVC MOS15_F_16	0.905	0.905	0.958	0.905	0.958	1.722	1.722	1.881	1.722	1.881	1.260	1.260	1.407	1.260	1.407	ns
LVC MOS15_F_4	0.905	0.905	0.958	0.905	0.958	1.825	1.825	1.959	1.825	1.959	1.453	1.453	1.557	1.453	1.557	ns
LVC MOS15_F_8	0.905	0.905	0.958	0.905	0.958	1.778	1.778	1.930	1.778	1.930	1.378	1.378	1.458	1.378	1.458	ns
LVC MOS15_S_12	0.905	0.905	0.958	0.905	0.958	1.991	1.991	2.139	1.991	2.139	1.516	1.516	1.648	1.516	1.648	ns
LVC MOS15_S_16	0.905	0.905	0.958	0.905	0.958	2.172	2.172	2.389	2.172	2.389	1.707	1.707	1.888	1.707	1.888	ns
LVC MOS15_S_4	0.905	0.905	0.958	0.905	0.958	2.313	2.313	2.483	2.313	2.483	1.952	1.952	2.123	1.952	2.123	ns
LVC MOS15_S_8	0.905	0.905	0.958	0.905	0.958	2.170	2.170	2.400	2.170	2.400	1.817	1.817	1.984	1.817	1.984	ns
LVC MOS18_F_12	0.915	0.915	0.958	0.915	0.958	1.805	1.805	1.962	1.805	1.962	1.383	1.383	1.471	1.383	1.471	ns
LVC MOS18_F_16	0.915	0.915	0.958	0.915	0.958	1.785	1.785	1.917	1.785	1.917	1.338	1.338	1.446	1.338	1.446	ns
LVC MOS18_F_4	0.915	0.915	0.958	0.915	0.958	1.868	1.868	2.013	1.868	2.013	1.472	1.472	1.599	1.472	1.599	ns
LVC MOS18_F_8	0.915	0.915	0.958	0.915	0.958	1.797	1.797	1.979	1.797	1.979	1.384	1.384	1.487	1.384	1.487	ns
LVC MOS18_S_12	0.915	0.915	0.958	0.915	0.958	2.201	2.201	2.408	2.201	2.408	1.762	1.762	1.894	1.762	1.894	ns
LVC MOS18_S_16	0.915	0.915	0.958	0.915	0.958	2.173	2.173	2.362	2.173	2.362	1.702	1.702	1.834	1.702	1.834	ns
LVC MOS18_S_4	0.915	0.915	0.958	0.915	0.958	2.346	2.346	2.567	2.346	2.567	1.951	1.951	2.092	1.951	2.092	ns
LVC MOS18_S_8	0.915	0.915	0.958	0.915	0.958	2.292	2.292	2.511	2.292	2.511	1.848	1.848	2.008	1.848	2.008	ns
LVC MOS25_F_12	0.988	0.988	1.042	0.988	1.042	2.153	2.153	2.453	2.153	2.453	1.692	1.692	1.856	1.692	1.856	ns
LVC MOS25_F_16	0.988	0.988	1.042	0.988	1.042	2.105	2.105	2.406	2.105	2.406	1.623	1.623	1.786	1.623	1.786	ns
LVC MOS25_F_4	0.988	0.988	1.042	0.988	1.042	2.344	2.344	2.554	2.344	2.554	1.842	1.842	2.039	1.842	2.039	ns
LVC MOS25_F_8	0.988	0.988	1.042	0.988	1.042	2.184	2.184	2.516	2.184	2.516	1.726	1.726	1.910	1.726	1.910	ns
LVC MOS25_S_12	0.988	0.988	1.042	0.988	1.042	2.558	2.558	2.840	2.558	2.840	1.971	1.971	2.194	1.971	2.194	ns
LVC MOS25_S_16	0.988	0.988	1.042	0.988	1.042	2.449	2.449	2.740	2.449	2.740	1.852	1.852	2.063	1.852	2.063	ns
LVC MOS25_S_4	0.988	0.988	1.042	0.988	1.042	2.770	2.770	3.066	2.770	3.066	2.224	2.224	2.458	2.224	2.458	ns
LVC MOS25_S_8	0.988	0.988	1.042	0.988	1.042	2.663	2.663	2.963	2.663	2.963	2.091	2.091	2.373	2.091	2.373	ns
LVC MOS33_F_12	1.154	1.154	1.213	1.154	1.213	2.415	2.415	2.651	2.415	2.651	1.754	1.754	1.915	1.754	1.915	ns
LVC MOS33_F_16	1.154	1.154	1.213	1.154	1.213	2.383	2.383	2.603	2.383	2.603	1.734	1.734	1.869	1.734	1.869	ns
LVC MOS33_F_4	1.154	1.154	1.213	1.154	1.213	2.541	2.541	2.765	2.541	2.765	1.932	1.932	2.135	1.932	2.135	ns
LVC MOS33_F_8	1.154	1.154	1.213	1.154	1.213	2.603	2.603	2.822	2.603	2.822	1.937	1.937	2.130	1.937	2.130	ns
LVC MOS33_S_12	1.154	1.154	1.213	1.154	1.213	2.705	2.705	3.047	2.705	3.047	2.049	2.049	2.318	2.049	2.318	ns
LVC MOS33_S_16	1.154	1.154	1.213	1.154	1.213	2.714	2.714	3.024	2.714	3.024	2.028	2.028	2.232	2.028	2.232	ns
LVC MOS33_S_4	1.154	1.154	1.213	1.154	1.213	2.999	2.999	3.340	2.999	3.340	2.320	2.320	2.610	2.320	2.610	ns

Table 76: IOB High Performance (HP) Switching Characteristics (Cont'd)

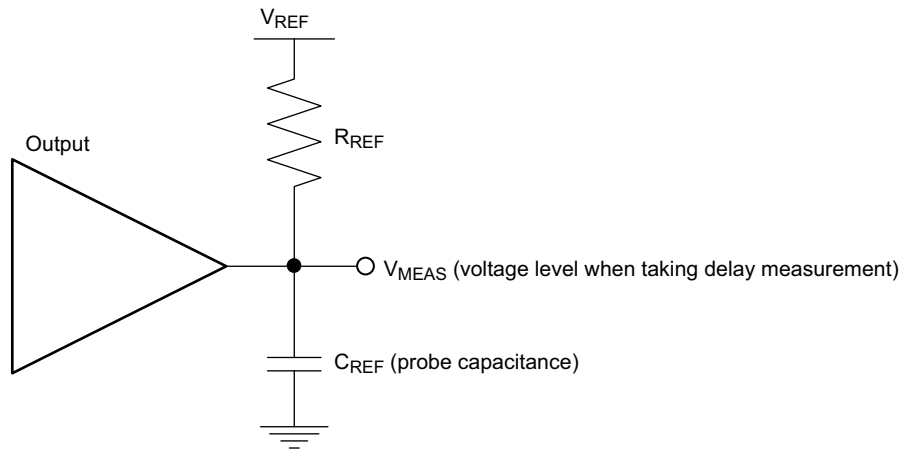
I/O Standards	T _{INBUF_DELAY_PAD_I}					T _{OUTBUF_DELAY_O_PAD}					T _{OUTBUF_DELAY_TD_PAD}					Units
	0.90V		0.85V		0.72V	0.90V		0.85V		0.72V	0.90V		0.85V		0.72V	
	-3	-2	-1	-2	-1	-3	-2	-1	-2	-1	-3	-2	-1	-2	-1	
HSTL_I_DCI_S	0.393	0.393	0.415	0.393	0.415	0.766	0.766	0.821	0.766	0.821	0.847	0.847	0.912	0.847	0.912	ns
HSTL_I_F	0.378	0.378	0.399	0.378	0.399	0.423	0.423	0.443	0.423	0.443	0.549	0.549	0.581	0.549	0.581	ns
HSTL_I_M	0.378	0.378	0.399	0.378	0.399	0.554	0.554	0.585	0.554	0.585	0.640	0.640	0.677	0.640	0.677	ns
HSTL_I_S	0.378	0.378	0.399	0.378	0.399	0.766	0.766	0.816	0.766	0.816	0.811	0.811	0.866	0.811	0.866	ns
HSUL_12_DCI_F	0.378	0.378	0.399	0.378	0.399	0.425	0.425	0.443	0.425	0.443	0.558	0.558	0.586	0.558	0.586	ns
HSUL_12_DCI_M	0.378	0.378	0.399	0.378	0.399	0.556	0.556	0.586	0.556	0.586	0.654	0.654	0.694	0.654	0.694	ns
HSUL_12_DCI_S	0.378	0.378	0.399	0.378	0.399	0.736	0.736	0.784	0.736	0.784	0.821	0.821	0.886	0.821	0.886	ns
HSUL_12_F	0.378	0.378	0.399	0.378	0.399	0.412	0.412	0.430	0.412	0.430	0.538	0.538	0.566	0.538	0.566	ns
HSUL_12_M	0.378	0.378	0.399	0.378	0.399	0.551	0.551	0.582	0.551	0.582	0.642	0.642	0.679	0.642	0.679	ns
HSUL_12_S	0.378	0.378	0.399	0.378	0.399	0.750	0.750	0.799	0.750	0.799	0.813	0.813	0.868	0.813	0.868	ns
LVC MOS12_F_2	0.512	0.512	0.555	0.512	0.555	0.672	0.672	0.692	0.672	0.692	0.898	0.898	0.922	0.898	0.922	ns
LVC MOS12_F_4	0.512	0.512	0.555	0.512	0.555	0.504	0.504	0.521	0.504	0.521	0.664	0.664	0.693	0.664	0.693	ns
LVC MOS12_F_6	0.512	0.512	0.555	0.512	0.555	0.485	0.485	0.507	0.485	0.507	0.634	0.634	0.669	0.634	0.669	ns
LVC MOS12_F_8	0.512	0.512	0.555	0.512	0.555	0.465	0.465	0.489	0.465	0.489	0.611	0.611	0.666	0.611	0.666	ns
LVC MOS12_M_2	0.512	0.512	0.555	0.512	0.555	0.708	0.708	0.727	0.708	0.727	0.916	0.916	0.945	0.916	0.945	ns
LVC MOS12_M_4	0.512	0.512	0.555	0.512	0.555	0.550	0.550	0.573	0.550	0.573	0.664	0.664	0.690	0.664	0.690	ns
LVC MOS12_M_6	0.512	0.512	0.555	0.512	0.555	0.527	0.527	0.554	0.527	0.554	0.622	0.622	0.652	0.622	0.652	ns
LVC MOS12_M_8	0.512	0.512	0.555	0.512	0.555	0.540	0.540	0.571	0.540	0.571	0.614	0.614	0.649	0.614	0.649	ns
LVC MOS12_S_2	0.512	0.512	0.555	0.512	0.555	0.767	0.767	0.803	0.767	0.803	0.990	0.990	1.024	0.990	1.024	ns
LVC MOS12_S_4	0.512	0.512	0.555	0.512	0.555	0.666	0.666	0.704	0.666	0.704	0.803	0.803	0.848	0.803	0.848	ns
LVC MOS12_S_6	0.512	0.512	0.555	0.512	0.555	0.657	0.657	0.695	0.657	0.695	0.732	0.732	0.774	0.732	0.774	ns
LVC MOS12_S_8	0.512	0.512	0.555	0.512	0.555	0.708	0.708	0.761	0.708	0.761	0.745	0.745	0.790	0.745	0.790	ns
LVC MOS15_F_12	0.414	0.414	0.445	0.414	0.445	0.500	0.500	0.522	0.500	0.522	0.647	0.647	0.682	0.647	0.682	ns
LVC MOS15_F_2	0.414	0.414	0.445	0.414	0.445	0.702	0.702	0.722	0.702	0.722	0.919	0.919	0.940	0.919	0.940	ns
LVC MOS15_F_4	0.414	0.414	0.445	0.414	0.445	0.579	0.579	0.601	0.579	0.601	0.755	0.755	0.781	0.755	0.781	ns
LVC MOS15_F_6	0.414	0.414	0.445	0.414	0.445	0.547	0.547	0.569	0.547	0.569	0.711	0.711	0.742	0.711	0.742	ns
LVC MOS15_F_8	0.414	0.414	0.445	0.414	0.445	0.518	0.518	0.538	0.518	0.538	0.686	0.686	0.703	0.686	0.703	ns
LVC MOS15_M_12	0.414	0.414	0.445	0.414	0.445	0.607	0.607	0.644	0.607	0.644	0.637	0.637	0.676	0.637	0.676	ns
LVC MOS15_M_2	0.414	0.414	0.445	0.414	0.445	0.741	0.741	0.770	0.741	0.770	0.938	0.938	0.962	0.938	0.962	ns
LVC MOS15_M_4	0.414	0.414	0.445	0.414	0.445	0.625	0.625	0.651	0.625	0.651	0.754	0.754	0.786	0.754	0.786	ns
LVC MOS15_M_6	0.414	0.414	0.445	0.414	0.445	0.576	0.576	0.604	0.576	0.604	0.674	0.674	0.710	0.674	0.710	ns
LVC MOS15_M_8	0.414	0.414	0.445	0.414	0.445	0.568	0.568	0.601	0.568	0.601	0.639	0.639	0.681	0.639	0.681	ns
LVC MOS15_S_12	0.414	0.414	0.445	0.414	0.445	0.788	0.788	0.855	0.788	0.855	0.695	0.695	0.733	0.695	0.733	ns
LVC MOS15_S_2	0.414	0.414	0.445	0.414	0.445	0.829	0.829	0.864	0.829	0.864	1.039	1.039	1.079	1.039	1.079	ns
LVC MOS15_S_4	0.414	0.414	0.445	0.414	0.445	0.687	0.687	0.725	0.687	0.725	0.813	0.813	0.851	0.813	0.851	ns
LVC MOS15_S_6	0.414	0.414	0.445	0.414	0.445	0.671	0.671	0.710	0.671	0.710	0.726	0.726	0.763	0.726	0.763	ns
LVC MOS15_S_8	0.414	0.414	0.445	0.414	0.445	0.704	0.704	0.755	0.704	0.755	0.721	0.721	0.758	0.721	0.758	ns
LVC MOS18_F_12	0.418	0.418	0.445	0.418	0.445	0.573	0.573	0.601	0.573	0.601	0.731	0.731	0.769	0.731	0.769	ns
LVC MOS18_F_2	0.418	0.418	0.445	0.418	0.445	0.739	0.739	0.760	0.739	0.760	0.945	0.945	0.971	0.945	0.971	ns
LVC MOS18_F_4	0.418	0.418	0.445	0.418	0.445	0.609	0.609	0.630	0.609	0.630	0.778	0.778	0.802	0.778	0.802	ns
LVC MOS18_F_6	0.418	0.418	0.445	0.418	0.445	0.603	0.603	0.633	0.603	0.633	0.781	0.781	0.808	0.781	0.808	ns

Table 76: IOB High Performance (HP) Switching Characteristics (Cont'd)

I/O Standards	T _{INBUF_DELAY_PAD_I}					T _{OUTBUF_DELAY_O_PAD}					T _{OUTBUF_DELAY_TD_PAD}					Units
	0.90V		0.85V		0.72V	0.90V		0.85V		0.72V	0.90V		0.85V		0.72V	
	-3	-2	-1	-2	-1	-3	-2	-1	-2	-1	-3	-2	-1	-2	-1	
LVC MOS18_F_8	0.418	0.418	0.445	0.418	0.445	0.573	0.573	0.600	0.573	0.600	0.733	0.733	0.767	0.733	0.767	ns
LVC MOS18_M_12	0.418	0.418	0.445	0.418	0.445	0.640	0.640	0.678	0.640	0.678	0.670	0.670	0.709	0.670	0.709	ns
LVC MOS18_M_2	0.418	0.418	0.445	0.418	0.445	0.798	0.798	0.822	0.798	0.822	0.991	0.991	1.016	0.991	1.016	ns
LVC MOS18_M_4	0.418	0.418	0.445	0.418	0.445	0.664	0.664	0.693	0.664	0.693	0.798	0.798	0.836	0.798	0.836	ns
LVC MOS18_M_6	0.418	0.418	0.445	0.418	0.445	0.629	0.629	0.663	0.629	0.663	0.735	0.735	0.775	0.735	0.775	ns
LVC MOS18_M_8	0.418	0.418	0.445	0.418	0.445	0.626	0.626	0.661	0.626	0.661	0.705	0.705	0.746	0.705	0.746	ns
LVC MOS18_S_12	0.418	0.418	0.445	0.418	0.445	0.795	0.795	0.861	0.795	0.861	0.683	0.683	0.721	0.683	0.721	ns
LVC MOS18_S_2	0.418	0.418	0.445	0.418	0.445	0.862	0.862	0.897	0.862	0.897	1.076	1.076	1.098	1.076	1.098	ns
LVC MOS18_S_4	0.418	0.418	0.445	0.418	0.445	0.716	0.716	0.758	0.716	0.758	0.829	0.829	0.872	0.829	0.872	ns
LVC MOS18_S_6	0.418	0.418	0.445	0.418	0.445	0.682	0.682	0.724	0.682	0.724	0.724	0.724	0.762	0.724	0.762	ns
LVC MOS18_S_8	0.418	0.418	0.445	0.418	0.445	0.707	0.707	0.760	0.707	0.760	0.709	0.709	0.745	0.709	0.745	ns
LVDCI_15_F	0.425	0.425	0.462	0.425	0.462	0.426	0.426	0.443	0.426	0.443	0.548	0.548	0.581	0.548	0.581	ns
LVDCI_15_M	0.425	0.425	0.462	0.425	0.462	0.553	0.553	0.582	0.553	0.582	0.645	0.645	0.685	0.645	0.685	ns
LVDCI_15_S	0.425	0.425	0.462	0.425	0.462	0.749	0.749	0.803	0.749	0.803	0.821	0.821	0.890	0.821	0.890	ns
LVDCI_18_F	0.414	0.414	0.447	0.414	0.447	0.441	0.441	0.459	0.441	0.459	0.560	0.560	0.589	0.560	0.589	ns
LVDCI_18_M	0.414	0.414	0.447	0.414	0.447	0.554	0.554	0.585	0.554	0.585	0.644	0.644	0.683	0.644	0.683	ns
LVDCI_18_S	0.414	0.414	0.447	0.414	0.447	0.760	0.760	0.818	0.760	0.818	0.837	0.837	0.899	0.837	0.899	ns
LVDS	0.539	0.539	0.620	0.539	0.620	0.626	0.626	0.662	0.626	0.662	960.447	960.447	960.447	960.447	960.447	ns
MIPI_DPHY_DCI_HS	0.386	0.386	0.415	0.386	0.415	0.502	0.502	0.522	0.502	0.522	N/A	N/A	N/A	N/A	N/A	ns
MIPI_DPHY_DCI_LP	8.438	8.438	8.792	8.438	8.792	0.914	0.914	0.937	0.914	0.937	N/A	N/A	N/A	N/A	N/A	ns
POD10_DCI_F	0.408	0.408	0.430	0.408	0.430	0.425	0.425	0.444	0.425	0.444	0.555	0.555	0.584	0.555	0.584	ns
POD10_DCI_M	0.408	0.408	0.430	0.408	0.430	0.542	0.542	0.571	0.542	0.571	0.640	0.640	0.681	0.640	0.681	ns
POD10_DCI_S	0.408	0.408	0.430	0.408	0.430	0.754	0.754	0.815	0.754	0.815	0.850	0.850	0.917	0.850	0.917	ns
POD10_F	0.407	0.407	0.430	0.407	0.430	0.438	0.438	0.459	0.438	0.459	0.569	0.569	0.601	0.569	0.601	ns
POD10_M	0.407	0.407	0.430	0.407	0.430	0.538	0.538	0.568	0.538	0.568	0.630	0.630	0.667	0.630	0.667	ns
POD10_S	0.407	0.407	0.430	0.407	0.430	0.766	0.766	0.821	0.766	0.821	0.836	0.836	0.894	0.836	0.894	ns
POD12_DCI_F	0.409	0.409	0.431	0.409	0.431	0.425	0.425	0.443	0.425	0.443	0.558	0.558	0.586	0.558	0.586	ns
POD12_DCI_M	0.409	0.409	0.431	0.409	0.431	0.543	0.543	0.572	0.543	0.572	0.638	0.638	0.678	0.638	0.678	ns
POD12_DCI_S	0.409	0.409	0.431	0.409	0.431	0.772	0.772	0.822	0.772	0.822	0.862	0.862	0.929	0.862	0.929	ns
POD12_F	0.409	0.409	0.431	0.409	0.431	0.455	0.455	0.476	0.455	0.476	0.595	0.595	0.626	0.595	0.626	ns
POD12_M	0.409	0.409	0.431	0.409	0.431	0.551	0.551	0.582	0.551	0.582	0.641	0.641	0.679	0.641	0.679	ns
POD12_S	0.409	0.409	0.431	0.409	0.431	0.767	0.767	0.817	0.767	0.817	0.832	0.832	0.889	0.832	0.889	ns
SLVS_400_18	0.539	0.539	0.620	0.539	0.620	N/A	N/A	N/A	N/A	N/A	N/A	N/A	N/A	N/A	N/A	ns
SSTL12_DCI_F	0.381	0.381	0.399	0.381	0.399	0.425	0.425	0.443	0.425	0.443	0.558	0.558	0.586	0.558	0.586	ns
SSTL12_DCI_M	0.381	0.381	0.399	0.381	0.399	0.557	0.557	0.587	0.557	0.587	0.654	0.654	0.694	0.654	0.694	ns
SSTL12_DCI_S	0.381	0.381	0.399	0.381	0.399	0.754	0.754	0.803	0.754	0.803	0.842	0.842	0.908	0.842	0.908	ns
SSTL12_F	0.403	0.403	0.403	0.403	0.403	0.412	0.412	0.430	0.412	0.430	0.538	0.538	0.566	0.538	0.566	ns
SSTL12_M	0.403	0.403	0.403	0.403	0.403	0.553	0.553	0.584	0.553	0.584	0.641	0.641	0.676	0.641	0.676	ns
SSTL12_S	0.403	0.403	0.403	0.403	0.403	0.758	0.758	0.808	0.758	0.808	0.823	0.823	0.879	0.823	0.879	ns
SSTL135_DCI_F	0.366	0.366	0.399	0.366	0.399	0.411	0.411	0.428	0.411	0.428	0.537	0.537	0.565	0.537	0.565	ns
SSTL135_DCI_M	0.366	0.366	0.399	0.366	0.399	0.551	0.551	0.582	0.551	0.582	0.645	0.645	0.685	0.645	0.685	ns

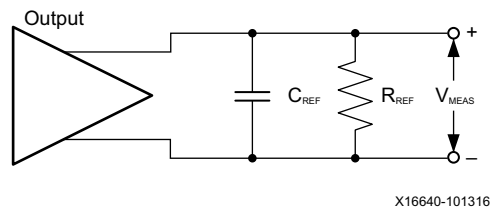
Output Delay Measurement Methodology

Output delays are measured with short output traces. Standard termination was used for all testing. The propagation delay of the trace is characterized separately and subtracted from the final measurement, and is therefore not included in the generalized test setups shown in [Figure 1](#) and [Figure 2](#).



X16654-101316

Figure 1: Single-Ended Test Setup



X16640-101316

Figure 2: Differential Test Setup

Parameters V_{REF} , R_{REF} , C_{REF} , and V_{MEAS} fully describe the test conditions for each I/O standard. The most accurate prediction of propagation delay in any given application can be obtained through IBIS simulation, using this method:

1. Simulate the output driver of choice into the generalized test setup using values from [Table 79](#).
2. Record the time to V_{MEAS} .
3. Simulate the output driver of choice into the actual PCB trace and load using the appropriate IBIS model or capacitance value to represent the load.
4. Record the time to V_{MEAS} .
5. Compare the results of [step 2](#) and [step 4](#). The increase or decrease in delay yields the actual propagation delay of the PCB trace.

Device Pin-to-Pin Input Parameter Guidelines

The pin-to-pin numbers in [Table 90](#) and [Table 91](#) are based on the clock root placement in the center of the device. The actual pin-to-pin values will vary if the root placement selected is different. Consult the Vivado Design Suite timing report for the actual pin-to-pin values.

Table 90: Global Clock Input Setup and Hold With 3.3V HD I/O without MMCM

Symbol	Description	Device	Speed Grade and V _{CCINT} Operating Voltages					Units	
			0.90V	0.85V		0.72V			
			-3	-2	-1	-2	-1		
Input Setup and Hold Time Relative to Global Clock Input Signal using SSTL15 Standard. (1)(2)(3)									
T _{PSFD_ZU2}	Global clock input and input flip-flop (or latch) without MMCM.	Setup	XCZU2	N/A	2.27	2.37	2.55	2.64	ns
T _{PHFD_ZU2}		Hold			-0.36	-0.36	-0.14	-0.14	ns
T _{PSFD_ZU3}		Setup	XCZU3	N/A	2.27	2.37	2.55	2.64	ns
T _{PHFD_ZU3}		Hold			-0.36	-0.36	-0.14	-0.14	ns
T _{PSFD_ZU4}		Setup	XCZU4	1.28	2.01	2.07	2.59	2.59	ns
T _{PHFD_ZU4}		Hold			-0.28	-0.28	-0.09	-0.09	ns
T _{PSFD_ZU5}		Setup	XCZU5	1.28	2.01	2.07	2.59	2.59	ns
T _{PHFD_ZU5}		Hold			-0.28	-0.28	-0.09	-0.09	ns
T _{PSFD_ZU6}		Setup	XCZU6	0.96	1.79	1.86	1.93	2.02	ns
T _{PHFD_ZU6}		Hold			-0.05	-0.05	0.27	0.42	ns
T _{PSFD_ZU7}		Setup	XCZU7	1.43	2.32	2.42	2.60	2.69	ns
T _{PHFD_ZU7}		Hold			-0.40	-0.40	-0.21	-0.21	ns
T _{PSFD_ZU9}		Setup	XCZU9	0.96	1.79	1.86	1.93	2.02	ns
T _{PHFD_ZU9}		Hold			-0.05	-0.05	0.27	0.42	ns
T _{PSFD_ZU11}		Setup	XCZU11	1.28	2.01	2.07	2.59	2.59	ns
T _{PHFD_ZU11}		Hold			-0.29	-0.29	-0.09	0.19	ns
T _{PSFD_ZU15}		Setup	XCZU15	0.96	1.79	1.85	1.92	2.01	ns
T _{PHFD_ZU15}		Hold			-0.04	-0.04	0.27	0.43	ns
T _{PSFD_ZU17}		Setup	XCZU17	1.41	2.29	2.38	2.57	2.65	ns
T _{PHFD_ZU17}		Hold			-0.38	-0.38	-0.19	-0.19	ns
T _{PSFD_ZU19}	Setup	XCZU19	1.41	2.29	2.38	2.57	2.65	ns	
T _{PHFD_ZU19}	Hold			-0.38	-0.38	-0.19	-0.19	ns	

Notes:

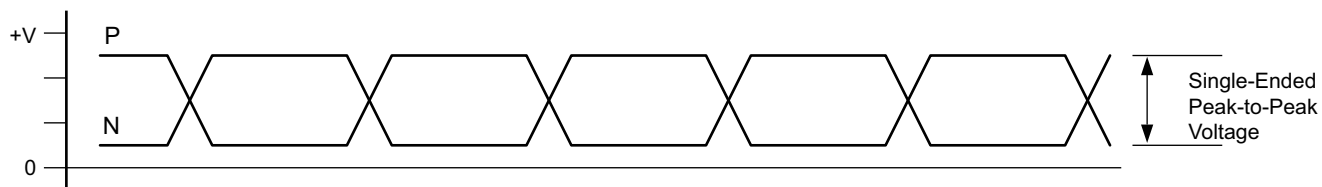
1. Setup and hold times are measured over worst case conditions (process, voltage, temperature). Setup time is measured relative to the global clock input signal using the slowest process, slowest temperature, and slowest voltage. Hold time is measured relative to the global clock input signal using the fastest process, fastest temperature, and fastest voltage.
2. This table lists representative values where one global clock input drives one vertical clock line in each accessible column, and where all accessible I/O and CLB flip-flops are clocked by the global clock net.
3. Use IBIS to determine any duty-cycle distortion incurred using various standards.

Table 91: Global Clock Input Setup and Hold With MMCM

Symbol	Description	Device	Speed Grade and V _{CCIINT} Operating Voltages					Units	
			0.90V	0.85V		0.72V			
			-3	-2	-1	-2	-1		
Input Setup and Hold Time Relative to Global Clock Input Signal using SSTL15 Standard. (1)(2)(3)									
T _{PSMMCMCC_ZU2}	Global clock input and input flip-flop (or latch) with MMCM.	Setup	XCZU2	N/A	1.83	1.96	2.29	2.48	ns
T _{PHMMCMCC_ZU2}		Hold			-0.19	-0.19	0.13	0.13	ns
T _{PSMMCMCC_ZU3}		Setup	XCZU3	N/A	1.83	1.96	2.29	2.48	ns
T _{PHMMCMCC_ZU3}		Hold			-0.19	-0.19	0.13	0.13	ns
T _{PSMMCMCC_ZU4}		Setup	XCZU4	1.96	1.96	2.10	2.49	2.59	ns
T _{PHMMCMCC_ZU4}		Hold			-0.12	-0.12	-0.12	0.27	0.48
T _{PSMMCMCC_ZU5}		Setup	XCZU5	1.96	1.96	2.10	2.49	2.59	ns
T _{PHMMCMCC_ZU5}		Hold			-0.12	-0.12	-0.12	0.27	0.48
T _{PSMMCMCC_ZU6}		Setup	XCZU6	1.97	2.00	2.12	2.26	2.44	ns
T _{PHMMCMCC_ZU6}		Hold			-0.11	-0.11	-0.11	0.16	0.18
T _{PSMMCMCC_ZU7}		Setup	XCZU7	1.91	1.91	2.02	2.45	2.70	ns
T _{PHMMCMCC_ZU7}		Hold			-0.14	-0.14	-0.14	0.37	0.38
T _{PSMMCMCC_ZU9}		Setup	XCZU9	1.97	2.00	2.12	2.26	2.44	ns
T _{PHMMCMCC_ZU9}		Hold			-0.11	-0.11	-0.11	0.16	0.18
T _{PSMMCMCC_ZU11}		Setup	XCZU11	2.08	2.08	2.23	2.59	2.75	ns
T _{PHMMCMCC_ZU11}		Hold			-0.08	-0.08	0.04	0.35	0.74
T _{PSMMCMCC_ZU15}		Setup	XCZU15	1.96	1.99	2.12	2.26	2.44	ns
T _{PHMMCMCC_ZU15}		Hold			-0.10	-0.10	-0.10	0.17	0.19
T _{PSMMCMCC_ZU17}		Setup	XCZU17	1.89	1.89	2.03	2.36	2.55	ns
T _{PHMMCMCC_ZU17}		Hold			-0.16	-0.16	-0.16	0.31	0.34
T _{PSMMCMCC_ZU19}	Setup	XCZU19	1.89	1.89	2.03	2.36	2.55	ns	
T _{PHMMCMCC_ZU19}	Hold			-0.16	-0.16	-0.16	0.31	0.34	ns

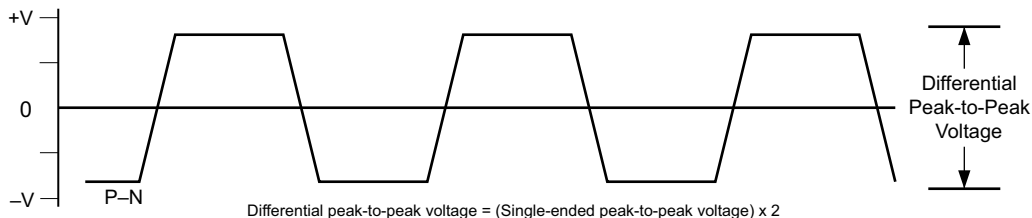
Notes:

1. Setup and hold times are measured over worst case conditions (process, voltage, temperature). Setup time is measured relative to the global clock input signal using the slowest process, slowest temperature, and slowest voltage. Hold time is measured relative to the global clock input signal using the fastest process, fastest temperature, and fastest voltage.
2. This table lists representative values where one global clock input drives one vertical clock line in each accessible column, and where all accessible I/O and CLB flip-flops are clocked by the global clock net.
3. Use IBIS to determine any duty-cycle distortion incurred using various standards.



X16653-101316

Figure 3: Single-Ended Peak-to-Peak Voltage



X16639-101316

Figure 4: Differential Peak-to-Peak Voltage

Table 95 and Table 96 summarize the DC specifications of the GTH transceivers input and output clocks in Zynq UltraScale+ MPSoC. Consult the *UltraScale Architecture GTH Transceiver User Guide (UG576)* for further details.

Table 95: GTH Transceiver Clock Input Level Specification

Symbol	DC Parameter	Min	Typ	Max	Units
V_{IDIFF}	Differential peak-to-peak input voltage.	250	–	2000	mV
R_{IN}	Differential input resistance.	–	100	–	Ω
C_{EXT}	Required external AC coupling capacitor.	–	10	–	nF

Table 96: GTH Transceiver Clock Output Level Specification

Symbol	Description	Conditions	Min	Typ	Max	Units
V_{OL}	Output Low voltage for P and N.	$R_T = 100\Omega$ across P and N signals	100	–	330	mV
V_{OH}	Output High voltage for P and N.	$R_T = 100\Omega$ across P and N signals	500	–	700	mV
V_{DDOUT}	Differential output voltage. (P–N), P = High (N–P), N = High	$R_T = 100\Omega$ across P and N signals	300	–	430	mV
V_{CMOUT}	Common mode voltage.	$R_T = 100\Omega$ across P and N signals	300	–	500	mV

GTH Transceiver Switching Characteristics

Consult the *UltraScale Architecture GTH Transceiver User Guide (UG576)* for further information.

Table 97: GTH Transceiver Performance

Symbol	Description	Output Divider	Speed Grade and V _{CCINT} Operating Voltages										Units
			0.90V		0.85V		0.72V		0.72V		0.72V		
			-3	-2	-1	-2	-1	-2	-1	-2	-1	-2	
F _{GTHMAX}	GTH maximum line rate.		16.375 ⁽¹⁾		16.375 ⁽¹⁾		12.5		12.5		10.3125		Gb/s
F _{GTHMIN}	GTH minimum line rate.		0.5		0.5		0.5		0.5		0.5		Gb/s
			Min	Max	Min	Max	Min	Max	Min	Max	Min	Max	
F _{GTHCRANGE}	CPLL line rate range ⁽²⁾ .	1	4	12.5	4	12.5	4	8.5	4	8.5	4	8.5	Gb/s
		2	2	6.25	2	6.25	2	4.25	2	4.25	2	4.25	Gb/s
		4	1	3.125	1	3.125	1	2.125	1	2.125	1	2.125	Gb/s
		8	0.5	1.5625	0.5	1.5625	0.5	1.0625	0.5	1.0625	0.5	1.0625	Gb/s
		16	N/A										Gb/s
			Min	Max	Min	Max	Min	Max	Min	Max	Min	Max	
F _{GTHQRANGE1}	QPLL0 line rate range ⁽³⁾ .	1	9.8	16.375	9.8	16.375	9.8	12.5	9.8	12.5	9.8	10.3125	Gb/s
		2	4.9	8.1875	4.9	8.1875	4.9	8.15	4.9	8.1875	4.9	8.15	Gb/s
		4	2.45	4.0938	2.45	4.0938	2.45	4.075	2.45	4.0938	2.45	4.075	Gb/s
		8	1.225	2.0469	1.225	2.0469	1.225	2.0375	1.225	2.0469	1.225	2.0375	Gb/s
		16	0.6125	1.0234	0.6125	1.0234	0.6125	1.0188	0.6125	1.0234	0.6125	1.0188	Gb/s
			Min	Max	Min	Max	Min	Max	Min	Max	Min	Max	
F _{GTHQRANGE2}	QPLL1 line rate range ⁽⁴⁾ .	1	8.0	13.0	8.0	13.0	8.0	12.5	8.0	12.5	8.0	10.3125	Gb/s
		2	4.0	6.5	4.0	6.5	4.0	6.5	4.0	6.5	4.0	6.5	Gb/s
		4	2.0	3.25	2.0	3.25	2.0	3.25	2.0	3.25	2.0	3.25	Gb/s
		8	1.0	1.625	1.0	1.625	1.0	1.625	1.0	1.625	1.0	1.625	Gb/s
		16	0.5	0.8125	0.5	0.8125	0.5	0.8125	0.5	0.8125	0.5	0.8125	Gb/s
			Min	Max	Min	Max	Min	Max	Min	Max	Min	Max	
F _{CPLLRANGE}	CPLL frequency range.		2	6.25	2	6.25	2	4.25	2	4.25	2	4.25	GHz
F _{QPLLORANGE}	QPLL0 frequency range.		9.8	16.375	9.8	16.375	9.8	16.375	9.8	16.375	9.8	16.375	GHz
F _{QPLL1RANGE}	QPLL1 frequency range.		8	13	8	13	8	13	8	13	8	13	GHz

Notes:

1. GTH transceiver line rates in the SFVC784 package support data rates up to 12.5 Gb/s.
2. The values listed are the rounded results of the calculated equation (2 x CPLL_Frequency)/Output_Divider.
3. The values listed are the rounded results of the calculated equation (QPLL0_Frequency)/Output_Divider.
4. The values listed are the rounded results of the calculated equation (QPLL1_Frequency)/Output_Divider.

Table 98: GTH Transceiver Dynamic Reconfiguration Port (DRP) Switching Characteristics

Symbol	Description	All Speed Grades	Units
F _{GTHDRPCLK}	GTHDRPCLK maximum frequency.	250	MHz

Table 103: GTH Transceiver Transmitter Switching Characteristics (Cont'd)

Symbol	Description	Condition	Min	Typ	Max	Units
T _{J2.5}	Total jitter ⁽³⁾⁽⁴⁾	2.5 Gb/s ⁽⁶⁾	–	–	0.20	UI
D _{J2.5}	Deterministic jitter ⁽³⁾⁽⁴⁾		–	–	0.10	UI
T _{J1.25}	Total jitter ⁽³⁾⁽⁴⁾	1.25 Gb/s ⁽⁷⁾	–	–	0.15	UI
D _{J1.25}	Deterministic jitter ⁽³⁾⁽⁴⁾		–	–	0.06	UI
T _{J500}	Total jitter ⁽³⁾⁽⁴⁾	500 Mb/s ⁽⁸⁾	–	–	0.10	UI
D _{J500}	Deterministic jitter ⁽³⁾⁽⁴⁾		–	–	0.03	UI

Notes:

- Using same REFCLK input with TX phase alignment enabled for up to four consecutive transmitters (one fully populated GTH Quad) at the maximum line rate.
- Using QPLL_FBDIV = 40, 20-bit internal data width. These values are NOT intended for protocol specific compliance determinations.
- Using CPLL_FBDIV = 2, 20-bit internal data width. These values are NOT intended for protocol specific compliance determinations.
- All jitter values are based on a bit-error ratio of 10⁻¹².
- CPLL frequency at 3.2 GHz and TXOUT_DIV = 2.
- CPLL frequency at 2.5 GHz and TXOUT_DIV = 2.
- CPLL frequency at 2.5 GHz and TXOUT_DIV = 4.
- CPLL frequency at 2.0 GHz and TXOUT_DIV = 8.

Table 104: GTH Transceiver Receiver Switching Characteristics

Symbol	Description	Condition	Min	Typ	Max	Units
F _{GTHRX}	Serial data rate		0.500	–	F _{GTHMAX}	Gb/s
R _{XSS}	Receiver spread-spectrum tracking ⁽¹⁾	Modulated at 33 kHz	–5000	–	0	ppm
R _{XRL}	Run length (CID)		–	–	256	UI
R _{XPPMTOL}	Data/REFCLK PPM offset tolerance	Bit rates ≤ 6.6 Gb/s	–1250	–	1250	ppm
		Bit rates > 6.6 Gb/s and ≤ 8.0 Gb/s	–700	–	700	ppm
		Bit rates > 8.0 Gb/s	–200	–	200	ppm
SJ Jitter Tolerance⁽²⁾						
J _{T_SJ16.375}	Sinusoidal jitter (QPLL) ⁽³⁾	16.375 Gb/s	0.30	–	–	UI
J _{T_SJ15.0}	Sinusoidal jitter (QPLL) ⁽³⁾	15.0 Gb/s	0.30	–	–	UI
J _{T_SJ14.1}	Sinusoidal jitter (QPLL) ⁽³⁾	14.1 Gb/s	0.30	–	–	UI
J _{T_SJ13.1}	Sinusoidal jitter (QPLL) ⁽³⁾	13.1 Gb/s	0.30	–	–	UI
J _{T_SJ12.5}	Sinusoidal jitter (QPLL) ⁽³⁾	12.5 Gb/s	0.30	–	–	UI
J _{T_SJ11.3}	Sinusoidal jitter (QPLL) ⁽³⁾	11.3 Gb/s	0.30	–	–	UI
J _{T_SJ10.32_QPLL}	Sinusoidal jitter (QPLL) ⁽³⁾	10.32 Gb/s	0.30	–	–	UI
J _{T_SJ10.32_CPLL}	Sinusoidal jitter (CPLL) ⁽³⁾	10.32 Gb/s	0.30	–	–	UI
J _{T_SJ9.953_QPLL}	Sinusoidal jitter (QPLL) ⁽³⁾	9.953 Gb/s	0.30	–	–	UI
J _{T_SJ9.953_CPLL}	Sinusoidal jitter (CPLL) ⁽³⁾	9.953 Gb/s	0.30	–	–	UI
J _{T_SJ8.0}	Sinusoidal jitter (QPLL) ⁽³⁾	8.0 Gb/s	0.42	–	–	UI
J _{T_SJ6.6_CPLL}	Sinusoidal jitter (CPLL) ⁽³⁾	6.6 Gb/s	0.44	–	–	UI
J _{T_SJ5.0}	Sinusoidal jitter (CPLL) ⁽³⁾	5.0 Gb/s	0.44	–	–	UI
J _{T_SJ4.25}	Sinusoidal jitter (CPLL) ⁽³⁾	4.25 Gb/s	0.44	–	–	UI
J _{T_SJ3.2}	Sinusoidal jitter (CPLL) ⁽³⁾	3.2 Gb/s ⁽⁴⁾	0.45	–	–	UI

Table 114: GTY Transceiver User Clock Switching Characteristics⁽¹⁾ (Cont'd)

Symbol	Description	Data Width Conditions (Bit)		Speed Grade and V _{CCINT} Operating Voltages					Units
				0.90V		0.85V		0.72V	
		Internal Logic	Interconnect Logic	-3 ⁽²⁾	-2 ⁽²⁾⁽³⁾	-1 ⁽⁴⁾⁽⁵⁾	-2 ⁽³⁾	-1 ⁽⁵⁾	
F _{TXIN2}	TXUSRCLK2 ⁽⁶⁾ maximum frequency	16	16	511.719	511.719	390.625	390.625	322.266	MHz
		16	32	255.859	255.859	195.313	195.313	161.133	MHz
		32	32	511.719	511.719	390.625	390.625	322.266	MHz
		32	64	255.859	255.859	195.313	195.313	161.133	MHz
		64	64	511.719	440.781	402.832	402.832	195.313	MHz
		64	128	255.859	220.391	201.416	201.416	97.656	MHz
		20	20	409.375	409.375	312.500	312.500	257.813	MHz
		20	40	204.688	204.688	156.250	156.250	128.906	MHz
		40	40	409.375	409.375	312.500	350.000	257.813	MHz
		40	80	204.688	204.688	156.250	175.000	128.906	MHz
		80	80	409.375	352.625	322.266	352.625	156.250	MHz
80	160	204.688	176.313	161.133	176.313	78.125	MHz		
F _{RXIN2}	RXUSRCLK2 ⁽⁶⁾ maximum frequency	16	16	511.719	511.719	390.625	390.625	322.266	MHz
		16	32	255.859	255.859	195.313	195.313	161.133	MHz
		32	32	511.719	511.719	390.625	390.625	322.266	MHz
		32	64	255.859	255.859	195.313	195.313	161.133	MHz
		64	64	511.719	440.781	402.832	402.832	195.313	MHz
		64	128	255.859	220.391	201.416	201.416	97.656	MHz
		20	20	409.375	409.375	312.500	312.500	257.813	MHz
		20	40	204.688	204.688	156.250	156.250	128.906	MHz
		40	40	409.375	409.375	312.500	350.000	257.813	MHz
		40	80	204.688	204.688	156.250	175.000	128.906	MHz
		80	80	409.375	352.625	322.266	352.625	156.250	MHz
80	160	204.688	176.313	161.133	176.313	78.125	MHz		

Notes:

1. Clocking must be implemented as described in the *UltraScale Architecture GTY Transceiver User Guide* ([UG578](#)).
2. For speed grades -3E, -2E, and -2I, a 16-bit and 20-bit internal data path can only be used for line rates less than 8.1875 Gb/s.
3. For speed grade -2LE, a 16-bit and 20-bit internal data path can only be used for line rates less than 8.1875 Gb/s when V_{CCINT} = 0.85V or 6.25 Gb/s when V_{CCINT} = 0.72V.
4. For speed grades -1E and -1I, a 16-bit and 20-bit internal data path can only be used for line rates less than 6.25 Gb/s.
5. For speed grade -1LI, a 16-bit and 20-bit internal data path can only be used for line rates less than 6.25 Gb/s when V_{CCINT} = 0.85V or 5.15625 Gb/s when V_{CCINT} = 0.72V.
6. When the gearbox is used, these maximums refer to the XCLK. For more information, see the *Valid Data Width Combinations for TX Asynchronous Gearbox* table in the *UltraScale Architecture GTY Transceiver User Guide* ([UG578](#)).

Table 124: PL SYSMON Specifications (Cont'd)

Parameter	Symbol	Comments/Conditions	Min	Typ	Max	Units
On-Chip Sensor Accuracy						
Temperature sensor error ⁽¹⁾⁽³⁾		$T_j = -55^\circ\text{C}$ to 125°C (with external REF)	–	–	± 3	$^\circ\text{C}$
		$T_j = -55^\circ\text{C}$ to 110°C (with internal REF)	–	–	± 3.5	$^\circ\text{C}$
		$T_j = 110^\circ\text{C}$ to 125°C (with internal REF)	–	–	± 5	$^\circ\text{C}$
Supply sensor error ⁽⁴⁾		Supply voltages 0.72V to 1.2V, $T_j = -40^\circ\text{C}$ to 100°C (with external REF)	–	–	± 0.5	%
		Supply voltages 0.72V to 1.2V, $T_j = -55^\circ\text{C}$ to 125°C (with external REF)	–	–	± 1.0	%
		All other supply voltages, $T_j = -40^\circ\text{C}$ to 100°C (with external REF)	–	–	± 1.0	%
		All other supply voltages, $T_j = -55^\circ\text{C}$ to 125°C (with external REF)	–	–	± 2.0	%
		Supply voltages 0.72V to 1.2V, $T_j = -40^\circ\text{C}$ to 100°C (with internal REF)	–	–	± 1.0	%
		Supply voltages 0.72V to 1.2V, $T_j = -55^\circ\text{C}$ to 125°C (with internal REF)	–	–	± 2.0	%
		All other supply voltages, $T_j = -40^\circ\text{C}$ to 100°C (with internal REF)	–	–	± 1.5	%
		All other supply voltages, $T_j = -55^\circ\text{C}$ to 125°C (with internal REF)	–	–	± 2.5	%
Conversion Rate⁽⁵⁾						
Conversion time—continuous	t_{CONV}	Number of ADCCLK cycles	26	–	32	Cycles
Conversion time—event	t_{CONV}	Number of ADCCLK cycles	–	–	21	Cycles
DRP clock frequency	DCLK	DRP clock frequency	8	–	250	MHz
ADC clock frequency	ADCCLK	Derived from DCLK	1	–	5.2	MHz
DCLK duty cycle			40	–	60	%
SYSMON Reference⁽⁶⁾						
External reference	V_{REFP}	Externally supplied reference voltage	1.20	1.25	1.30	V
On-chip reference		Ground V_{REFP} pin to AGND, $T_j = -40^\circ\text{C}$ to 100°C	1.2375	1.25	1.2625	V
		Ground V_{REFP} pin to AGND, $T_j = -55^\circ\text{C}$ to 125°C	1.225	1.25	1.275	V

Notes:

- ADC offset errors are removed by enabling the ADC automatic offset calibration feature. The values are specified for when this feature is enabled.
- See the *Analog Input* section in the *UltraScale Architecture System Monitor User Guide* ([UG580](#)).
- When reading temperature values directly from the PMBus interface, the SYSMON has a $+4^\circ\text{C}$ offset due to the transfer function used by the PMBus application. For example, the external REF temperature sensor error's range of $\pm 3^\circ\text{C}$ becomes $+1^\circ\text{C}$ to $+7^\circ\text{C}$ when the temperature is read through the PMBus interface.
- Supply sensor offset and gain errors are removed by enabling the automatic offset and gain calibration feature. The values are specified for when this feature is enabled.
- See the *Adjusting the Acquisition Settling Time* section in the *UltraScale Architecture System Monitor User Guide* ([UG580](#)).
- Any variation in the reference voltage from the nominal $V_{\text{REFP}} = 1.25\text{V}$ and $V_{\text{REFN}} = 0\text{V}$ will result in a deviation from the ideal transfer function. This also impacts the accuracy of the internal sensor measurements (i.e., temperature and power supply). However, for external ratiometric type applications allowing reference to vary by $\pm 4\%$ is permitted.

Revision History

The following table shows the revision history for this document.

Date	Version	Description of Revisions
04/20/2017	1.3	<p>Updated Table 25, Table 26, and Table 27 to production release for the following devices/speed/temperature grades in Vivado Design Suite 2017.1.</p> <p>XCZU2CG and XCZU2EG: -2E, -2I, -1E, -1I XCZU3CG and XCZU3EG: -2E, -2I, -1E, -1I XCZU6CG and XCZU6EG: -2E, -2I, -1E, -1I XCZU9CG and XCZU9EG: -2E, -2I, -1E, -1I</p> <p>Added -2E ($V_{CCINT} = 0.85V$) speed grade where applicable. Removed -3E speed grade from the XCZU2 and XCZU3 devices in Table 26 and where applicable.</p> <p>In Table 1, updated values and Note 2. In Table 2, added or updated many of the notes. Updated Table 4 including the notes and added Note 6. Moved and updated Table 5. Added Table 8. Updated Table 9 and added Note 4. Updated Table 10 and added Note 1.</p> <p>Revised V_{ICM} in Table 23. Updated Table 30 and removed Note 1. Added Table 31 and Table 32. Updated Table 33 and removed F_{FTMCLK}. Updated $T_{REFPSCLK}$ in Table 34. Updated Note 1 in Table 37. Updated Table 39. Removed the <i>PS NAND Memory Controller Interface</i> section. Significant changes to Table 41 and removed Note 3. Significant changes to Table 42 and updated Note 1. Removed $F_{TSU_REF_CLK}$ from Table 44. Revised Table 45 and added Note 2 and Note 3. Revised Table 46 and added Note 2 and Note 3. Updated Table 48. Updated Table 51 and removed Note 2. Revised Table 52. Revised many of the tables in the <i>PS-GTR Transceiver</i> section. Revised Table 70 and Table 71. Removed Note 8 from Table 74.</p> <p>Updated the values in Table 75, Table 76, Table 77, Table 80, Table 87, Table 88, Table 89, Table 90, and Table 91 to the Vivado Design Suite 2017.1 speed specifications.</p> <p>Updated the values in Table 81 and Table 82. Added values to Table 92. Updated Table 93. Revised D_{VPP_OUT} in Table 94. Update the values in Table 96. Added Note 6 to Table 102. Updated Table 103 and Table 104. Revised D_{VPP_OUT} in Table 106. Updated the values in Table 108. In Table 109 updated the -1 (0.85V) specifications and removed Note 1. In Table 114 updated the -1 (0.85V) specifications and added Note 6. In Table 115 and Table 116, added the 28.21 jitter tolerance values and revised the notes. Revised the <i>Integrated Interface Block for Interlaken</i> and <i>Integrated Interface Block for 100G Ethernet MAC and PCS</i> sections. Revised the <i>Configuration Switching Characteristics</i> section. Removed the <i>eFUSE Programming Conditions</i> table and added the specifications to Table 2 and Table 3.</p>