

Welcome to E-XFL.COM

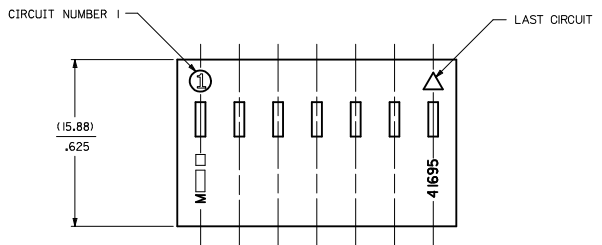
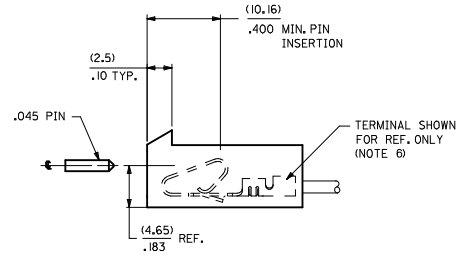
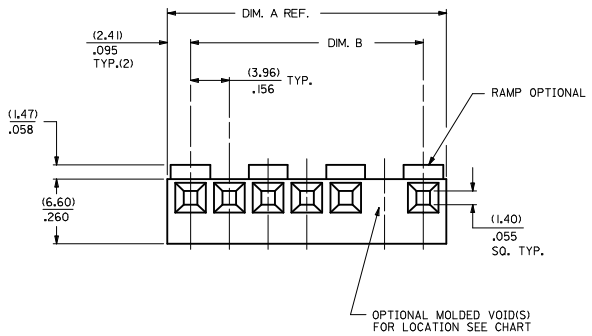
What is "[Embedded - Microcontrollers](#)"?

"[Embedded - Microcontrollers](#)" refer to small, integrated circuits designed to perform specific tasks within larger systems. These microcontrollers are essentially compact computers on a single chip, containing a processor core, memory, and programmable input/output peripherals. They are called "embedded" because they are embedded within electronic devices to control various functions, rather than serving as standalone computers. Microcontrollers are crucial in modern electronics, providing the intelligence and control needed for a wide range of applications.

Applications of "[Embedded - Microcontrollers](#)"

Details

Product Status	Active
Core Processor	ARM® Cortex®-M4
Core Size	32-Bit Single-Core
Speed	144MHz
Connectivity	CANbus, EBI/EMI, Ethernet, I ² C, LINbus, MMC/SD, SPI, UART/USART, USB OTG, USIC
Peripherals	DMA, I ² S, LED, POR, Touch-Sense, WDT
Number of I/O	75
Program Memory Size	2MB (2M x 8)
Program Memory Type	FLASH
EEPROM Size	-
RAM Size	352K x 8
Voltage - Supply (Vcc/Vdd)	3.13V ~ 3.63V
Data Converters	A/D 24x12b; D/A 2x12b
Oscillator Type	External
Operating Temperature	-40°C ~ 125°C (TA)
Mounting Type	Surface Mount
Package / Case	100-LQFP Exposed Pad
Supplier Device Package	PG-LQFP-100-25
Purchase URL	https://www.e-xfl.com/product-detail/infineon-technologies/xmc4800f100k2048aaxqma1



NO. OF CKTS SEE NOTE 10	DIM. A	DIM. B
1	NOT AVAILABLE	
2	(8.79) .348	(3.96±.05) .156±.002
3	(12.75) .502	(7.92±.08) .312±.003
4	(16.71) .658	(11.89±.08) .468±.003
5	(20.67) .814	(15.85±.08) .624±.003
6	(24.64) .970	(19.81±.10) .780±.004
7	(28.60) 1.126	(23.77±.10) .936±.004
8	(32.56) 1.282	(27.74±.10) 1.092±.004
9	(36.53) 1.438	(31.70±.10) 1.248±.004
10	(40.49) 1.594	(35.66±.15) 1.404±.006
11	(44.45) 1.750	(39.62±.15) 1.560±.006
12	(48.41) 1.906	(43.59±.15) 1.716±.006
13	(52.37) 2.062	(47.55±.15) 1.872±.006
14	(56.34) 2.218	(51.51±.18) 2.028±.007
15	(60.30) 2.374	(55.47±.18) 2.184±.007

- NOTES:
- MATERIAL: N - GLASS FILLED POLYESTER, UL94V-0, MOLDED NATURAL
G - UL94V-0 PA6 NYLON, IEC 60335-1, 4th EDITION GLOW WIRE CAPABLE.
COLOR: BLACK
 - FINISH: SEE TERMINAL DRAWINGS
 - PRODUCT SPECIFICATION: PS-08-50 AND PS-40-02
 - PACKAGING INFORMATION: SEE LEGEND
 - MATES WITH (3.96)/.156 CENTER HEADERS AND (1.14)/.045 SQUARE OR ROUND PINS
 - HOUSING ACCEPTS STANDARD TERMINAL NOS:
2478 (18-24 AWG) WITH (2.79)/.110 MAX. INSULATION DIA.
2578 (22-26 AWG) WITH (1.65)/.065 MAX. INSULATION DIA.
OR TRIFURCON TERMINAL NOS:
6838 (18-24 AWG) WITH (2.79)/.110 MAX. INSULATION DIA.
7258 (22-26 AWG) WITH (1.65)/.065 MAX. INSULATION DIA.
OR MARKK TERMINAL NO:
45570 (18-20 AWG) WITH (3.12)/.123 MAX. INSULATION DIA.
 - BOW (.006 MM/MM) / .006 IN/IN.
 - (0.13)/.005 MAX. FLASH ALLOWED ALONG DIMENSION B AND IN LOCKING WINDOW.
 - THIS PART CONFORMS TO CLASS B REQUIREMENTS OF COSMETIC SPECIFICATION PS-45499-002.
 - CIRCUIT SIZES 13 THROUGH 15 ARE NOT AVAILABLE IN G MATERIAL.

41695 - * - * N - ###

MATERIAL CODE
N-MOLDED NATURAL
G-GLOW WIRE

CODE	RAMP	POLARIZING RIBS	PACKAGING
A	NO	NO	BULK PER PK-41695-001
B	YES	NO	BULK PER PK-41695-001
D	YES	YES	BULK PER PK-41695-001
G	END RAMP ONLY	YES	BULK PER PK-41695-001

VOID CODE
BLANK-NO VOIDS
NO.-NO. CORRESPONDS TO CKT. NO. VOIDED
MULT. VOIDS-START WITH 51

NO. OF CKTS.
SEE NOTE 10

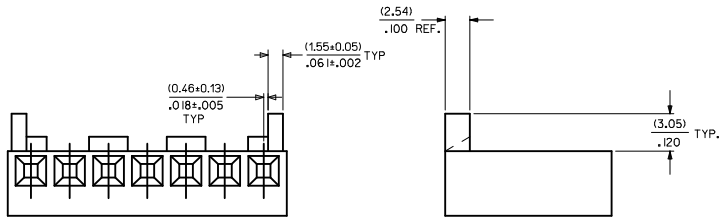
3	H
2	J
1	J

ADD 41695-0004 IEC NO. UCF2012-2243 DRAWN BY: DRANKHUPPER CHECKED BY: CHYDANDERSON APPROVED BY: APPR:FSMTH DATE: 2012/01/17 DATE: 2012/01/17	QUALITY SYMBOLS ▽=0 ▽=0 ▽=0	GENERAL TOLERANCES (UNLESS SPECIFIED) mm INCH 4 PLACES ±.01 ±.010 3 PLACES ±.025 ±.014 2 PLACES ±.036 ±.014 1 PLACE ANGULAR ±1/2°	DIMENSION STYLE MM/IN SCALE 4:1 DESIGN UNITS INCH THIRD ANGLE PROJECTION	DRAWN BY: SKOWRONSKI DATE: 04/05/18 CHECKED BY: PATEL DATE: 04/05/18 APPROVED BY: LENZ DATE: 04/05/18	TITLE (3.96)/.156 CENTERLINE CONNECTOR HOUSING FOR KK CRIMP TERMINALS MOLEX INCORPORATED	MATERIAL NO. SEE CHART DOCUMENT NO. SD-41695	SHEET NO. 1 OF 3

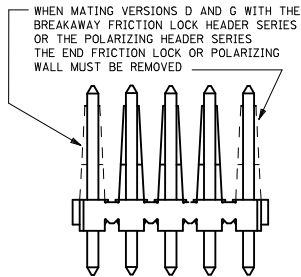
41695-N-AN-*			41695-N-BN-*		
PART NO.	ENG. NO.	VOIDS	PART NO.	ENG. NO.	VOIDS
	NOT AVAILABLE			NOT AVAILABLE	
09-50-8020	41695-N-A2		09-50-8021	41695-N-B2	
09-50-8030	41695-N-A3		09-50-8031	41695-N-B3	
09-50-8040	41695-N-A4		09-50-8041	41695-N-B4	
09-50-8050	41695-N-A5		09-50-8051	41695-N-B5	
09-50-8060	41695-N-A6		09-50-8061	41695-N-B6	
09-50-8070	41695-N-A7		09-50-8071	41695-N-B7	
09-50-8080	41695-N-A8		09-50-8081	41695-N-B8	
09-50-8090	41695-N-A9		09-50-8091	41695-N-B9	
09-50-8100	41695-N-A10		09-50-8101	41695-N-B10	
09-50-8110	41695-N-A11		09-50-8111	41695-N-B11	
09-50-8120	41695-N-A12		09-50-8121	41695-N-B12	
09-50-9085	41695-N-A8-2	2	09-50-8131	41695-N-B13	
41695-0001	41695-N-A6-3	3	09-50-8141	41695-N-B14	
41695-0002	41695-N-A5-4	4	09-50-8151	41695-N-B15	
			09-50-9030	41695-N-B3-2	2
			41695-0004	41695-N-B4-2	2
				41695-N-B5-2	2
				41695-N-B9-2	2
				41695-N-B11-2	2
			09-50-9121	41695-N-B12-2	2
				41695-N-B14-2	2
			09-50-9150	41695-N-B15-14	14
			09-50-9060	41695-N-B6-5	5
			09-50-9070	41695-N-B7-6	6
			09-50-9071	41695-N-B7-2	2
			09-50-9040	41695-N-B4-3	3
			09-50-9090	41695-N-B9-7	7
				41695-N-B14-13	13
			09-50-9136	41695-N-B13-5	5
			09-50-9137	41695-N-B13-8	8
			09-50-9050	41695-N-B5-51	2,4
			09-50-9061	41695-N-B6-3	3
			09-50-9080	41695-N-B8-2	2

OPTION CODE D

RAMP WITH POLARIZING PEGS (RIBS)



WHEN MATING WITH BREAKAWAY HEADERS THE FRICTION LOCK WALL MUST BE REMOVED

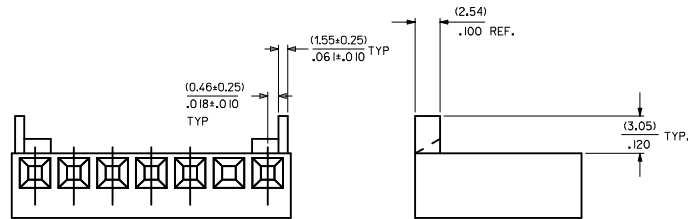


41695-G-AN-*			41695-G-BN-*		
PART NO.	ENG. NO.	VOIDS	PART NO.	ENG. NO.	VOIDS
41695-2032	41695-G-A02		41695-2000	41695-G-B02	
41695-2033	41695-G-A03		41695-2005	41695-G-B03	
41695-2034	41695-G-A04		41695-2002	41695-G-B04	
41695-2035	41695-G-A05		41695-2006	41695-G-B05	
41695-2036	41695-G-A06		41695-2007	41695-G-B06	
41695-2037	41695-G-A07		41695-2008	41695-G-B07	
41695-2038	41695-G-A08		41695-2009	41695-G-B08	
41695-2039	41695-G-A09		41695-2010	41695-G-B09	
41695-2040	41695-G-A10		41695-2011	41695-G-B10	
41695-2041	41695-G-A11		41695-2012	41695-G-B11	
41695-2042	41695-G-A12		41695-2013	41695-G-B12	

SEE SHEET 1 IEC NO. UCP2012-2243 DRAWN BY DRANKIPPER 2012/01/17 CHECKED BY CHYD BANDERSON 2012/01/17 APPROVED BY APPR:FSM/TH 2012/01/17	QUALITY SYMBOLS ▽=0 ▽=0 ▽=0	GENERAL TOLERANCES (UNLESS SPECIFIED) mm INCH 4 PLACES # --- # --- 3 PLACES # --- # --- 2 PLACES # --- # --- 1 PLACE # --- # --- ANGULAR ±1/2°	DIMENSION STYLE MM/IN DRAWN BY DATE SAMIEC 09/22/186 CHECKED BY DATE PATEL 09/22/186 APPROVED BY DATE LENZ 09/22/186	SCALE 4:1 DESIGN UNITS INCH THIRD ANGLE PROJECTION	TITLE (3.96)/.156 CENTERLINE CONNECTOR HOUSING FOR KK CRIMP TERMINAL MOLEX INCORPORATED MATERIAL NO. SD-41695 DOCUMENT NO. SD-41695	SHEET NO. 2 OF 3
	DRAFT WHERE APPLICABLE MUST REMAIN WITHIN DIMENSIONS					
	THIS DRAWING CONTAINS INFORMATION THAT IS PROPRIETARY TO MOLEX INCORPORATED AND SHOULD NOT BE USED WITHOUT WRITTEN PERMISSION					
	SIZE D					

OPTION CODE G

SAME AS OPTION D ONLY WITHOUT CENTER RAMPS



41695-N-DN-*

PART NO.	ENG. NO.	VOIDS
09-50-8023	41695-N-D2	
09-50-8033	41695-N-D3	
09-50-8043	41695-N-D4	
09-50-8053	41695-N-D5	
09-50-8063	41695-N-D6	
09-50-8073	41695-N-D7	
09-50-8083	41695-N-D8	
09-50-8093	41695-N-D9	
09-50-8103	41695-N-D10	
09-50-8113	41695-N-D11	
09-50-8123	41695-N-D12	
09-50-8133	41695-N-D13	
09-50-8143	41695-N-D14	
09-50-8153	41695-N-D15	
	41695-N-D15-12	12
09-50-9053	41695-N-D5-2	2
09-50-9094	41695-N-D9-3	3
09-50-9033	41695-N-D3-2	2
09-50-9043	41695-N-D4-2	2
09-50-9063	41695-N-D6-2	2
09-50-9073	41695-N-D7-2	2
09-50-9044	41695-N-D4-3	3
41695-0003	41695-N-D07-5	5

41695-N-GN-*

PART NO.	ENG. NO.	VOIDS
	NOT AVAILABLE	
	NOT AVAILABLE	
	NOT AVAILABLE	
	41695-N-G4	
09-50-8055	41695-N-G5	
	41695-N-G6	
	41695-N-G7	
	41695-N-G8	
	41695-N-G9	
	41695-N-G10	
	41695-N-G11	
	41695-N-G12	
	41695-N-G13	
09-50-8145	41695-N-G14	
	41695-N-G15	

41695-G-DN-*

PART NO.	ENG. NO.	VOIDS
41695-2001	41695-G-D02	
41695-2004	41695-G-D03	
41695-2021	41695-G-D04	
41695-2022	41695-G-D05	
41695-2023	41695-G-D06	
41695-2024	41695-G-D07	
41695-2025	41695-G-D08	
41695-2026	41695-G-D09	
41695-2027	41695-G-D10	
41695-2028	41695-G-D11	
41695-2029	41695-G-D12	

41695-G-GN-*

PART NO.	ENG. NO.	VOIDS
	NOT AVAILABLE	
	NOT AVAILABLE	
41695-2014	41695-G-G04	
41695-2015	41695-G-G05	
41695-2016	41695-G-G06	
41695-2017	41695-G-G07	
41695-2018	41695-G-G08	
41695-2019	41695-G-G09	
41695-2020	41695-G-G10	
41695-2030	41695-G-G11	
41695-2031	41695-G-G12	

SEE SHEET 1 IEC NO: UCP2011-2028 DRAWN BY: CHYD BANDERSON DATE: 2011/01/10 APPR: FSM TH DATE: 2011/01/31	QUALITY SYMBOLS ▽=0 ▽=0 ▽=0	GENERAL TOLERANCES (UNLESS SPECIFIED) mm INCH 4 PLACES ± --- ± --- 3 PLACES ± --- ± --- 2 PLACES ± --- ± --- 1 PLACE ± --- ± --- ANGULAR ±1/2°	DIMENSION STYLE MM/IN DRAWN BY: SAMIEC DATE: 09/01/87 CHECKED BY: PATEL DATE: 09/01/87 APPROVED BY: LENZ DATE: 09/01/87	SCALE: 4:1 DESIGN UNITS: INCH THIRD ANGLE PROJECTION	TITLE: (3.96)/.156 CENTERLINE CONNECTOR HOUSING FOR KK CRIMP TERMINAL MOLEX INCORPORATED	
	MATERIAL NO: SEE CHART	DOCUMENT NO: SD-41695	SHEET NO: 3 OF 3	THIS DRAWING CONTAINS INFORMATION THAT IS PROPRIETARY TO MOLEX INCORPORATED AND SHOULD NOT BE USED WITHOUT WRITTEN PERMISSION		