



Welcome to [E-XFL.COM](#)

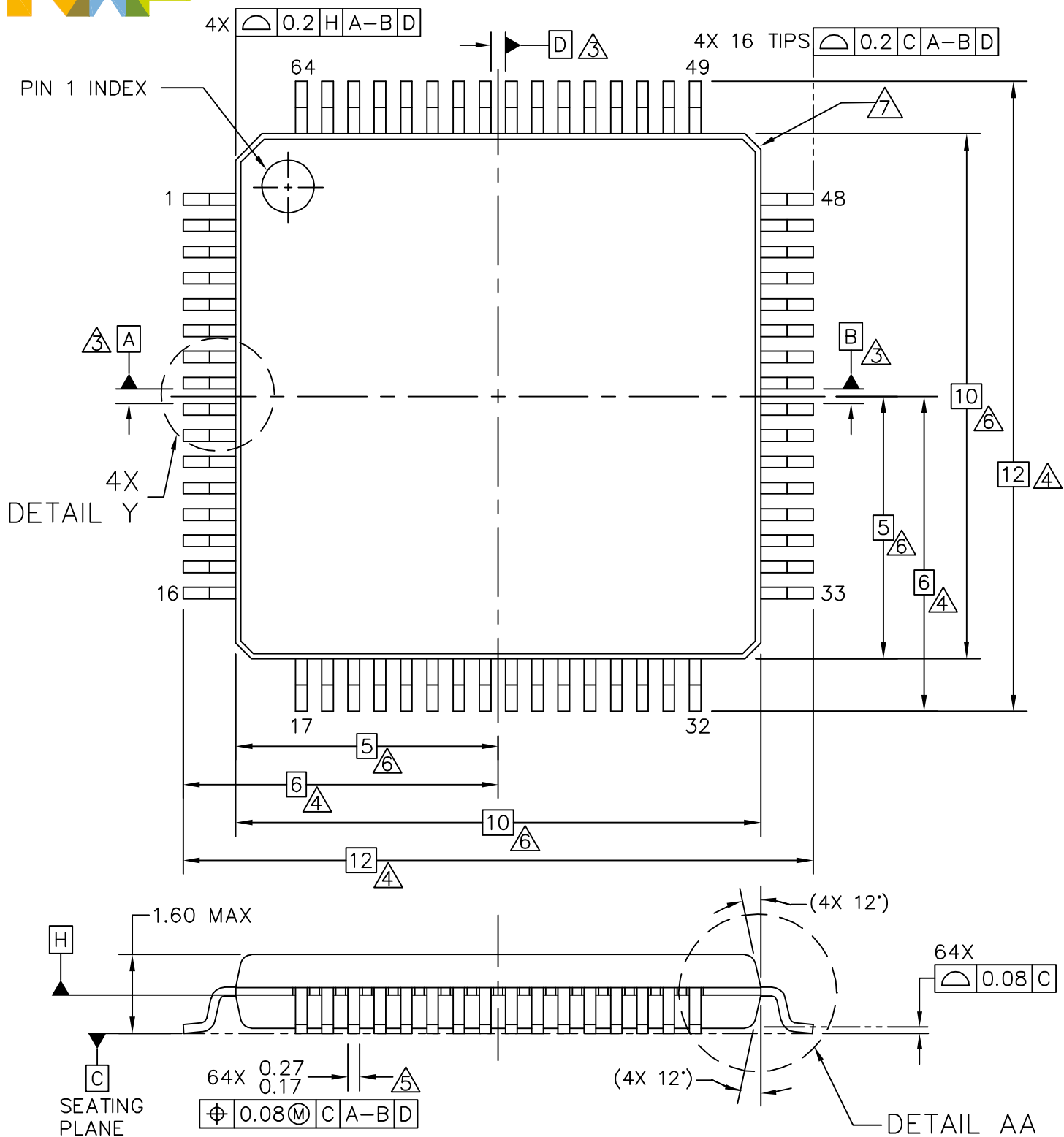
What is "[Embedded - Microcontrollers](#)"?

"[Embedded - Microcontrollers](#)" refer to small, integrated circuits designed to perform specific tasks within larger systems. These microcontrollers are essentially compact computers on a single chip, containing a processor core, memory, and programmable input/output peripherals. They are called "embedded" because they are embedded within electronic devices to control various functions, rather than serving as standalone computers. Microcontrollers are crucial in modern electronics, providing the intelligence and control needed for a wide range of applications.

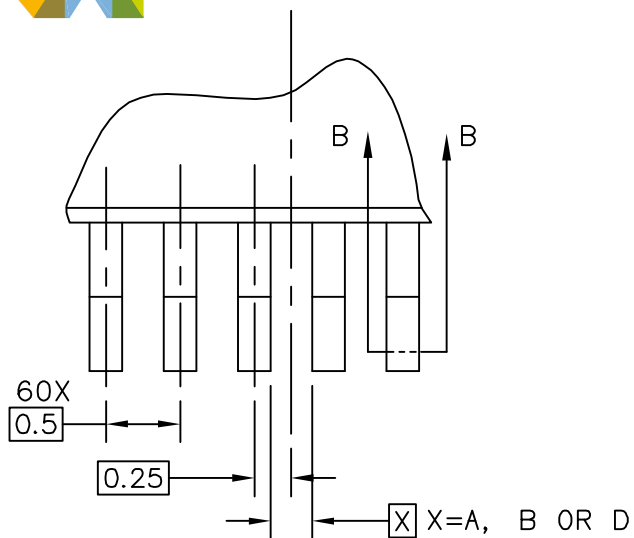
Applications of "[Embedded - Microcontrollers](#)"

Details

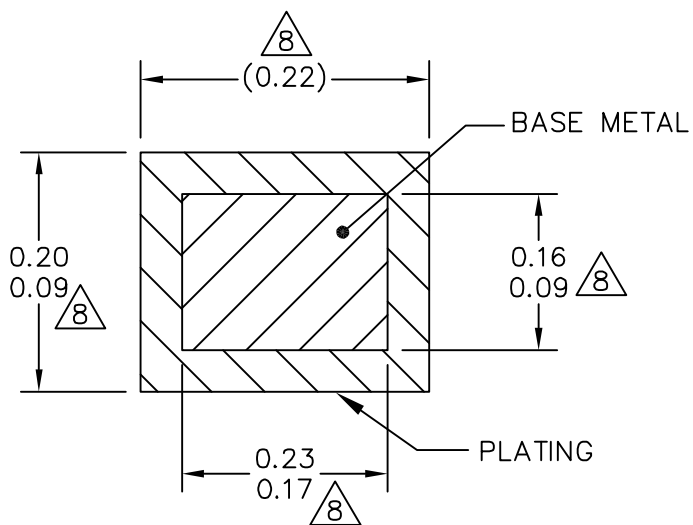
| | |
|----------------------------|---|
| Product Status | Active |
| Core Processor | ARM® Cortex®-M4 |
| Core Size | 32-Bit Single-Core |
| Speed | 72MHz |
| Connectivity | CANbus, I ² C, IrDA, SPI, UART/USART, USB, USB OTG |
| Peripherals | DMA, I ² S, LCD, LVD, POR, PWM, WDT |
| Number of I/O | 36 |
| Program Memory Size | 128KB (128K x 8) |
| Program Memory Type | FLASH |
| EEPROM Size | 2K x 8 |
| RAM Size | 32K x 8 |
| Voltage - Supply (Vcc/Vdd) | 1.71V ~ 3.6V |
| Data Converters | A/D 18x16b; D/A 1x12b |
| Oscillator Type | Internal |
| Operating Temperature | -40°C ~ 105°C (TA) |
| Mounting Type | Surface Mount |
| Package / Case | 64-LQFP |
| Supplier Device Package | 64-LQFP (10x10) |
| Purchase URL | https://www.e-xfl.com/product-detail/nxp-semiconductors/mk40dx128vlh7 |



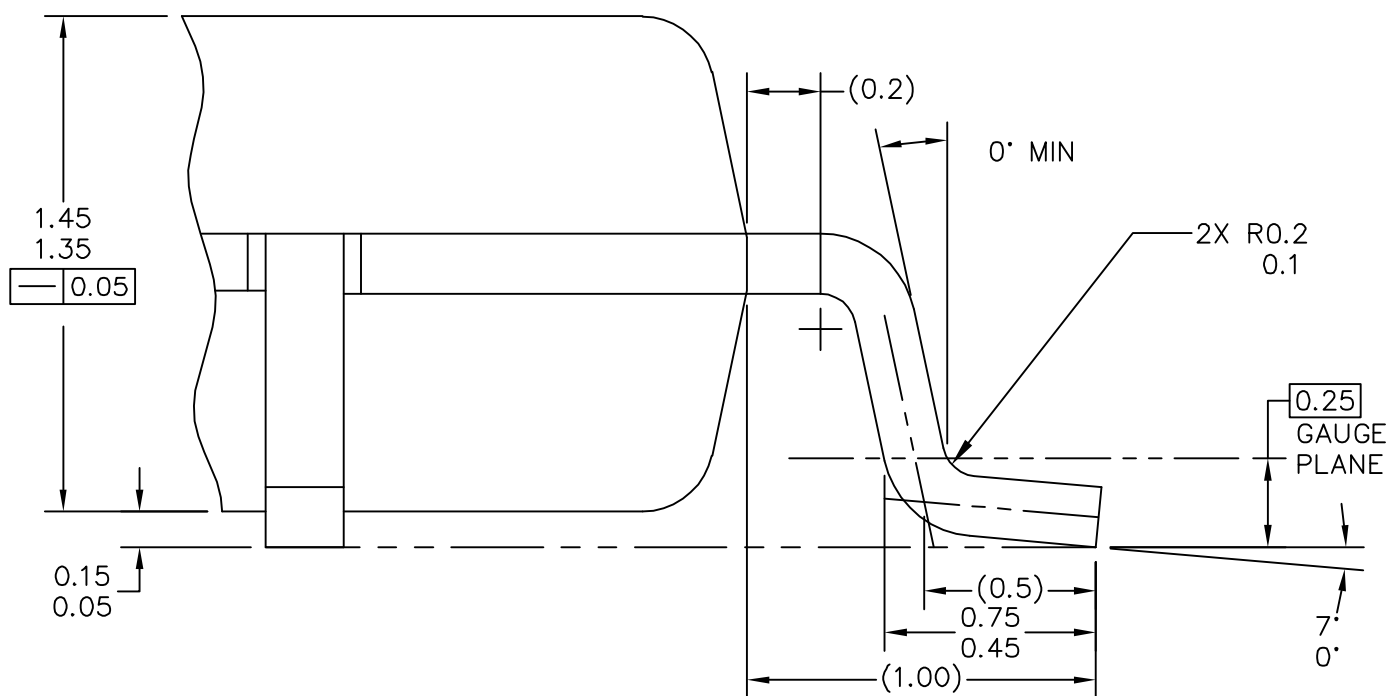
| | | |
|---|----------------------------|----------------------------|
| © NXP SEMICONDUCTORS N. V. ALL RIGHTS RESERVED | MECHANICAL OUTLINE | PRINT VERSION NOT TO SCALE |
| TITLE: LQFP, 10 X 10 X 1.4 PKG, 0.5 PITCH, 64LD | DOCUMENT NO: 98ASS23234W | REV: G |
| | STANDARD: JEDEC MS-026 BCD | |
| | SOT1699-1 | 25 JAN 2016 |



DETAIL Y



SECTION B-B



DETAIL AA

| | | |
|---|----------------------------|----------------------------|
| © NXP SEMICONDUCTORS N. V. ALL RIGHTS RESERVED | MECHANICAL OUTLINE | PRINT VERSION NOT TO SCALE |
| TITLE: LQFP, 10 X 10 X 1.4 PKG, 0.5 PITCH, 64LD | DOCUMENT NO: 98ASS23234W | REV: G |
| | STANDARD: JEDEC MS-026 BCD | |
| | SOT1699-1 | 25 JAN 2016 |



NOTES:

1. DIMENSIONS ARE IN MILLIMETERS.

2. DIMENSIONING AND TOLERANCING PER ASME Y14.5M-1994.

3. DATUMS A, B AND D TO BE DETERMINED AT DATUM PLANE H.

4. DIMENSIONS TO BE DETERMINED AT SEATING PLANE C.

5. THIS DIMENSION DOES NOT INCLUDE DAMBAR PROTRUSION. ALLOWABLE DAMBAR PROTRUSION SHALL NOT CAUSE THE LEAD WIDTH TO EXCEED THE UPPER LIMIT BY MORE THAN 0.08 MM AT MAXIMUM MATERIAL CONDITION. DAMBAR CANNOT BE LOCATED ON THE LOWER RADIUS OR THE FOOT. MINIMUM SPACE BETWEEN PROTRUSION AND ADJACENT LEAD SHALL NOT BE LESS THAN 0.07 MM.

6. THIS DIMENSION DOES NOT INCLUDE MOLD PROTRUSION. ALLOWABLE PROTRUSION IS 0.25 MM PER SIDE. THIS DIMENSION IS MAXIMUM PLASTIC BODY SIZE DIMENSION INCLUDING MOLD MISMATCH.

7. EXACT SHAPE OF EACH CORNER IS OPTIONAL.

8. THESE DIMENSIONS APPLY TO THE FLAT SECTION OF THE LEAD BETWEEN 0.1 MM AND 0.25 MM FROM THE LEAD TIP.

| | | |
|---|---------------------------------|----------------------------|
| © NXP SEMICONDUCTORS N. V. ALL RIGHTS RESERVED | MECHANICAL OUTLINE | PRINT VERSION NOT TO SCALE |
| TITLE: LQFP, 10 X 10 X 1.4 PKG, 0.5 PITCH, 64LD | DOCUMENT NO: 98ASS23234W REV: G | |
| | STANDARD: JEDEC MS-026 BCD | |
| | SOT1699-1 | 25 JAN 2016 |