



Welcome to [E-XFL.COM](https://www.e-xfl.com)

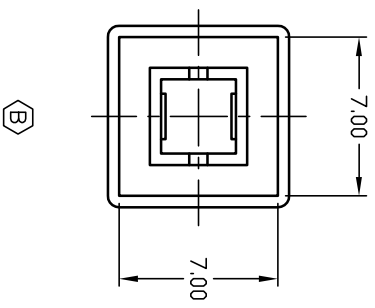
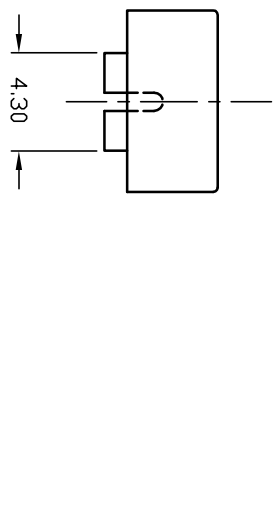
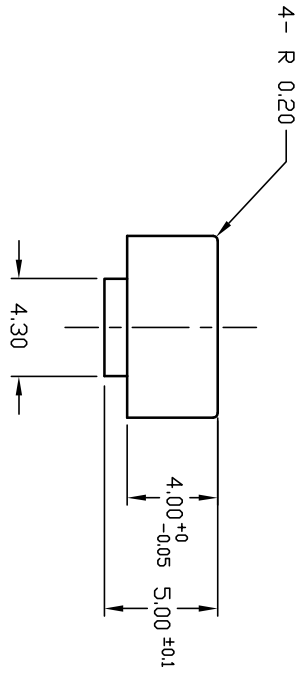
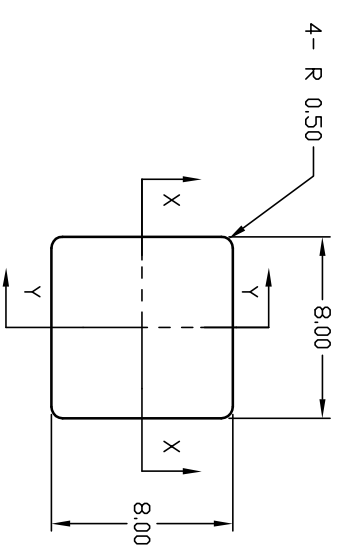
What is "[Embedded - Microcontrollers](#)"?

"[Embedded - Microcontrollers](#)" refer to small, integrated circuits designed to perform specific tasks within larger systems. These microcontrollers are essentially compact computers on a single chip, containing a processor core, memory, and programmable input/output peripherals. They are called "embedded" because they are embedded within electronic devices to control various functions, rather than serving as standalone computers. Microcontrollers are crucial in modern electronics, providing the intelligence and control needed for a wide range of applications.

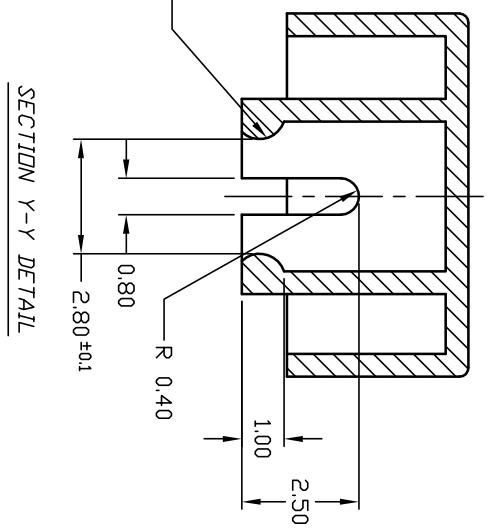
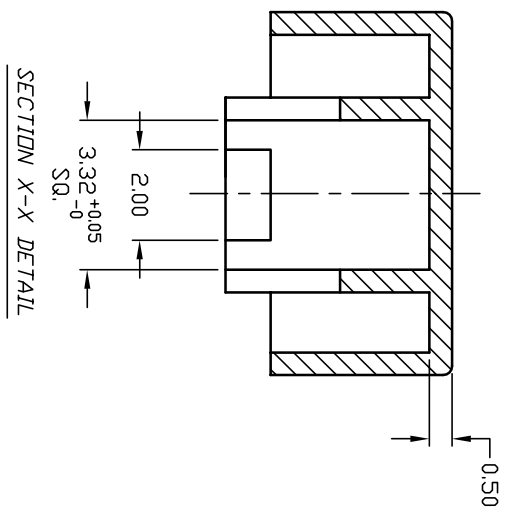
Applications of "[Embedded - Microcontrollers](#)"

Details

Product Status	Active
Core Processor	PIC
Core Size	8-Bit
Speed	32MHz
Connectivity	I ² C, SPI
Peripherals	Brown-out Detect/Reset, POR, PWM, WDT
Number of I/O	5
Program Memory Size	3.5KB (2K x 14)
Program Memory Type	FLASH
EEPROM Size	-
RAM Size	256 x 8
Voltage - Supply (Vcc/Vdd)	1.8V ~ 3.6V
Data Converters	A/D 4x10b
Oscillator Type	Internal
Operating Temperature	-40°C ~ 85°C (TA)
Mounting Type	Surface Mount
Package / Case	8-SOIC (0.154", 3.90mm Width)
Supplier Device Package	8-SOIC
Purchase URL	https://www.e-xfl.com/product-detail/microchip-technology/pic12lf1552-i-sn



- NOTES:
- 1. ALL DIMENSIONS IN MM
 - 2. GENERAL TOLERANCE: 0.0=±0.4
0.00=±0.25
 - 3. BUTTON COLOR: GRAY



E-SWITCH®			
TITLE			
6UGRY BUTTON			
SCALE			
3:1			
DATE			
9/5/03			
DR			
AR			
DWG			
P001071			
REV			
B			
B	14328	REMOVE NOTE, ADD TOLERANCE NOTE	9/17/04
A	13423	RELEASED FOR PRODUCTION	9/5/03
REV.	ECN No.	DESCRIPTION	DATE
THE INFORMATION CONTAINED IN THIS DOCUMENT IS PROPRIETARY TO E-SWITCH AND IS NOT TO BE COPIED OR TRANSFERRED			
CHKD			