

Welcome to [E-XFL.COM](https://www.e-xfl.com)

### What is "[Embedded - Microcontrollers](#)"?

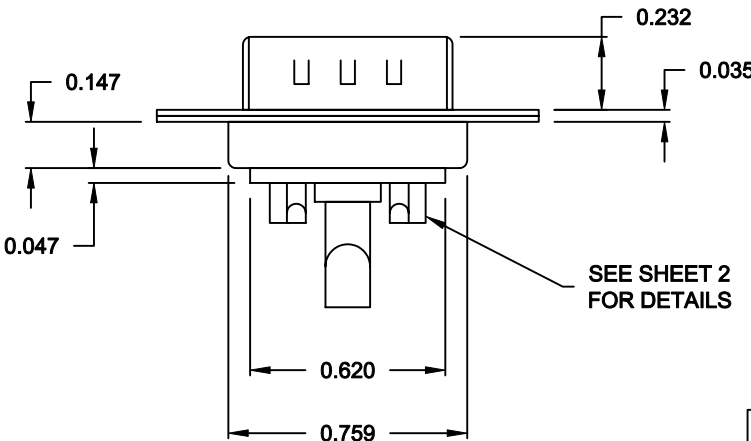
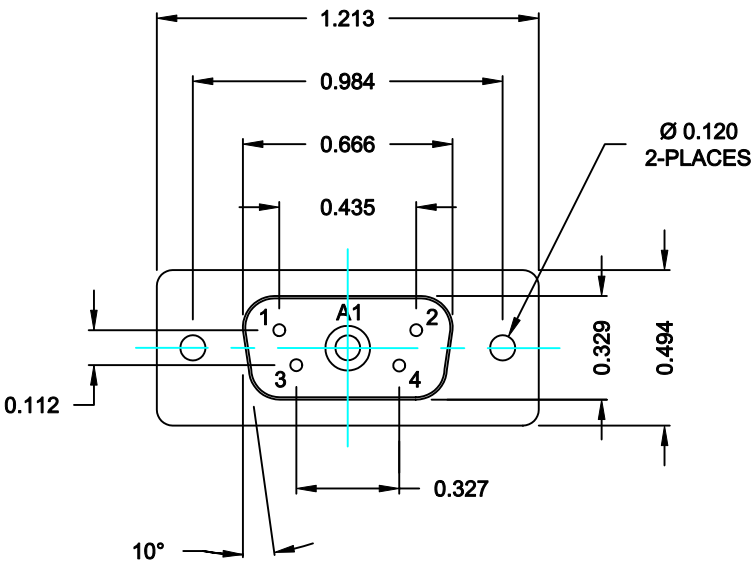
"[Embedded - Microcontrollers](#)" refer to small, integrated circuits designed to perform specific tasks within larger systems. These microcontrollers are essentially compact computers on a single chip, containing a processor core, memory, and programmable input/output peripherals. They are called "embedded" because they are embedded within electronic devices to control various functions, rather than serving as standalone computers. Microcontrollers are crucial in modern electronics, providing the intelligence and control needed for a wide range of applications.

### Applications of "[Embedded - Microcontrollers](#)"

#### Details

Product Status	Obsolete
Core Processor	8051
Core Size	8-Bit
Speed	48 MIPS
Connectivity	I <sup>2</sup> C, SPI, UART/USART, USB
Peripherals	POR, PWM, WDT
Number of I/O	15
Program Memory Size	16KB (16K x 8)
Program Memory Type	OTP
EEPROM Size	-
RAM Size	1.25K x 8
Voltage - Supply (Vcc/Vdd)	1.8V ~ 5.25V
Data Converters	-
Oscillator Type	Internal
Operating Temperature	-40°C ~ 85°C (TA)
Mounting Type	Surface Mount
Package / Case	28-VFQFN Exposed Pad
Supplier Device Package	28-QFN (5x5)
Purchase URL	<a href="https://www.e-xfl.com/product-detail/silicon-labs/c8051t326-gm">https://www.e-xfl.com/product-detail/silicon-labs/c8051t326-gm</a>

DESCRIPTION: POWER / SIGNAL - SOLDER CUP - MALE



SPECIFICATIONS:

**ELECTRICAL:**  
INSULATOR RESISTANCE: 5,000 MegOHMS Min.  
DIELECTRIC WITHSTANDING: 1,000VAC r.m.s.  
OPERATING TEMPERATURE: -55° C ~ +125° C  
CONTACT RESISTANCE: 30 MilliOHMS Max.  
POWER PINS: SEE PART No. BELOW  
SIGNAL PINS: 3 AMPS

**MECHANICAL:**  
CONTACT INSERTION FORCE: 4.5 Kg Max.  
CONTACT SEPARATOR FORCE: 0.3Kg Min.


**MATERIALS:**  
CONTACTS: BRASS  
INSULATOR: PBT UL94V-0 RATED,  
230°C PROCESS TEMP.  
STEEL

**SHELL:**  
**FINISH:**  
SHELL: NICKEL

6805W1103L YY1

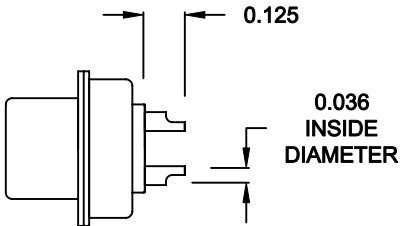
20 = 20 AMPS  
40 = 40 AMPS

RoHS COMPLIANT

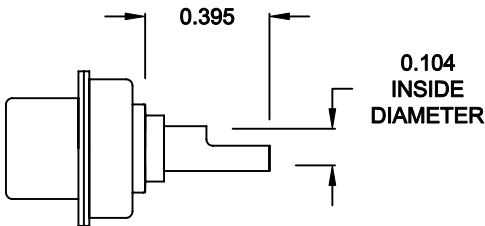
	THESE DRAWINGS AND SPECIFICATIONS ARE THE PROPERTY OF NorComp AND SHALL NOT BE REPRODUCED, COPIED OR USED AS THE BASIS FOR THE MANUFACTURE OF SALE OF APPARATUS WITHOUT WRITTEN PERMISSION.	DRAWN: <b>C. SMITH</b>		DATE: <b>09-11-06</b>	
		CHECKED: <b>X</b>		DATE: <b>X</b>	
<b>NorComp</b>	SCALE: <b>N.T.S.</b>		SHEET <b>1</b>		OF <b>2</b>
	DWG NO.		<b>6805W1103L YY1</b>		
		REV <b>0</b>			

DESCRIPTION: 680 SERIES CONTACTS

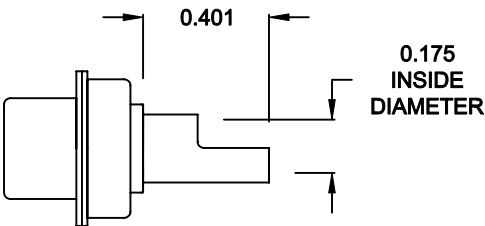
NOTE:  
SIGNAL AND POWER CONTACTS  
COME PRE-LOADED INTO INSULATORS



SIGNAL CONTACTS  
ACCEPTS UP TO 20 AWG WIRE




20 AMP POWER CONTACTS  
ACCEPTS UP TO 12 AWG WIRE



40 AMP POWER CONTACTS  
ACCEPTS UP TO 8 AWG WIRE

RoHS COMPLIANT

	THESE DRAWINGS AND SPECIFICATIONS ARE THE PROPERTY OF NorComp AND SHALL NOT BE REPRODUCED, COPIED OR USED AS THE BASIS FOR THE MANUFACTURE OF SALE OF APPARATUS WITHOUT WRITTEN PERMISSION.	DRAWN: <b>C. SMITH</b>		DATE: <b>09-11-06</b>	
		CHECKED: <b>X</b>		DATE: <b>X</b>	
<b>NorComp</b>		SCALE: <b>N.T.S.</b>	SHEET <b>2</b> OF <b>2</b>		REV <b>0</b>
		DWG NO. <b>6805W1103LYY1</b>			