

Welcome to [E-XFL.COM](https://www.e-xfl.com)

#### Understanding Embedded - PLDs (Programmable Logic Devices)

Embedded - PLDs, or Programmable Logic Devices, are a type of digital electronic component used to build reconfigurable digital circuits. Unlike fixed-function logic devices, PLDs can be programmed to perform specific functions by the user. This flexibility allows designers to customize the logic to meet the exact needs of their applications, making PLDs a crucial component in modern embedded systems.

#### Applications of Embedded - PLDs (Programmable Logic Devices)

The versatility of PLDs makes them suitable for a wide range of applications. In consumer electronics, PLDs are used to enhance the functionality and performance of

#### Details

|                         |   |
|-------------------------|---|
| Product Status          | Active  |
| Programmable Type       | EE PLD  |
| Number of Macrocells    | 10  |
| Voltage - Input         | 5V  |
| Speed                   | 20 ns   |
| Mounting Type           | Surface Mount   |
| Package / Case          | 24-TSSOP (0.173", 4.40mm Width)   |
| Supplier Device Package | 24-TSSOP  |
| Purchase URL            | <a href="https://www.e-xfl.com/product-detail/microchip-technology/atf22v10cqz-20xu">https://www.e-xfl.com/product-detail/microchip-technology/atf22v10cqz-20xu</a> |

## Features

- Industry-standard Architecture
- 12ns Maximum Pin-to-pin Delay
- Zero Power – 100µA Maximum Standby Power (Input Transition Detection)
- CMOS and TTL Compatible Inputs and Outputs
- Advanced Electrically Erasable Technology
  - Reprogrammable
  - 100% Tested
- Latch Feature Holds Inputs to Previous Logic State
- High-reliability CMOS Process
  - 20 Year Data Retention
  - 100 Erase/Write Cycles
  - 2,000V ESD Protection
  - 200mA Latchup Immunity
- Industrial Temperature Ranges
- Dual-in-line and Surface Mount Standard Pinouts
- PCI Compliant
- Green Package Options (Pb/Halide-free/RoHS Compliant) Available

## 1. Description

The Atmel® ATF22V10CZ/CQZ is a high-performance CMOS (electrically erasable) programmable logic device (PLD) which utilizes The Atmel proven electrically erasable Flash memory technology. Speeds down to 12ns with zero standby power dissipation are offered. All speed ranges are specified over the full 5V  $\pm 10\%$  range for industrial temperature ranges; 5V  $\pm 5\%$  for commercial range 5-volt devices. The ATF22V10CZ/CQZ provides a low voltage and edge-sensing “zero” power CMOS PLD solution with “zero” standby power (5µA typical). The ATF22V10CZ/CQZ provides a “zero” power CMOS PLD solution with 5V operating voltages, powering down automatically to the zero power-mode through The Atmel patented Input Transition Detection (ITD) circuitry when the device is idle, offering “zero” (100µA worst case) standby power. This feature allows the user to manage total system power to meet specific application requirements and enhance reliability. Pin “keeper” circuits on input and output pins eliminate static power consumed by pull-up resistors. The “CQZ” combines the low high-frequency  $I_{CC}$  of the “Q” design with the “Z” feature.

The ATF22V10CZ/CQZ incorporates a superset of the generic architectures, which allows direct replacement of the 22V10 family and most 24-pin combinatorial PLDs. Ten outputs are each allocated 8 to 16 product terms. Three different modes of operation, configured automatically with software, allow highly complex logic functions to be realized.

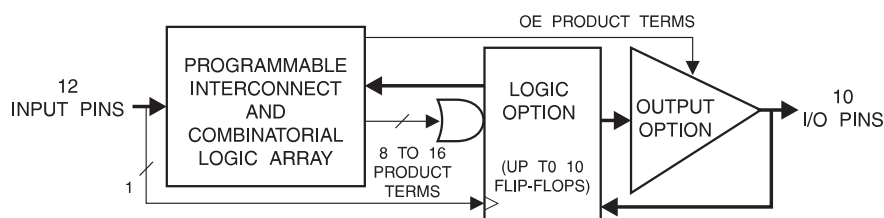


## High-performance Electrically Erasable Programmable Logic Device

**Atmel ATF22V10CZ**  
**Atmel ATF22V10CQZ**

**ATF22V10CZ is  
Not Recommended for New  
Design. Replaced by  
ATF22V10CQZ.**

**Figure 1-1. Block Diagram**

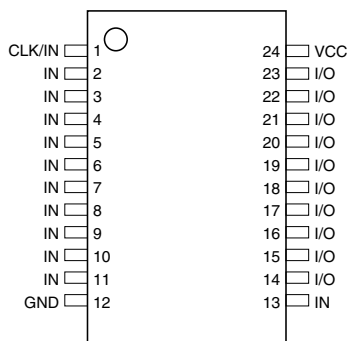


## 2. Pin Configurations

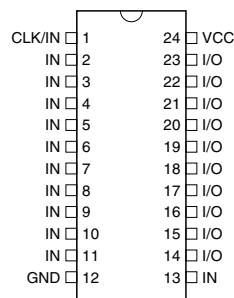
**Table 2-1. Pin Configurations (All Pinouts Top View)**

| Pin Name | Function               |
|----------|------------------------|
| CLK      | Clock                  |
| IN       | Logic Inputs           |
| I/O      | Bi-directional Buffers |
| VCC      | +5V Supply             |

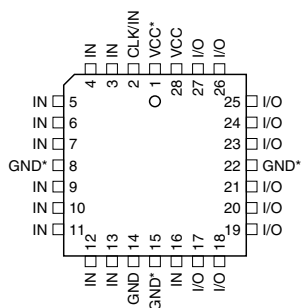
**Figure 2-1. TSSOP**



**Figure 2-2. DIP/SOIC**



**Figure 2-3. PLCC**



Note: For PLCC, P1, P8, P15 and P22 can be left unconnected. For superior performance, connect VCC to pin 1 and GND to 8, 15, and 22

## 3. Absolute Maximum Ratings\*

|  |                                |
|--|--------------------------------|
| Temperature Under Bias .....   | -40°C to +85°C                 |
| Storage Temperature.....   | -65°C to +150°C                |
| Voltage on Any Pin with<br>Respect to Ground.....                          | -2.0V to +7.0V <sup>(1)</sup>  |
| Voltage on Input Pins<br>with Respect to Ground<br>During Programming..... | -2.0V to +14.0V <sup>(1)</sup> |
| Programming Voltage with<br>Respect to Ground.....                         | -2.0V to +14.0V <sup>(1)</sup> |

\*NOTICE: Stresses beyond those listed under “Absolute Maximum Ratings” may cause permanent damage to the device. This is a stress rating only and functional operation of the device at these or any other conditions beyond those indicated in the operational sections of this specification is not implied. Exposure to absolute maximum rating conditions for extended periods may affect device reliability.

Note: 1. Minimum voltage is -0.6V DC, which may undershoot to -2.0V for pulses of less than 20ns. Maximum output pin voltage is  $V_{CC} + 0.75V$  DC, which may overshoot to 7.0V for pulses of less than 20ns.

## 4. DC and AC Operating Conditions

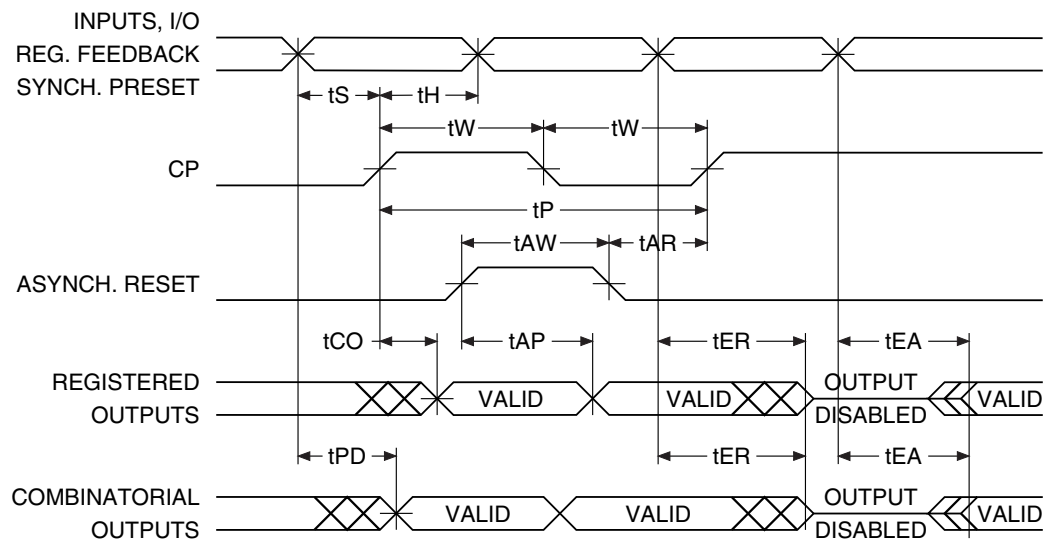
|                                 | Commercial  | Industrial   |
|---------------------------------|-------------|--------------|
| Operating Temperature (Ambient) | 0°C - 70°C  | -40°C - 85°C |
| $V_{CC}$ Power Supply           | 5V $\pm$ 5% | 5V $\pm$ 10% |

### 4.1 DC Characteristics

| Symbol                         | Parameter                         | Condition  |           |     | Min  | Typ | Max                    | Units |
|--------------------------------|-----------------------------------|--|-----------|-----|------|-----|------------------------|-------|
| I <sub>IL</sub>                | Input or I/O Low Leakage Current  | 0 ≤ V <sub>IN</sub> ≤ V <sub>IL</sub> (Max)<br>3.5 ≤ V <sub>IN</sub> ≤ V <sub>CC</sub>                       |           |     |      |     | -10                    | μA    |
| I <sub>IH</sub>                | Input or I/O High Leakage Current |  |           |     |      |     | 10                     | μA    |
| I <sub>CC</sub>                | Clocked Power Supply Current      | V <sub>CC</sub> = Max<br>Outputs Open,<br>f = 15MHz  | CZ-12, 15 | Com |      | 90  | 150                    | mA    |
|                                |                                   |  | CZ-15     | Ind |      | 90  | 180                    | mA    |
|                                |                                   |  | CQZ-20    | Com |      | 40  | 60                     | mA    |
|                                |                                   |  | CQZ-20    | Ind |      | 40  | 80                     | mA    |
| I <sub>SB</sub>                | Power Supply Current, Standby     | V <sub>CC</sub> = Max<br>V <sub>IN</sub> = MAX<br>Outputs Open   | CZ-12, 15 | Com |      | 5   | 100                    | μA    |
|                                |                                   |  | CZ-15     | Ind |      | 5   | 120                    | μA    |
|                                |                                   |  | CQZ-20    | Com |      | 5   | 100                    | μA    |
|                                |                                   |  | CQZ-20    | Ind |      | 5   | 120                    | μA    |
| I <sub>OS</sub> <sup>(1)</sup> | Output Short Circuit Current      | V <sub>OUT</sub> = 0.5V  |           |     |      |     | -130                   | mA    |
| V <sub>IL</sub>                | Input Low Voltage                 |  |           |     | -0.5 |     | 0.8                    | V     |
| V <sub>IH</sub>                | Input High Voltage                |  |           |     | 2.0  |     | V <sub>CC</sub> + 0.75 | V     |
| V <sub>OL</sub>                | Output Low Voltage                | V <sub>IN</sub> = V <sub>IH</sub> or V <sub>IL</sub><br>V <sub>CC</sub> = Min,<br>I <sub>OL</sub> = 16mA     |           |     |      |     | 0.5                    | V     |
| V <sub>OH</sub>                | Output High Voltage               | V <sub>IN</sub> = V <sub>IH</sub> or V <sub>IL</sub><br>V <sub>CCIO</sub> = Min,<br>I <sub>OH</sub> = -4.0mA |           |     | 2.4  |     |                        | V     |

Note: 1. Not more than one output at a time should be shorted. Duration of short circuit test should not exceed 30 sec

## 4.2 AC Waveforms



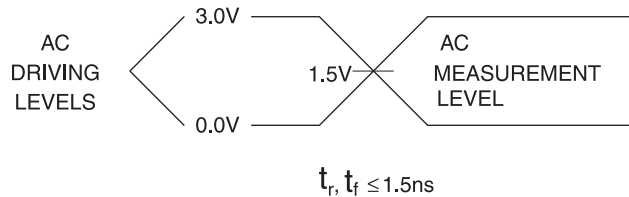
## 4.3 AC Characteristics<sup>(1)</sup>

| Symbol    | Parameter   | -12 |                    | -15 |                    | -20 |                      | Units             |
|-----------|---|-----|--------------------|-----|--------------------|-----|----------------------|-------------------|
|           |   | Min | Max                | Min | Max                | Min | Max                  |                   |
| $t_{PD}$  | Input or Feedback to Non-registered Output  | 3   | 12                 | 3   | 15                 | 3   | 20                   | ns                |
| $t_{CF}$  | Clock to Feedback   |     | 6                  |     | 4.5                |     | 8                    | ns                |
| $t_{CO}$  | Clock to Output   | 2   | 8                  | 2   | 8                  | 2   | 12                   | ns                |
| $t_S$     | Input or Feedback Setup Time  | 10  |                    | 10  |                    | 14  |                      | ns                |
| $t_H$     | Input Hold Time   | 0   |                    | 0   |                    | 0   |                      | ns                |
| $t_W$     | Clock Width   | 6   |                    | 6   |                    | 10  |                      | ns                |
| $f_{MAX}$ | External Feedback $1/(t_S + t_{CO})$<br>Internal Feedback $1/(t_S + t_{CF})$<br>No Feedback $1/(t_P)$ |     | 55.5<br>62<br>83.3 |     | 55.5<br>69<br>83.3 |     | 38.5<br>45.5<br>50.0 | MHz<br>MHz<br>MHz |
| $t_{EA}$  | Input to Output Enable - Product Term   | 3   | 12                 | 3   | 15                 | 3   | 20                   | ns                |
| $t_{ER}$  | Input to Output Disable - Product Term  | 2   | 15                 | 3   | 15                 | 3   | 20                   | ns                |
| $t_{PZX}$ | OE Pin to Output Enable   | 2   | 12                 | 2   | 15                 | 2   | 20                   | ns                |
| $t_{PXZ}$ | OE Pin to Output Disable  | 2   | 15                 | 2   | 15                 | 2   | 20                   | ns                |
| $t_{AP}$  | Input or I/O to Asynchronous Reset of Register  | 3   | 10                 | 3   | 15                 | 3   | 22                   | ns                |
| $t_{SP}$  | Setup Time, Synchronous Preset  | 10  |                    | 10  |                    | 14  |                      | ns                |
| $t_{AW}$  | Asynchronous Reset Width  | 7   |                    | 8   |                    | 20  |                      | ns                |
| $t_{AR}$  | Asynchronous Reset Recovery Time  | 5   |                    | 6   |                    | 20  |                      | ns                |
| $t_{SPR}$ | Synchronous Preset to Clock Recovery Time   | 10  |                    | 10  |                    | 14  |                      | ns                |

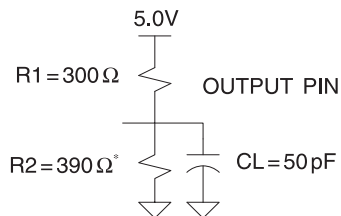
Note: 1. See ordering information for valid part numbers

## 4.4 Input Test Waveforms

### 4.4.1 Input Test Waveforms and Measurement Levels



### 4.4.2 Output Test Loads



Note: Similar competitor devices are specified with slightly different loads. These load differences may affect output signals' delay and slew rate. Atmel devices are tested with sufficient margins to meet compatible device specification conditions.

## 4.5 Pin Capacitance

Table 4-1. Pin Capacitance ( $f = 1\text{MHz}$ ,  $T = 25^\circ\text{C}^{(1)}$ )

|           | Typ | Max | Units | Conditions                                  |
|-----------|-----|-----|-------|---|
| $C_{IN}$  | 8   | 10  | pF    | $V_{IN} = 0\text{V}$ ; $f = 1.0\text{MHz}$  |
| $C_{I/O}$ | 8   | 10  | pF    | $V_{OUT} = 0\text{V}$ ; $f = 1.0\text{MHz}$ |

Note: 1. Typical values for nominal supply voltage. This parameter is only sampled and is not 100% tested

## 4.6 Power-up Reset

The registers in the Atmel® ATF22V10CZ/CQZ are designed to reset during power-up. At a point delayed slightly from  $V_{CC}$  crossing  $V_{RST}$ , all registers will be reset to the low state. The output state will depend on the polarity of the buffer.

This feature is critical for state machine initialization. However, due to the asynchronous nature of reset and the uncertainty of how  $V_{CC}$  actually rises in the system, the following conditions are required:

1. The  $V_{CC}$  rise must be monotonic and start below 0.7V
2. The clock must remain stable during  $T_{PR}$
3. After  $T_{PR}$  occurs, all input and feedback setup times must be met before driving the clock pin high

## 4.7 Preload of Register Outputs

The ATF22V10CZ/CQZ's registers are provided with circuitry to allow loading of each register with either a high or a low. This feature will simplify testing since any state can be forced into the registers to control test sequencing. A JEDEC file with preload is generated when a source file with vectors is compiled. Once downloaded, the JEDEC file preload sequence will be done automatically by most of the approved programmers after the programming.

## 5. Electronic Signature Word

There are 64-bits of programmable memory that are always available to the user, even if the device is secured. These bits can be used for user-specific data.

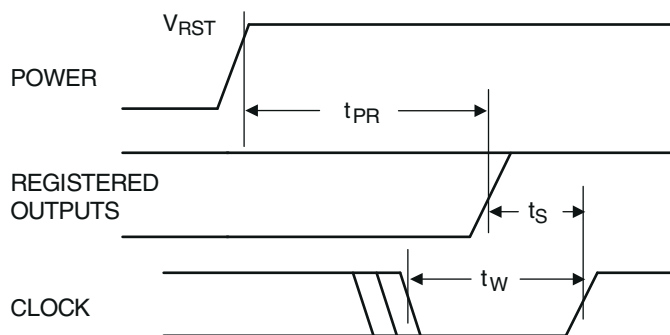
## 6. Security Fuse Usage

A single fuse is provided to prevent unauthorized copying of the Atmel® ATF22V10CZ/CQZ fuse patterns. Once programmed, fuse verify and preload are inhibited. However, the 64-bit User Signature remains accessible. The security fuse should be programmed last, as its effect is immediate.

## 7. Programming/Erasing

Programming/erasing is performed using standard PLD programmers. See CMOS PLD Programming Hardware and Software Support for information on software/programming.

**Figure 7-1.** Programming/Erasing Timing



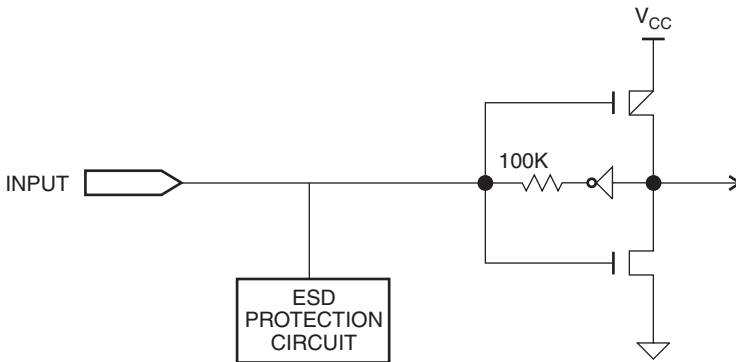
**Table 7-1.** Programming/Erasing

| Parameter | Description            | Typ | Max  | Units |
|-----------|------------------------|-----|------|-------|
| $T_{PR}$  | Power-up Reset Time    | 600 | 1000 | ns    |
| $V_{RST}$ | Power-up Reset Voltage | 3.8 | 4.5  | V     |

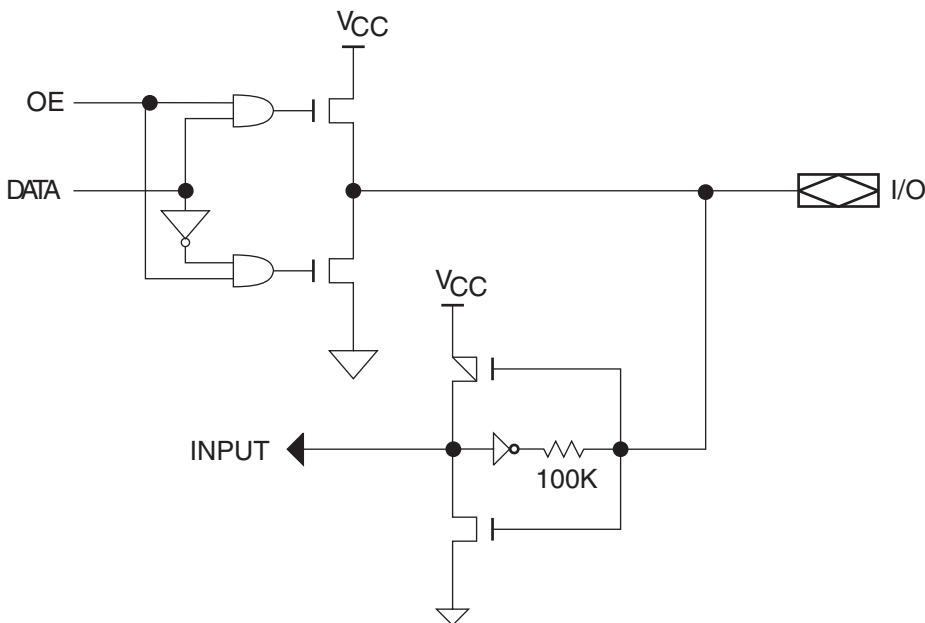
## 8. Input and I/O Pull-ups

All Atmel® ATF22V10CZ/CQZ family members have internal input and I/O pin-keeper circuits. Therefore, whenever inputs or I/Os are not being driven externally, they will maintain their last driven state. This ensures that all logic array inputs and device outputs are at known states. These are relatively weak active circuits that can be easily overridden by TTL-compatible drivers (see input and I/O diagrams below).

**Figure 8-1.** Input Diagram



**Figure 8-2.** I/O Diagram





## 9. Compiler Mode Selection

**Table 9-1.** Compiler Mode Selection

|          | <b>PAL Mode<br/>(5828 Fuses)</b>                | <b>GAL Mode<br/>(5892 Fuses)</b>                        |
|----------|---|---|
| Synario  | Atmel ATF22V10C (DIP)<br>Atmel ATF22V10C (PLCC) | Atmel ATF22V10C DIP (UES)<br>Atmel ATF22V10C PLCC (UES) |
| WINCUPPL | P22V10<br>P22V10LCC                             | G22V10<br>G22V10LCC                                     |

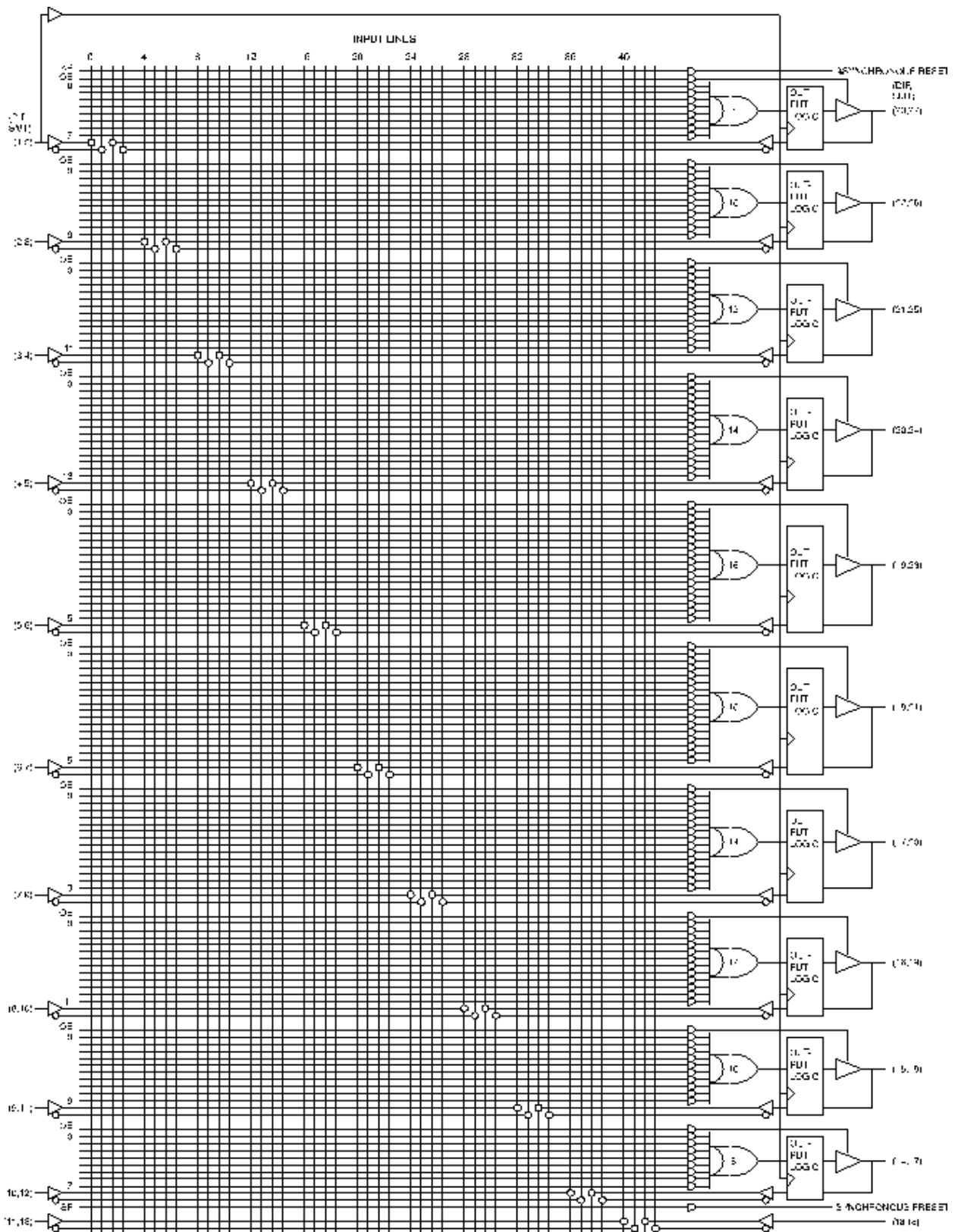
## 10. Functional Logic Diagram Description

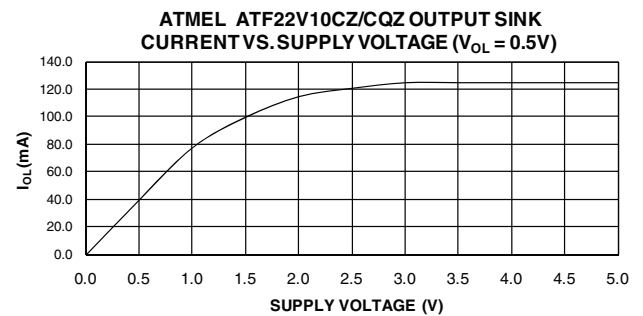
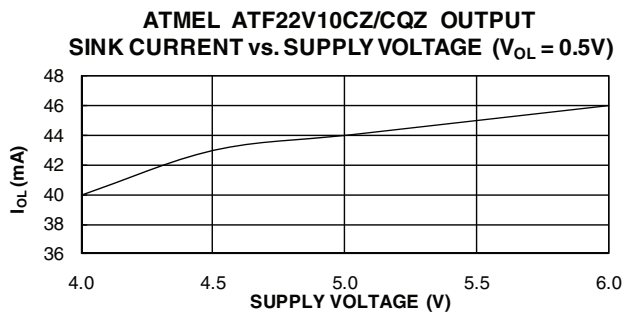
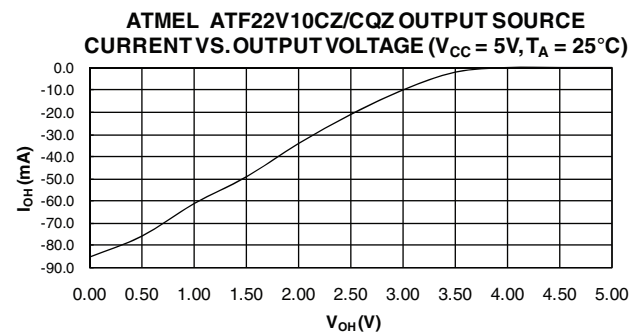
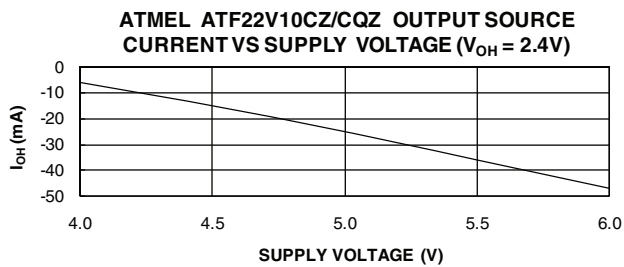
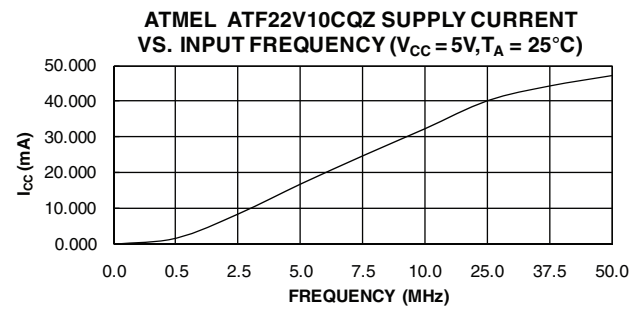
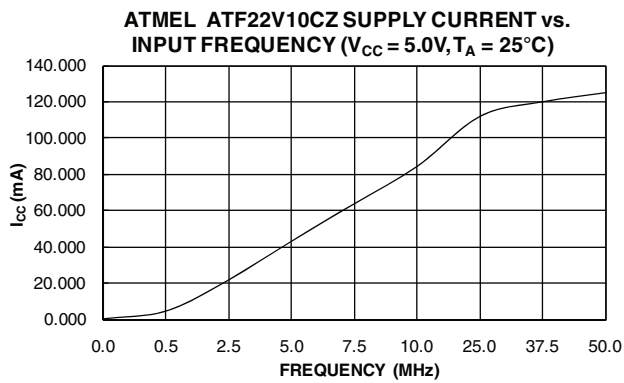
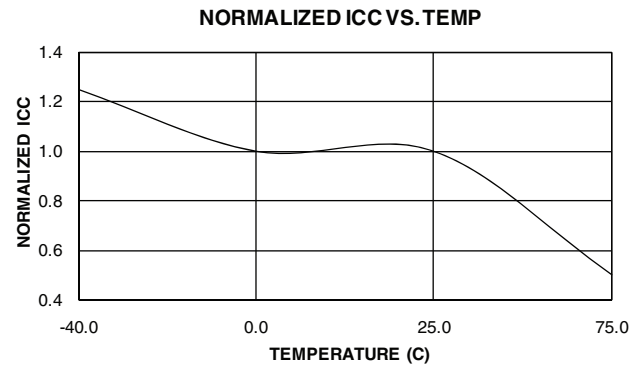
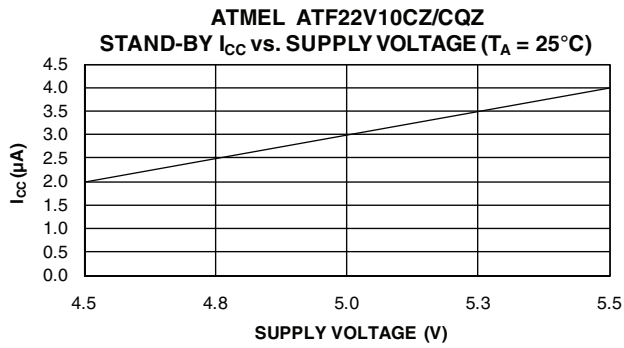
The Functional Logic Diagram describes the Atmel® ATF22V10CZ/CQZ architecture.

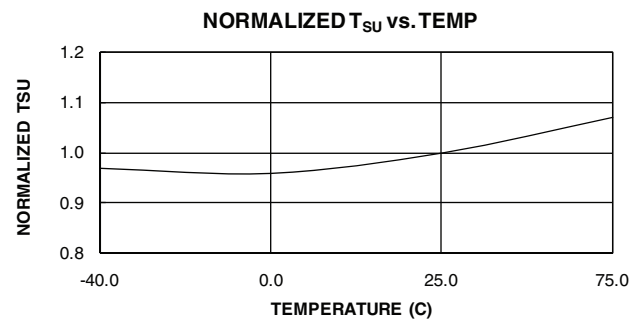
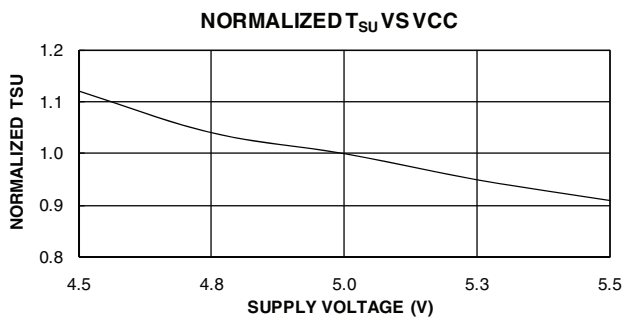
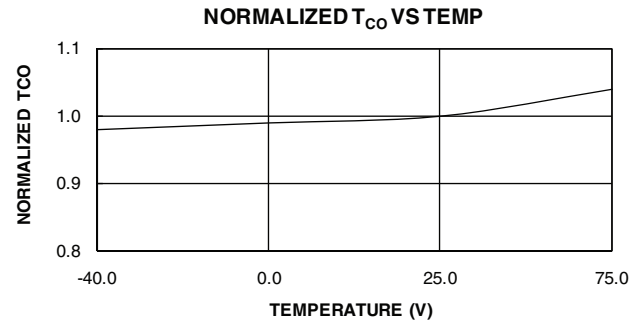
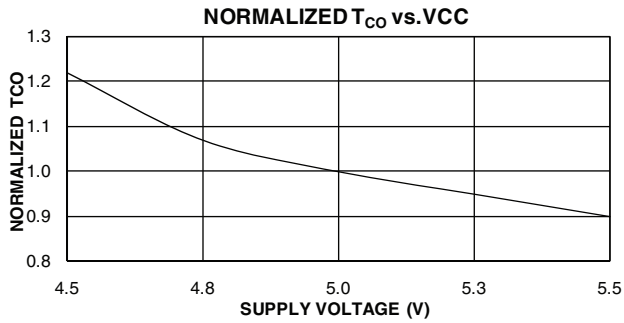
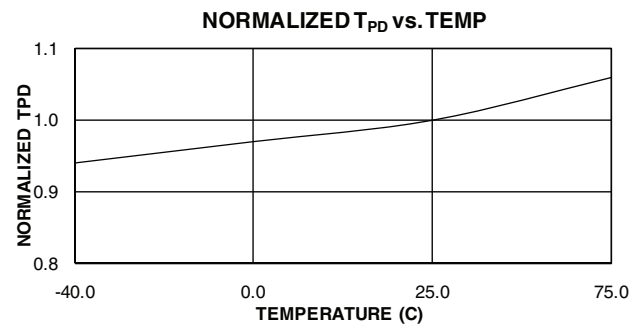
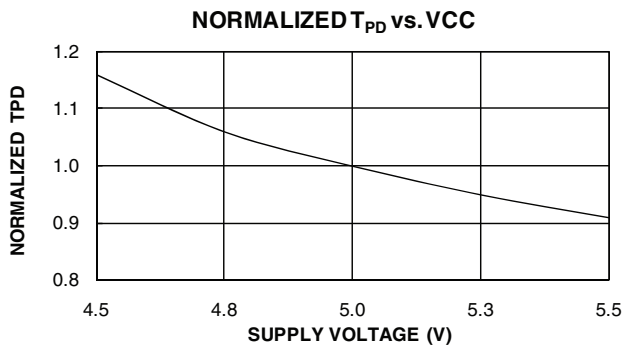
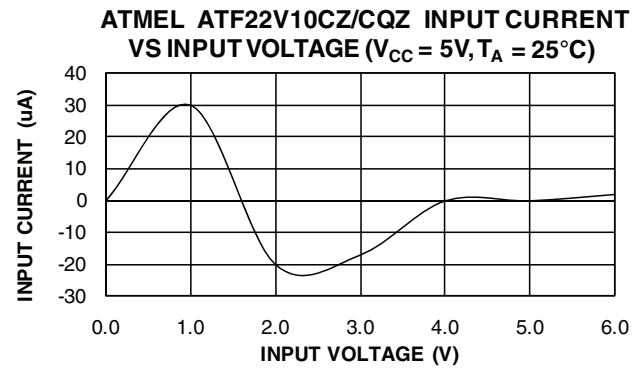
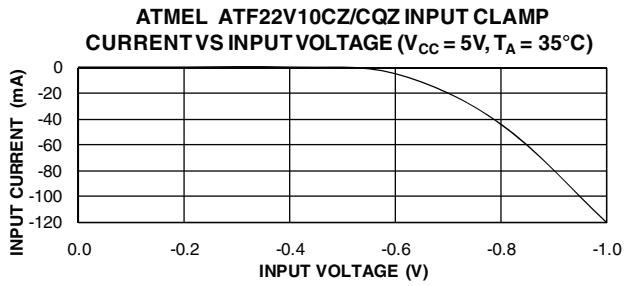
The ATF22V10CZ/CQZ has 12 inputs and 10 I/O macrocells. Each macrocell can be configured into one of four output configurations: active high/low, registered/combinatorial output. The universal architecture of the ATF22V10CZ/CQZ can be programmed to emulate most 24-pin PAL devices.

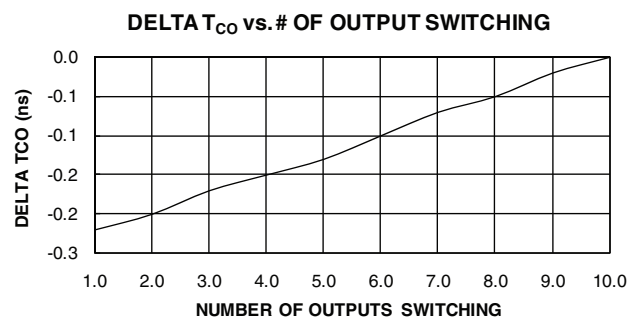
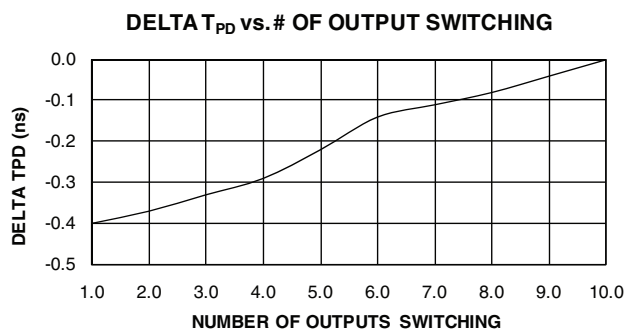
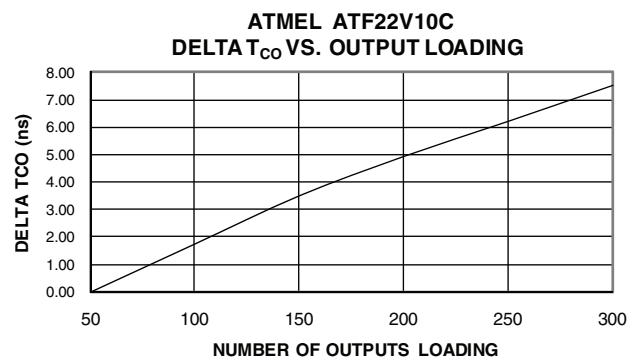
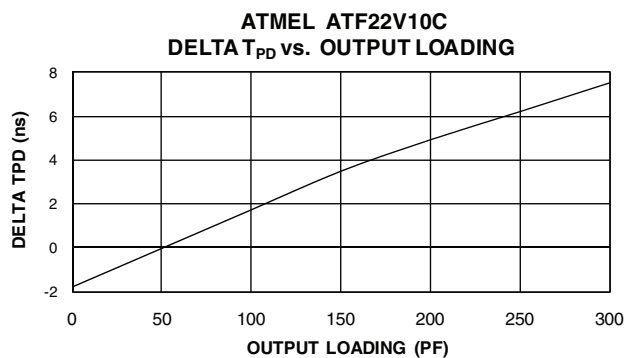
Unused product terms are automatically disabled by the compiler to decrease power consumption. A security fuse, when programmed, protects the contents of the ATF22V10CZ/CQZ. Eight bytes (64-fuses) of User Signature are accessible to the user for purposes such as storing project name, part number, revision or date. The User Signature is accessible regardless of the state of the security fuse.

**Figure 10-1.** Functional Logic Diagram









## 11. Ordering Information

### 11.1 Standard Package Options

| t <sub>PD</sub><br>(ns) | t <sub>S</sub><br>(ns) | t <sub>CO</sub><br>(ns) | Ordering Code    | Package | Operation Range                |
|-------------------------|------------------------|-------------------------|------------------|---------|--------------------------------|
| 12                      | 10                     | 8                       | ATF22V10CZ-12JC  | 28J     | Commercial<br>(0°C to 70°C)    |
|                         |                        |                         | ATF22V10CZ-12PC  | 24P3    |                                |
|                         |                        |                         | ATF22V10CZ-12SC  | 24S     |                                |
|                         |                        |                         | ATF22V10CZ-12XC  | 24X     |                                |
| 15                      | 10                     | 8                       | ATF22V10CZ-15JC  | 28J     | Commercial<br>(0°C to 70°C)    |
|                         |                        |                         | ATF22V10CZ-15PC  | 24P3    |                                |
|                         |                        |                         | ATF22V10CZ-15SC  | 24S     |                                |
|                         |                        |                         | ATF22V10CZ-15JI  | 28J     | Industrial<br>(-40°C to +85°C) |
|                         |                        |                         | ATF22V10CZ-15PI  | 24P3    |                                |
|                         |                        |                         | ATF22V10CZ-15SI  | 24S     |                                |
| 20                      | 14                     | 12                      | ATF22V10CQZ-20JC | 28J     | Commercial<br>(0°C to 70°C)    |
|                         |                        |                         | ATF22V10CQZ-20PC | 24P3    |                                |
|                         |                        |                         | ATF22V10CQZ-20SC | 24S     |                                |
|                         |                        |                         | ATF22V10CQZ-20XC | 24X     |                                |
|                         |                        |                         | ATF22V10CQZ-20JI | 28J     | Industrial<br>(-40°C to +85°C) |
|                         |                        |                         | ATF22V10CQZ-20PI | 24P3    |                                |
|                         |                        |                         | ATF22V10CQZ-20SI | 24S     |                                |
|                         |                        |                         | ATF22V10CQZ-20XI | 24X     |                                |

Note: Shaded parts are being obsoleted and are not recommended for new designs. Customers should transition to ROHS offering

### 11.2 Atmel ATF22V10CQZ Green Package Options (Pb/Halide-free/RoHS Compliant)

| t <sub>PD</sub><br>(ns) | t <sub>S</sub><br>(ns) | t <sub>CO</sub><br>(ns) | Ordering Code    | Package | Operation Range                |
|-------------------------|------------------------|-------------------------|------------------|---------|--------------------------------|
| 20                      | 14                     | 12                      | ATF22V10CQZ-20JU | 28J     | Industrial<br>(-40°C to +85°C) |
|                         |                        |                         | ATF22V10CQZ-20PU | 24P3    |                                |
|                         |                        |                         | ATF22V10CQZ-20SU | 24S     |                                |
|                         |                        |                         | ATF22V10CQZ-20XU | 24X     |                                |

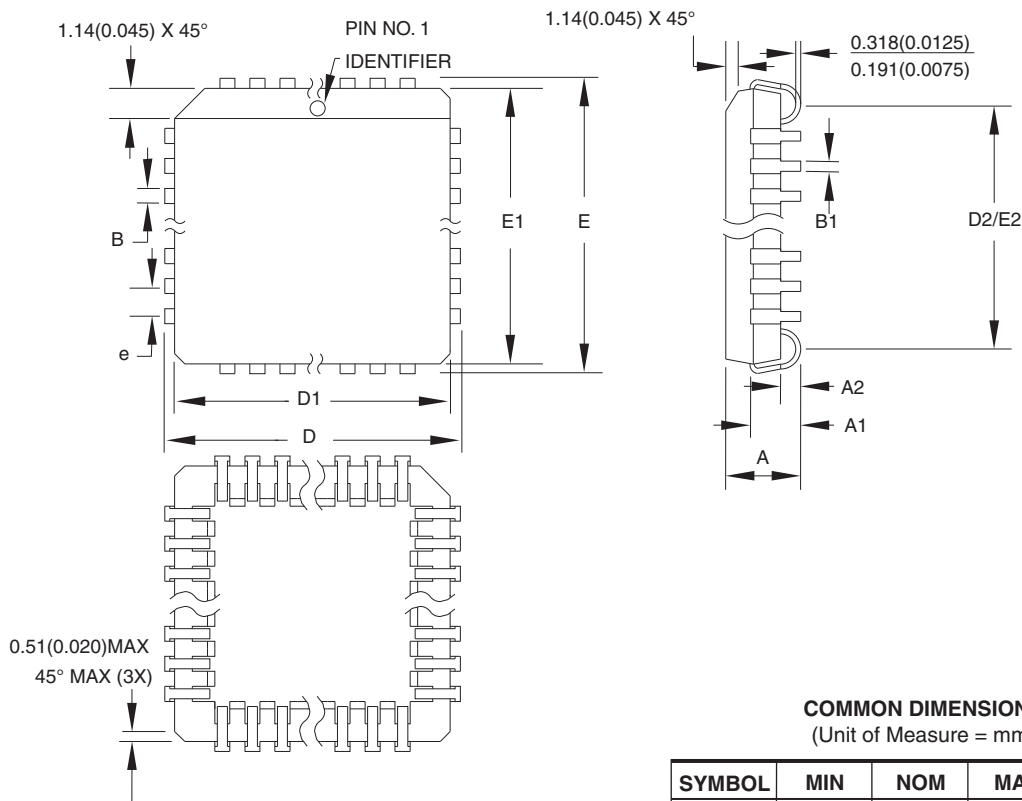
### 11.3 Using “C” Product for Industrial

To use commercial product for Industrial temperature ranges, down-grade one speed grade from the “I” to the “C” device (7ns “C” = 10ns “I”) and de-rate power by 30%.

| Package Type |  |
|--------------|--|
| <b>28J</b>   | 28-lead, Plastic J-leaded Chip Carrier (PLCC)                  |
| <b>24P3</b>  | 24-pin, 0.300", Plastic Dual Inline Package (PDIP)             |
| <b>24S</b>   | 24-lead, 0.300" Wide, Plastic Gull-Wing Small Outline (SOIC)   |
| <b>24X</b>   | 24-lead, 4.4mm Wide, Plastic Thin Shrink Small Outline (TSSOP) |

## 12. Packaging Information

### 12.1 28J – PLCC



**COMMON DIMENSIONS**  
(Unit of Measure = mm)

| SYMBOL | MIN       | NOM | MAX    | NOTE   |
|--------|-----------|-----|--------|--------|
| A      | 4.191     | —   | 4.572  |        |
| A1     | 2.286     | —   | 3.048  |        |
| A2     | 0.508     | —   | —      |        |
| D      | 12.319    | —   | 12.573 |        |
| D1     | 11.430    | —   | 11.582 | Note 2 |
| E      | 12.319    | —   | 12.573 |        |
| E1     | 11.430    | —   | 11.582 | Note 2 |
| D2/E2  | 9.906     | —   | 10.922 |        |
| B      | 0.660     | —   | 0.813  |        |
| B1     | 0.330     | —   | 0.533  |        |
| e      | 1.270 TYP |     |        |        |

- Notes:
1. This package conforms to JEDEC reference MS-018, Variation AB.
  2. Dimensions D1 and E1 do not include mold protrusion. Allowable protrusion is .010"(0.254mm) per side. Dimension D1 and E1 include mold mismatch and are measured at the extreme material condition at the upper or lower parting line.
  3. Lead coplanarity is 0.004" (0.102mm) maximum.

10/04/01



**Package Drawing Contact:**  
packagedrawings@atmel.com

**TITLE**

**28J, 28-lead, Plastic J-leaded Chip Carrier (PLCC)**

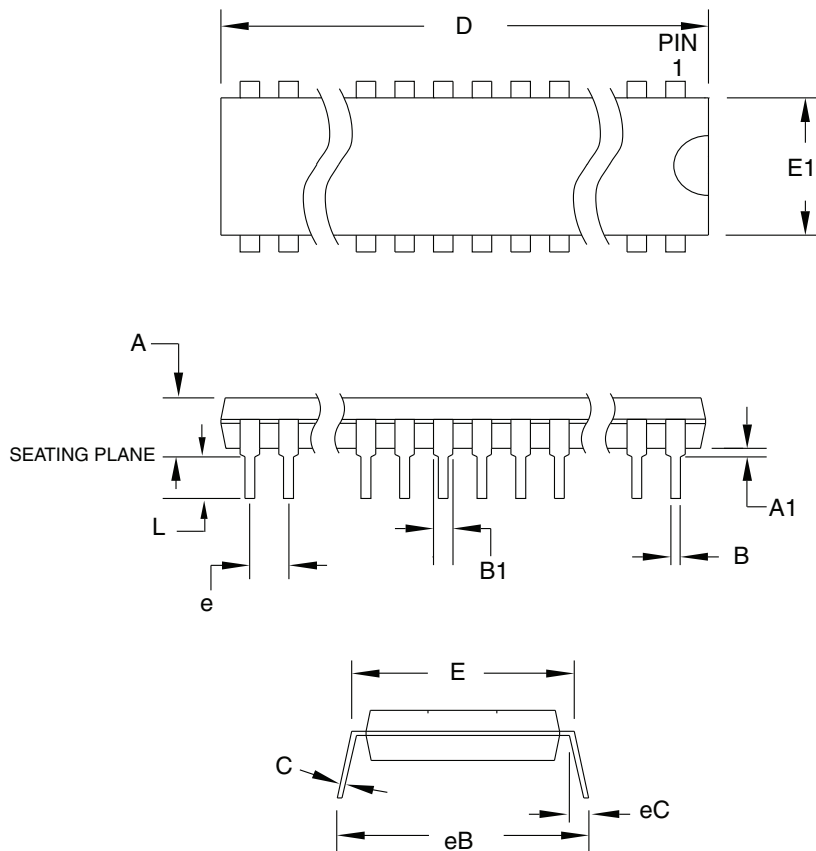
**DRAWING NO.**

28J

**REV.**

B

## 12.2 24P3 – PDIP



**COMMON DIMENSIONS**  
(Unit of Measure = mm)

| SYMBOL | MIN       | NOM | MAX    | NOTE   |
|--------|-----------|-----|--------|--------|
| A      | —         | —   | 5.334  |        |
| A1     | 0.381     | —   | —      |        |
| D      | 31.623    | —   | 32.131 | Note 2 |
| E      | 7.620     | —   | 8.255  |        |
| E1     | 6.096     | —   | 7.112  | Note 2 |
| B      | 0.356     | —   | 0.559  |        |
| B1     | 1.270     | —   | 1.651  |        |
| L      | 2.921     | —   | 3.810  |        |
| C      | 0.203     | —   | 0.356  |        |
| eB     | —         | —   | 10.922 |        |
| eC     | 0.000     | —   | 1.524  |        |
| e      | 2.540 TYP |     |        |        |

- Notes:
1. This package conforms to JEDEC reference MS-001, Variation AF.
  2. Dimensions D and E1 do not include mold Flash or Protrusion. Mold Flash or Protrusion shall not exceed 0.25mm (0.010").

6/1/04



**Package Drawing Contact:**  
packagedrawings@atmel.com

**TITLE**

**24P3**, 24-lead (0.300"/7.62mm Wide) Plastic Dual  
Inline Package (PDIP)

**DRAWING NO.**

24P3

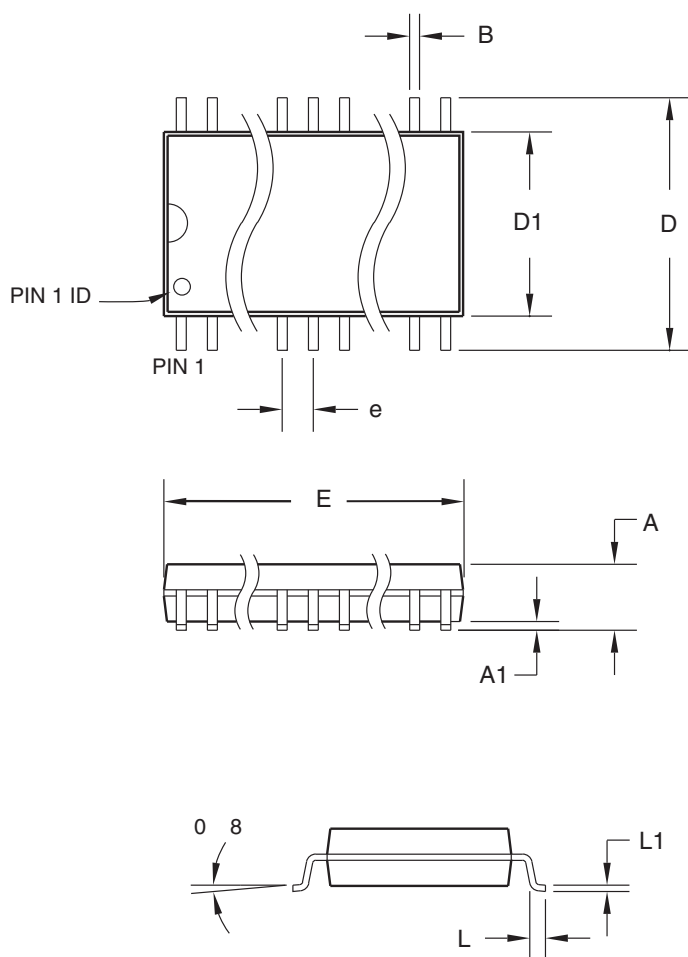
**REV.**

D





## 12.3 24S – SOIC



**COMMON DIMENSIONS**  
(Unit of Measure = mm)

| SYMBOL | MIN      | NOM | MAX   | NOTE |
|--------|----------|-----|-------|------|
| A      | –        | –   | 2.65  |      |
| A1     | 0.10     | –   | 0.30  |      |
| D      | 10.00    | –   | 10.65 |      |
| D1     | 7.40     | –   | 7.60  |      |
| E      | 15.20    | –   | 15.60 |      |
| B      | 0.33     | –   | 0.51  |      |
| L      | 0.40     | –   | 1.27  |      |
| L1     | 0.23     | –   | 0.32  |      |
| e      | 1.27 BSC |     |       |      |

06/17/2002



**Package Drawing Contact:**  
packagedrawings@atmel.com

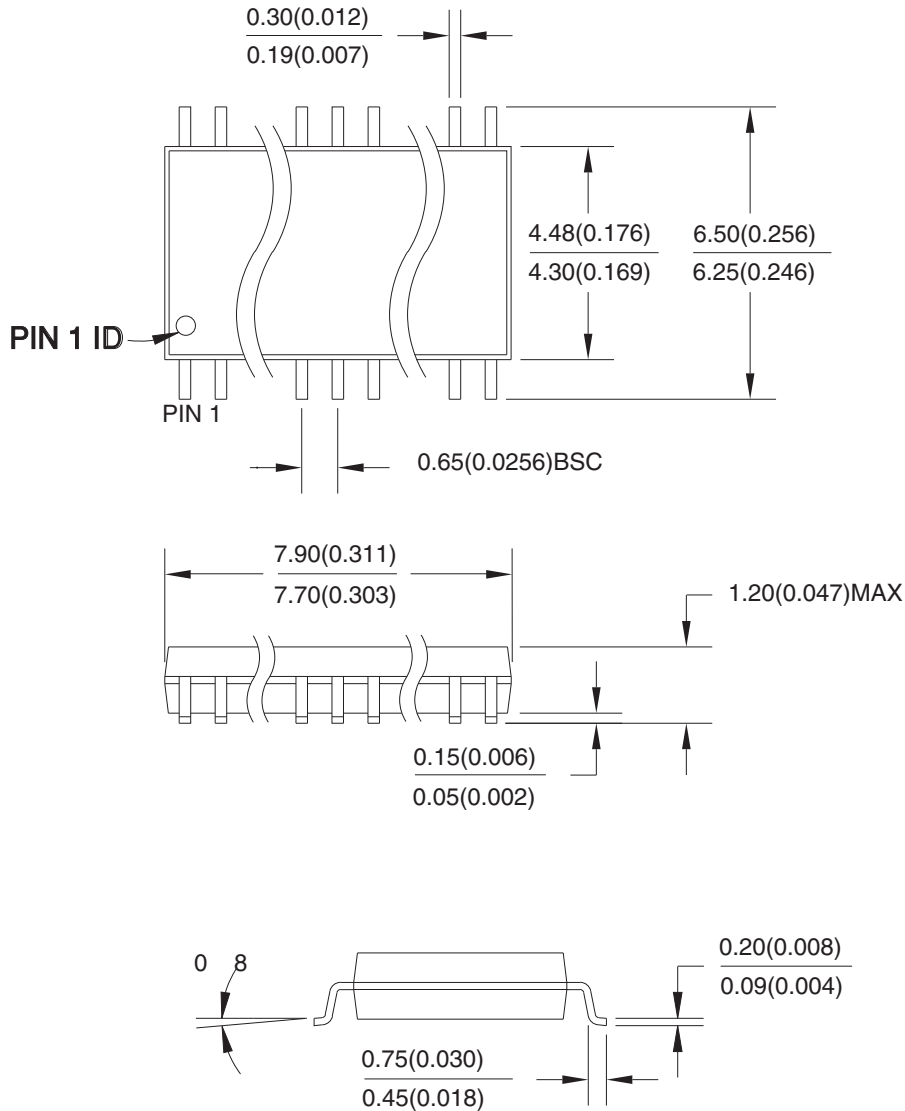
**TITLE**  
24S, 24-lead (0.300" body) Plastic Gull Wing Small  
Outline (SOIC)

**DRAWING NO.**  
24S

**REV.**  
B

## 12.4 24X – TSSOP

Dimensions in Millimeter and (Inches)\*  
JEDEC STANDARD MO-153 AD  
Controlling dimension: millimeters



04/11/2001



**Package Drawing Contact:**  
packagedrawings@atmel.com

### TITLE

24X, 24-lead (4.4mm body width) Plastic Thin Shrink  
Small Outline Package (TSSOP)

### DRAWING NO.

24X

### REV.

A



## 13. Revision History

| Doc. Rev. | Date    | Comments  |
|-----------|---------|---|
| 0778L     | 08/2010 | Change $t_s$ (ns) from 4.5 to 10 in Standard Package Options.<br>06/2014 The ATF22V10CZ is obsolete. Replaced by ATF22V10CQZ.   |
| 0778K     | 07/2010 | Remove Commercial Temperature Range<br>For $I_{SB}$ , change 25 $\mu$ A Max to 100 $\mu$ A max for commercial grade parts and 50 $\mu$ A Max to 120 $\mu$ A for Industrial grade parts<br>Shade Standard Package Options and add note, "Shaded parts are not recommended for new designs. Customers should transition to ROHS offering"<br>Remove Atmel ATF22V10CZ-15XC and Atmel ATF22V10CZ-15XI from Standard Package Options |
| 0778J     | 11/2005 | Add Green Package options   |



## Headquarters

---

**Atmel Corporation**  
2325 Orchard Parkway  
San Jose, CA 95131  
USA  
Tel: (+1)(408) 441-0311  
Fax: (+1)(408) 487-2600  
[www.atmel.com](http://www.atmel.com)

## International

---

**Atmel Asia Limited**  
Unit 01-5 & 16, 19/F  
BEA Tower, Millennium City 5  
418 Kwun Tong Road  
Kwun Tong, Kowloon  
HONG KONG  
Tel: (+852) 2245-6100  
Fax: (+852) 2722-1369

**Atmel Munich GmbH**  
Business Campus  
Parkring 4  
D-85748 Garching b. Munich  
GERMANY  
Tel: (+49) 89-31970-0  
Fax: (+49) 89-3194621

**Atmel Japan**  
9F, Tonetsu Shinkawa Bldg.  
1-24-8 Shinkawa  
Chuo-ku, Tokyo 104-0033  
JAPAN  
Tel: (+81) 3-3523-3551  
Fax: (+81) 3-3523-7581

## Product Contact

---

**Technical Support**  
[pld@atmel.com](mailto:pld@atmel.com)

**Sales Contact**  
[www.atmel.com/contacts](http://www.atmel.com/contacts)

**Literature Requests**  
[www.atmel.com/literature](http://www.atmel.com/literature)

---

**Disclaimer:** The information in this document is provided in connection with Atmel products. No license, express or implied, by estoppel or otherwise, to any intellectual property right is granted by this document or in connection with the sale of Atmel products. **EXCEPT AS SET FORTH IN ATMEL'S TERMS AND CONDITIONS OF SALE LOCATED ON ATMEL'S WEB SITE, ATMEL ASSUMES NO LIABILITY WHATSOEVER AND DISCLAIMS ANY EXPRESS, IMPLIED OR STATUTORY WARRANTY RELATING TO ITS PRODUCTS INCLUDING, BUT NOT LIMITED TO, THE IMPLIED WARRANTY OF MERCHANTABILITY, FITNESS FOR A PARTICULAR PURPOSE, OR NON-INFRINGEMENT. IN NO EVENT SHALL ATMEL BE LIABLE FOR ANY DIRECT, INDIRECT, CONSEQUENTIAL, PUNITIVE, SPECIAL OR INCIDENTAL DAMAGES (INCLUDING, WITHOUT LIMITATION, DAMAGES FOR LOSS OF PROFITS, BUSINESS INTERRUPTION, OR LOSS OF INFORMATION) ARISING OUT OF THE USE OR INABILITY TO USE THIS DOCUMENT, EVEN IF ATMEL HAS BEEN ADVISED OF THE POSSIBILITY OF SUCH DAMAGES.** Atmel makes no representations or warranties with respect to the accuracy or completeness of the contents of this document and reserves the right to make changes to specifications and product descriptions at any time without notice. Atmel does not make any commitment to update the information contained herein. Unless specifically provided otherwise, Atmel products are not suitable for, and shall not be used in, automotive applications. Atmel's products are not intended, authorized, or warranted for use as components in applications intended to support or sustain life.

© 2010 Atmel Corporation. All rights reserved.

Atmel®, logo and combinations thereof, Everywhere You Are® and others, are registered trademarks or trademarks of Atmel Corporation or its subsidiaries. Other terms and product names may be trademarks of others.