



Welcome to [E-XFL.COM](http://E-XFL.COM)

### What is "[Embedded - Microcontrollers](#)"?

"[Embedded - Microcontrollers](#)" refer to small, integrated circuits designed to perform specific tasks within larger systems. These microcontrollers are essentially compact computers on a single chip, containing a processor core, memory, and programmable input/output peripherals. They are called "embedded" because they are embedded within electronic devices to control various functions, rather than serving as standalone computers. Microcontrollers are crucial in modern electronics, providing the intelligence and control needed for a wide range of applications.

### Applications of "[Embedded - Microcontrollers](#)"

#### Details

Product Status	Obsolete
Core Processor	Z8
Core Size	8-Bit
Speed	8MHz
Connectivity	-
Peripherals	HLVD, POR, WDT
Number of I/O	16
Program Memory Size	32KB (32K x 8)
Program Memory Type	OTP
EEPROM Size	-
RAM Size	237 x 8
Voltage - Supply (Vcc/Vdd)	2V ~ 5.5V
Data Converters	-
Oscillator Type	Internal
Operating Temperature	-40°C ~ 105°C (TA)
Mounting Type	Through Hole
Package / Case	20-DIP (0.300", 7.62mm)
Supplier Device Package	-
Purchase URL	<a href="https://www.e-xfl.com/product-detail/zilog/zgp323hep2032g">https://www.e-xfl.com/product-detail/zilog/zgp323hep2032g</a>



# Table of Contents

Revision History . . . . .	iii
Development Features . . . . .	1
General Description . . . . .	2
Pin Description . . . . .	4
Absolute Maximum Ratings . . . . .	10
Standard Test Conditions . . . . .	10
DC Characteristics . . . . .	11
AC Characteristics . . . . .	16
Pin Functions . . . . .	18
XTAL1 Crystal 1 (Time-Based Input) . . . . .	18
XTAL2 Crystal 2 (Time-Based Output) . . . . .	18
Port 0 (P07–P00) . . . . .	18
Port 1 (P17–P10) . . . . .	19
Port 2 (P27–P20) . . . . .	20
Port 3 (P37–P30) . . . . .	21
RESET (Input, Active Low) . . . . .	25
Functional Description . . . . .	25
Program Memory . . . . .	25
RAM . . . . .	25
Expanded Register File . . . . .	26
Register File . . . . .	30
Stack . . . . .	31
Timers . . . . .	32
Counter/Timer Functional Blocks . . . . .	40
Expanded Register File Control Registers (0D) . . . . .	66
Expanded Register File Control Registers (0F) . . . . .	71
Standard Control Registers . . . . .	75
Package Information . . . . .	81
Ordering Information . . . . .	90

## Absolute Maximum Ratings

Stresses greater than those listed in Table 8 might cause permanent damage to the device. This rating is a stress rating only. Functional operation of the device at any condition above those indicated in the operational sections of these specifications is not implied. Exposure to absolute maximum rating conditions for an extended period might affect device reliability.

**Table 7. Absolute Maximum Ratings**

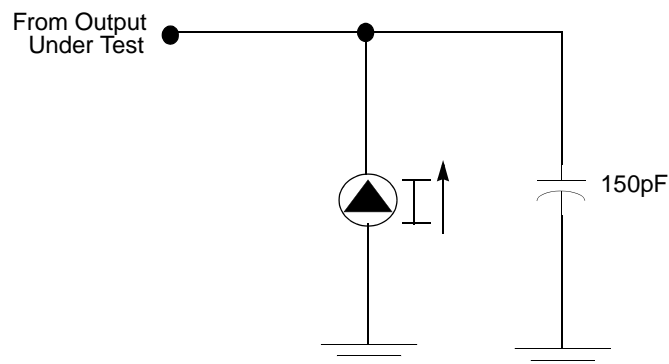
Parameter	Minimum	Maximum	Units	Notes
Ambient temperature under bias	-40	125	° C	1
Storage temperature	-65	+150	° C	
Voltage on any pin with respect to $V_{SS}$	-0.3	7.0	V	2
Voltage on $V_{DD}$ pin with respect to $V_{SS}$	-0.3	7.0	V	
Maximum current on input and/or inactive output pin	-5	+5	$\mu$ A	
Maximum output current from active output pin	-25	+25	mA	
Maximum current into $V_{DD}$ or out of $V_{SS}$		75	mA	

Notes:

1. See Ordering Information.
2. This voltage applies to all pins except the following:  $V_{DD}$ , P32, P33 and RESET.

## Standard Test Conditions

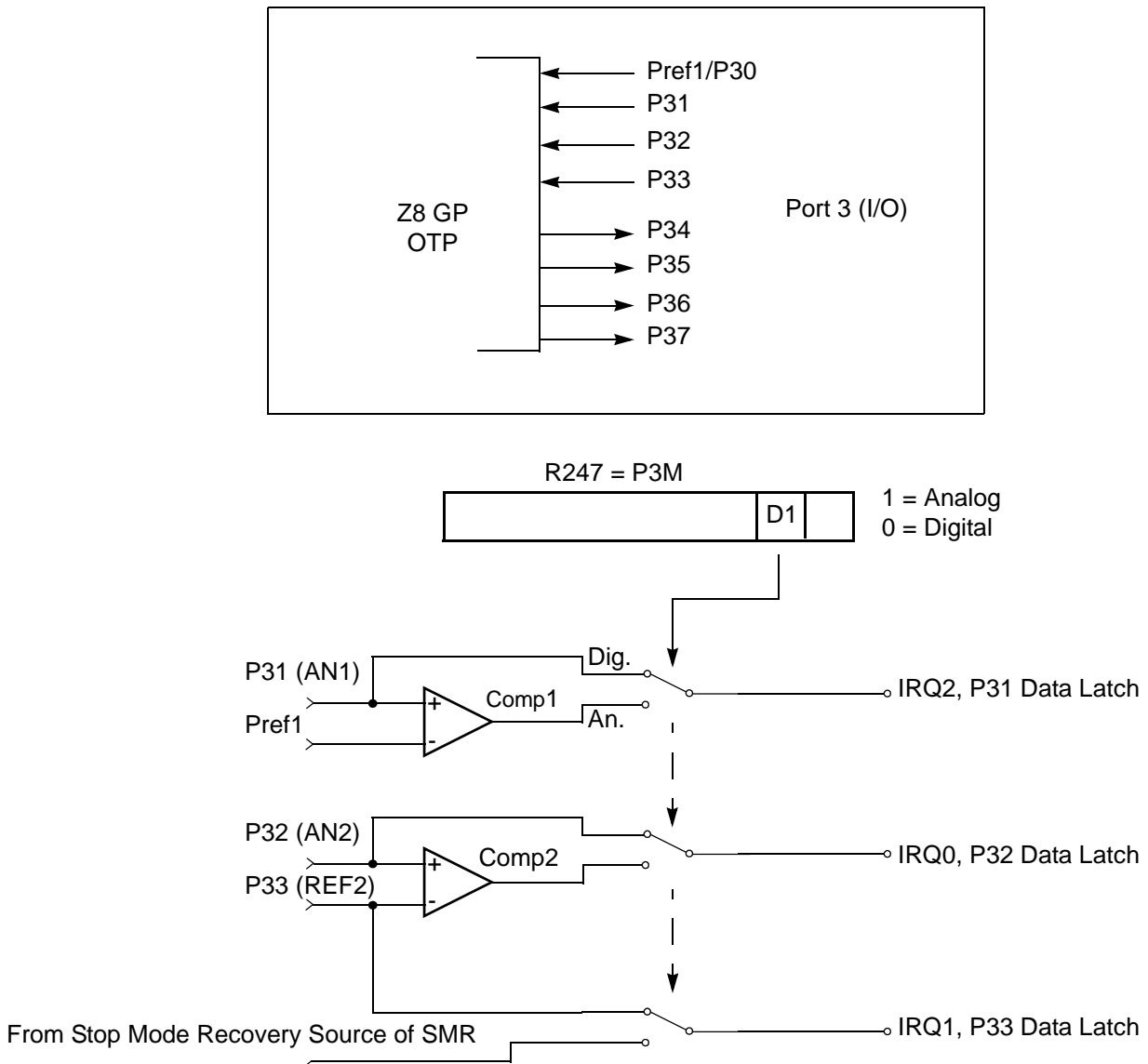
The characteristics listed in this product specification apply for standard test conditions as noted. All voltages are referenced to GND. Positive current flows into the referenced pin (see Figure 7).



**Figure 7. Test Load Diagram**

**Table 11. GP323HA DC Characteristics**

<b>T<sub>A</sub> = -40°C to +125°C</b>								
<b>Symbol</b>	<b>Parameter</b>	<b>V<sub>CC</sub></b>	<b>Min</b>	<b>Typ(7)</b>	<b>Max</b>	<b>Units</b>	<b>Conditions</b>	<b>Notes</b>
V <sub>CC</sub>	Supply Voltage		2.0		5.5	V	See Note 5	5
V <sub>CH</sub>	Clock Input High Voltage	2.0-5.5	0.8 V <sub>CC</sub>		V <sub>CC</sub> +0.3	V	Driven by External Clock Generator	
V <sub>CL</sub>	Clock Input Low Voltage	2.0-5.5	V <sub>SS</sub> -0.3		0.4	V	Driven by External Clock Generator	
V <sub>IH</sub>	Input High Voltage	2.0-5.5	0.7 V <sub>CC</sub>		V <sub>CC</sub> +0.3	V		
V <sub>IL</sub>	Input Low Voltage	2.0-5.5	V <sub>SS</sub> -0.3		0.2 V <sub>CC</sub>	V		
V <sub>OH1</sub>	Output High Voltage	2.0-5.5	V <sub>CC</sub> -0.4			V	I <sub>OH</sub> = -0.5mA	
V <sub>OH2</sub>	Output High Voltage (P36, P37, P00, P01)	2.0-5.5	V <sub>CC</sub> -0.8			V	I <sub>OH</sub> = -7mA	
V <sub>OL1</sub>	Output Low Voltage	2.0-5.5			0.4	V	I <sub>OL</sub> = 4.0mA	
V <sub>OL2</sub>	Output Low Voltage (P00, P01, P36, P37)	2.0-5.5			0.8	V	I <sub>OL</sub> = 10mA	
V <sub>OFFSET</sub>	Comparator Input Offset Voltage	2.0-5.5			25	mV		
V <sub>REF</sub>	Comparator Reference Voltage	2.0-5.5	0		V <sub>DD</sub> -1.75	V		
I <sub>IL</sub>	Input Leakage	2.0-5.5	-1		1	μA	V <sub>IN</sub> = 0V, V <sub>CC</sub> Pull-ups disabled	
R <sub>PU</sub>	Pull-up Resistance	2.0V	200		700	KΩ	V <sub>IN</sub> = 0V; Pullups selected by mask option	
		3.6V	50		300	KΩ		
		5.0V	25		175	KΩ		
I <sub>OL</sub>	Output Leakage	2.0-5.5	-1		1	μA	V <sub>IN</sub> = 0V, V <sub>CC</sub>	
I <sub>CC</sub>	Supply Current	2.0V		1	3	mA	at 8.0 MHz	1, 2
		3.6V		5	10	mA	at 8.0 MHz	1, 2
		5.5V		10	15	mA	at 8.0 MHz	1, 2
I <sub>CC1</sub>	Standby Current (HALT Mode)	2.0V		0.5	1.6	mA	V <sub>IN</sub> = 0V, Clock at 8.0MHz	1, 2, 6
		3.6V		0.8	2.0	mA	V <sub>IN</sub> = 0V, Clock at 8.0MHz	1, 2, 6
		5.5V		1.3	3.2	mA	V <sub>IN</sub> = 0V, Clock at 8.0MHz	1, 2, 6
I <sub>CC2</sub>	Standby Current (Stop Mode)	2.0V		1.6	15	μA	V <sub>IN</sub> = 0 V, V <sub>CC</sub> WDT not Running	3
		3.6V		1.8	20	μA	V <sub>IN</sub> = 0 V, V <sub>CC</sub> WDT not Running	3
		5.5V		1.9	25	μA	V <sub>IN</sub> = 0 V, V <sub>CC</sub> WDT not Running	3
		2.0V		5	30	μA	V <sub>IN</sub> = 0 V, V <sub>CC</sub> WDT is Running	3
		3.6V		8	40	μA	V <sub>IN</sub> = 0 V, V <sub>CC</sub> WDT is Running	3
		5.5V		15	60	μA	V <sub>IN</sub> = 0 V, V <sub>CC</sub> WDT is Running	3
I <sub>LV</sub>	Standby Current (Low Voltage)			1.2	6	μA	Measured at 1.3V	4
V <sub>BO</sub>	V <sub>CC</sub> Low Voltage Protection			1.9	2.15	V	8MHz maximum Ext. CLK Freq.	
V <sub>LVD</sub>	V <sub>CC</sub> Low Voltage Detection			2.4		V		



**Figure 12. Port 3 Configuration**

Two on-board comparators process analog signals on P31 and P32, with reference to the voltage on Pref1 and P33. The analog function is enabled by programming the Port 3 Mode Register (bit 1). P31 and P32 are programmable as rising, falling, or both edge triggered interrupts (IRQ register bits 6 and 7). Pref1 and P33 are the comparator reference voltage inputs. Access to the Counter Timer edge-detection circuit is through P31 or P20 (see “T8 and T16 Common Functions—

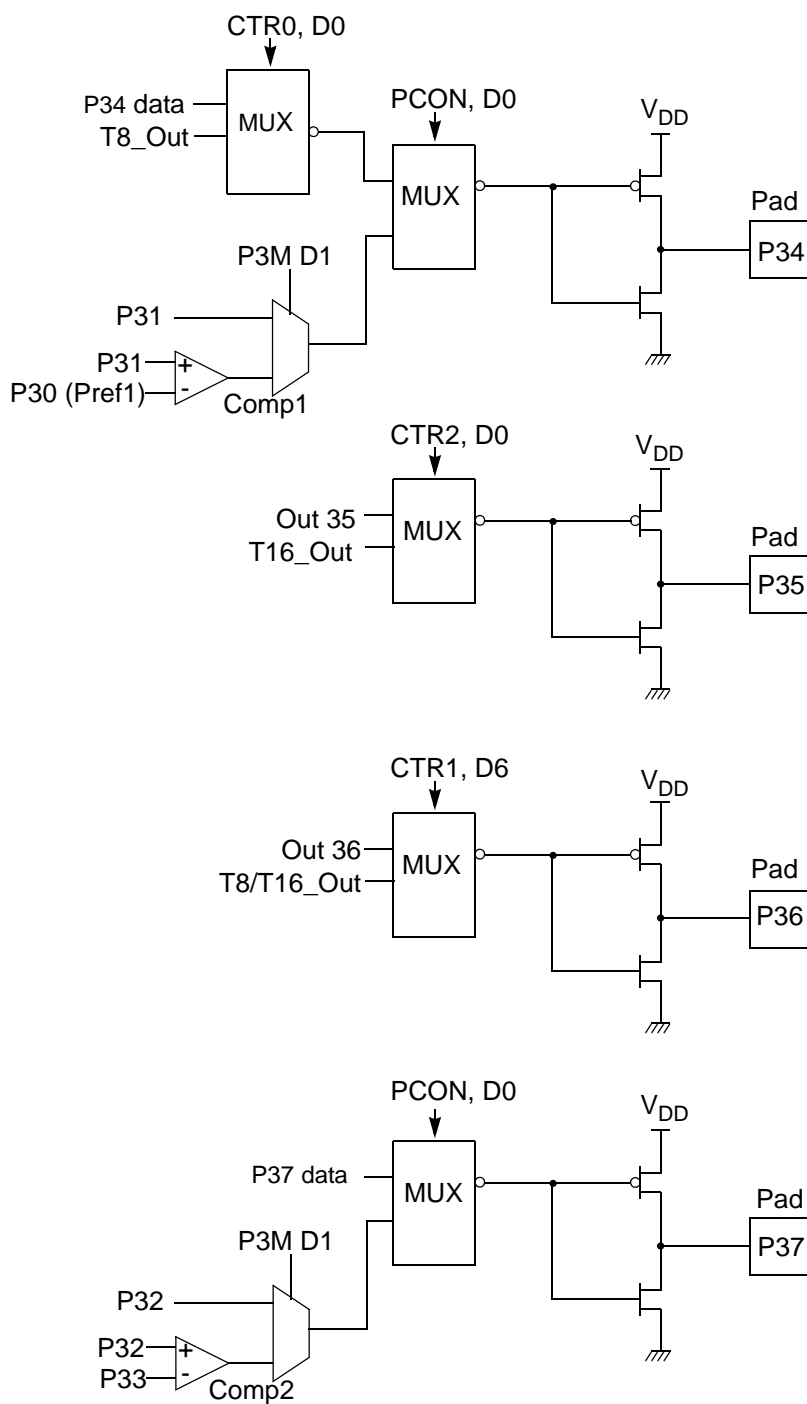


Figure 13. Port 3 Counter/Timer Output Configuration



### Comparator Inputs

In analog mode, P31 and P32 have a comparator front end. The comparator reference is supplied to P33 and Pref1. In this mode, the P33 internal data latch and its corresponding IRQ1 are diverted to the SMR sources (excluding P31, P32, and P33) as indicated in Figure 12 on page 22. In digital mode, P33 is used as D3 of the Port 3 input register, which then generates IRQ1.

- **Note:** Comparators are powered down by entering Stop Mode. For P31–P33 to be used in a Stop Mode Recovery source, these inputs must be placed into digital mode.

### Comparator Outputs

These channels can be programmed to be output on P34 and P37 through the PCON register.

## **RESET (Input, Active Low)**

Reset initializes the MCU and is accomplished either through Power-On, Watch-Dog Timer, Stop Mode Recovery, Low-Voltage detection, or external reset. During Power-On Reset and Watch-Dog Timer Reset, the internally generated reset drives the reset pin Low for the POR time. Any devices driving the external reset line must be open-drain to avoid damage from a possible conflict during reset conditions. Pull-up is provided internally.

When the Z8 GP asserts (Low) the RESET pin, the internal pull-up is disabled. The Z8 GP does not assert the RESET pin when under VBO.

- **Note:** The external Reset does not initiate an exit from STOP mode.

## Functional Description

This device incorporates special functions to enhance the Z8<sup>®</sup> functionality in consumer and battery-operated applications.

### Program Memory

This device addresses up to 32KB of OTP memory. The first 12 Bytes are reserved for interrupt vectors. These locations contain the six 16-bit vectors that correspond to the six available interrupts.

### RAM

This device features 256B of RAM. See Figure 14.

The counter/timers are mapped into ERF group D. Access is easily performed using the following:

```
LD      RP, #0Dh      ; Select ERF D
for access to bank D

                                ; (working
                                ; register group 0)
LD      R0, #xx      ; load CTR0
LD      1, #xx      ; load CTR1
LD      R1, 2      ; CTR2→CTR1

LD      RP, #0Dh      ; Select ERF D
for access to bank D

                                ; (working
                                ; register group 0)
LD      RP, #7Dh      ; Select
expanded register bank D and working ; register
group 7 of bank 0 for access.
LD      71h, 2
; CTRL2→register 71h
LD      R1, 2
; CTRL2→register 71h
```

## Register File

The register file (bank 0) consists of 4 I/O port registers, 237 general-purpose registers, 16 control and status registers (R0–R3, R4–R239, and R240–R255, respectively), and two expanded registers groups in Banks D (see Table 15) and F. Instructions can access registers directly or indirectly through an 8-bit address field, thereby allowing a short, 4-bit register address to use the Register Pointer (Figure 17). In the 4-bit mode, the register file is divided into 16 working register groups, each occupying 16 continuous locations. The Register Pointer addresses the starting location of the active working register group.

- **Note:** Working register group E0–EF can only be accessed through working registers and indirect addressing modes.



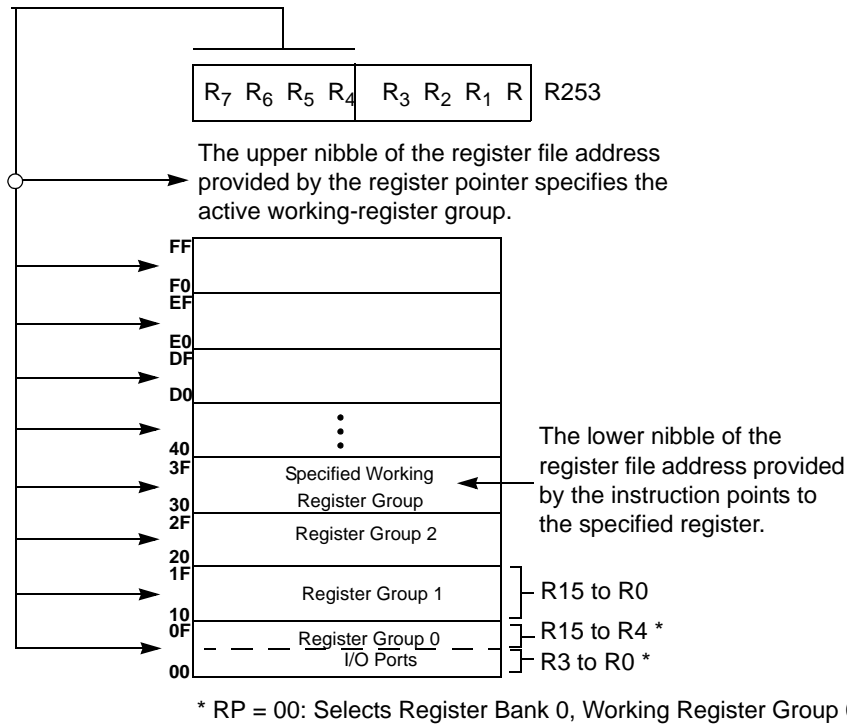


Figure 17. Register Pointer—Detail

## Stack

The internal register file is used for the stack. An 8-bit Stack Pointer SPL (R255) is used for the internal stack that resides in the general-purpose registers (R4–R239). SPH (R254) can be used as a general-purpose register.



### **T8/T16\_Logic/Edge \_Detect**

In TRANSMIT Mode, this field defines how the outputs of T8 and T16 are combined (AND, OR, NOR, NAND).

In DEMODULATION Mode, this field defines which edge should be detected by the edge detector.

### **Transmit\_Submode/Glitch Filter**

In Transmit Mode, this field defines whether T8 and T16 are in the PING-PONG mode or in independent normal operation mode. Setting this field to “NORMAL OPERATION Mode” terminates the “PING-PONG Mode” operation. When set to 10, T16 is immediately forced to a 0; a setting of 11 forces T16 to output a 1.

In DEMODULATION Mode, this field defines the width of the glitch that must be filtered out.

### **Initial\_T8\_Out/Rising\_Edge**

In TRANSMIT Mode, if 0, the output of T8 is set to 0 when it starts to count. If 1, the output of T8 is set to 1 when it starts to count. When the counter is not enabled and this bit is set to 1 or 0, T8\_OUT is set to the opposite state of this bit. This ensures that when the clock is enabled, a transition occurs to the initial state set by CTR1, D1.

In DEMODULATION Mode, this bit is set to 1 when a rising edge is detected in the input signal. In order to reset the mode, a 1 should be written to this location.

### **Initial\_T16 Out/Falling \_Edge**

In TRANSMIT Mode, if it is 0, the output of T16 is set to 0 when it starts to count. If it is 1, the output of T16 is set to 1 when it starts to count. This bit is effective only in Normal or PING-PONG Mode (CTR1, D3; D2). When the counter is not enabled and this bit is set, T16\_OUT is set to the opposite state of this bit. This ensures that when the clock is enabled, a transition occurs to the initial state set by CTR1, D0.

In DEMODULATION Mode, this bit is set to 1 when a falling edge is detected in the input signal. In order to reset it, a 1 should be written to this location.

- **Note:** Modifying CTR1 (D1 or D0) while the counters are enabled causes unpredictable output from T8/T16\_OUT.

### **CTR2 Counter/Timer 16 Control Register—CTR2(D)02H**

Table 17 lists and briefly describes the fields for this register.

In Demodulation Mode, when set to 0, T16 captures and reloads on detection of all the edges. When set to 1, T16 captures and detects on the first edge but ignores the subsequent edges. For details, see the description of T16 Demodulation Mode on page 47.

### Time\_Out

This bit is set when T16 times out (terminal count reached). To reset the bit, write a 1 to this location.

### T16\_Clock

This bit defines the frequency of the input signal to Counter/Timer16.

### Capture\_INT\_Mask

This bit is set to allow an interrupt when data is captured into LO16 and HI16.

### Counter\_INT\_Mask

Set this bit to allow an interrupt when T16 times out.

### P35\_Out

This bit defines whether P35 is used as a normal output pin or T16 output.

### CTR3 T8/T16 Control Register—CTR3(D)03H

Table 18 lists and briefly describes the fields for this register. This register allows the T<sub>8</sub> and T<sub>16</sub> counters to be synchronized.

**Table 18. CTR3 (D)03H: T8/T16 Control Register**

Field	Bit Position		Value	Description
T <sub>16</sub> Enable	7-----	R	0*	Counter Disabled
		R	1	Counter Enabled
		W	0	Stop Counter
		W	1	Enable Counter
T <sub>8</sub> Enable	-6-----	R	0*	Counter Disabled
		R	1	Counter Enabled
		W	0	Stop Counter
		W	1	Enable Counter
Sync Mode	--5-----	R/W	0**	Disable Sync Mode
			1	Enable Sync Mode

**Table 18. CTR3 (D)03H: T8/T16 Control Register (Continued)**

Field	Bit Position		Value	Description
Reserved	---43210	R	1	Always reads 11111
		W	x	No Effect

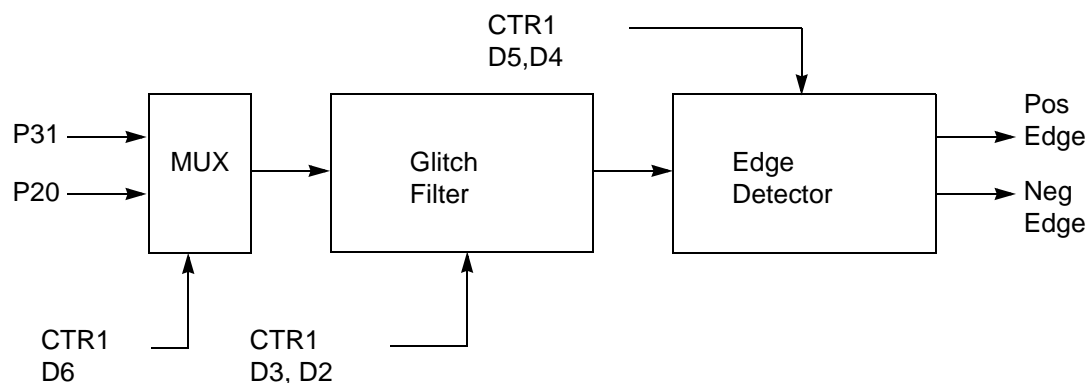
\*Indicates the value upon Power-On Reset.

\*\*Indicates the value upon Power-On Reset. Not reset with a Stop Mode recovery.

## Counter/Timer Functional Blocks

### Input Circuit

The edge detector monitors the input signal on P31 or P20. Based on CTR1 D5–D4, a pulse is generated at the Pos Edge or Neg Edge line when an edge is detected. Glitches in the input signal that have a width less than specified (CTR1 D3, D2) are filtered out (see Figure 18).



**Figure 18. Glitch Filter Circuitry**

### T8 Transmit Mode

Before T8 is enabled, the output of T8 depends on CTR1, D1. If it is 0, T8\_OUT is 1; if it is 1, T8\_OUT is 0. See Figure 19.

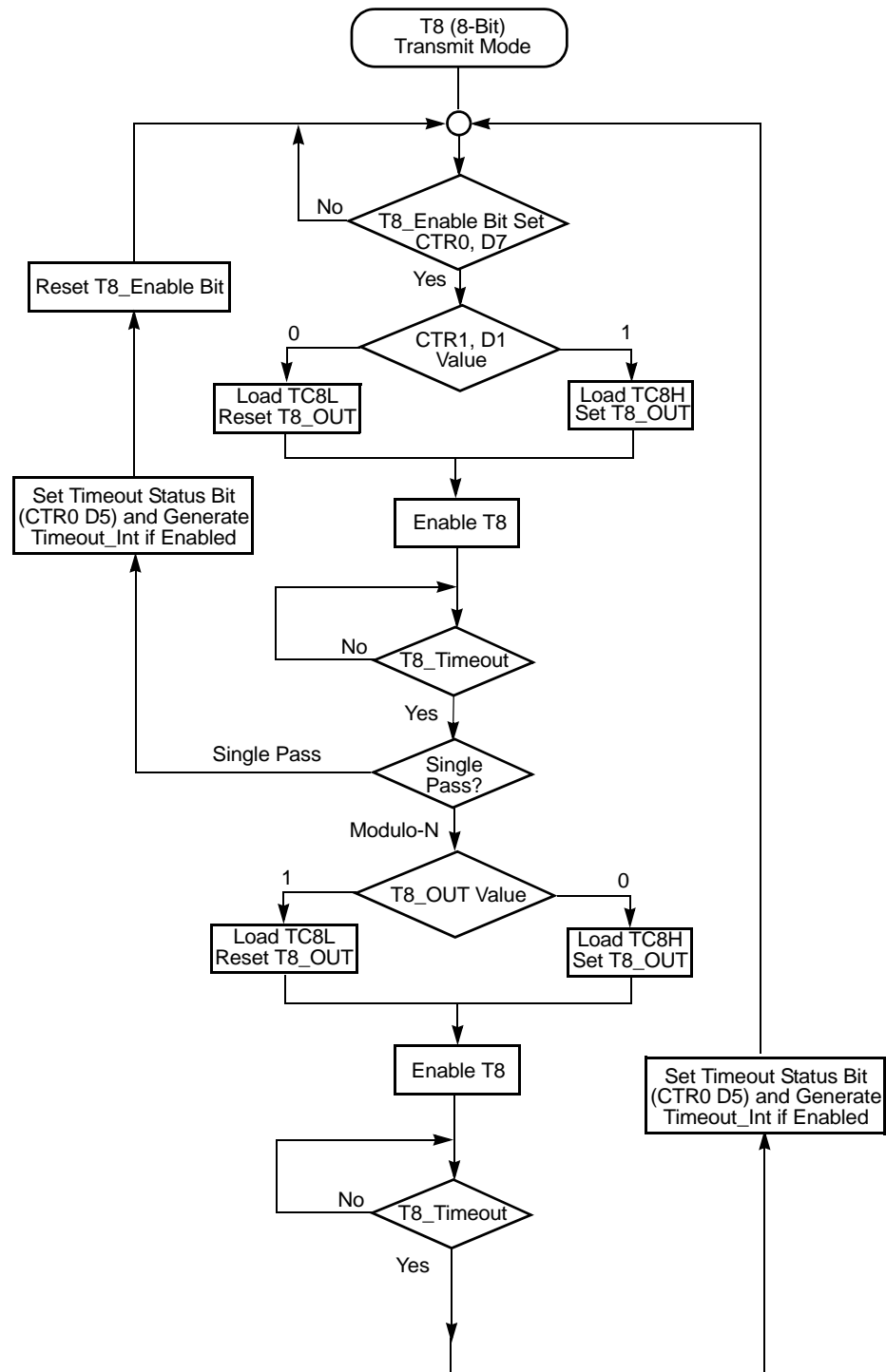


Figure 19. Transmit Mode Flowchart

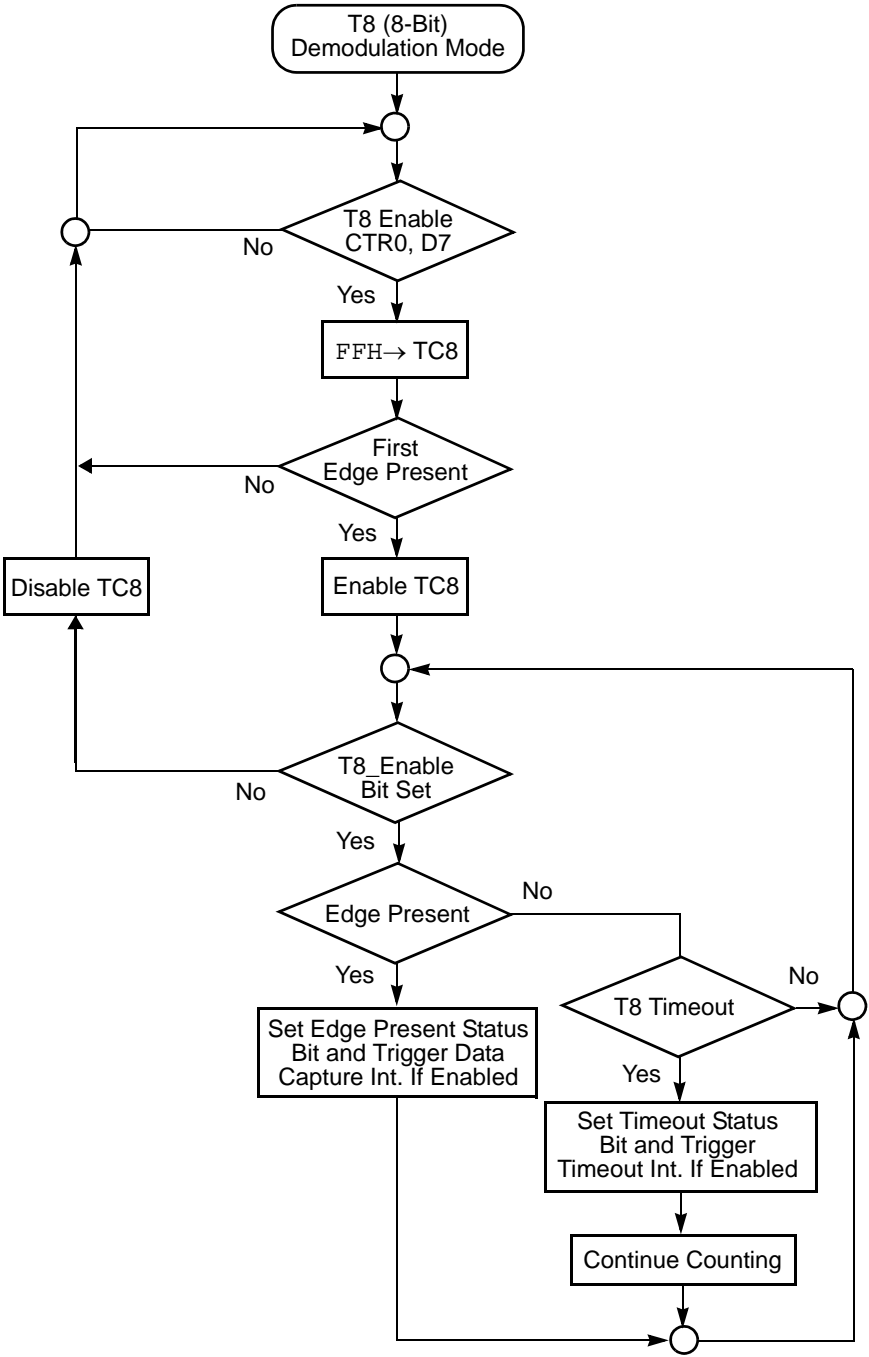


Figure 24. Demodulation Mode Flowchart



### **Port 0 Output Mode (D2)**

Bit 2 controls the output mode of port 0. A 1 in this location sets the output to push-pull, and a 0 sets the output to open-drain.

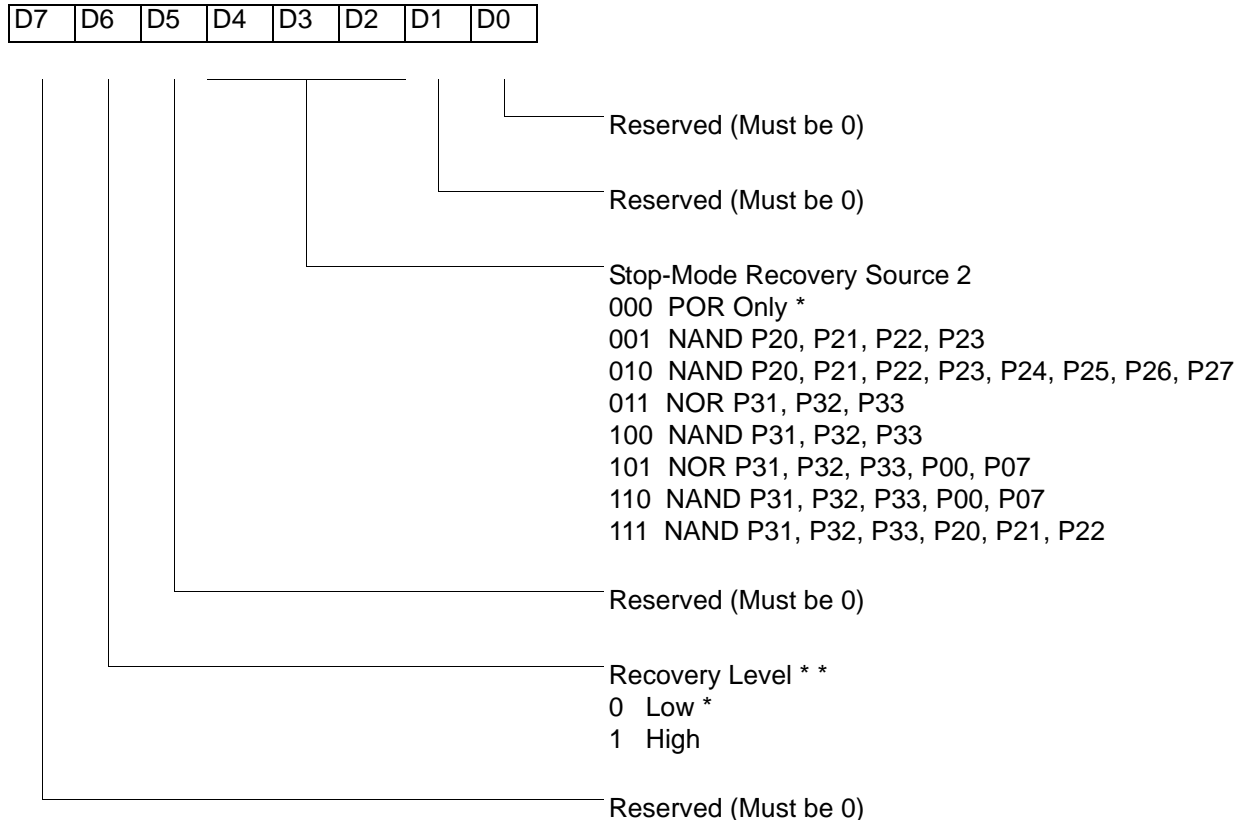
### **Stop-Mode Recovery Register (SMR)**

This register selects the clock divide value and determines the mode of Stop Mode Recovery (Figure 33). All bits are write only except bit 7, which is read only. Bit 7 is a flag bit that is hardware set on the condition of Stop recovery and reset by a power-on cycle. Bit 6 controls whether a low level or a high level at the XOR-gate input (Figure 35 on page 59) is required from the recovery source. Bit 5 controls the reset delay after recovery. Bits D2, D3, and D4 of the SMR register specify the source of the Stop Mode Recovery signal. Bits D0 determines if SCLK/TCLK are divided by 16 or not. The SMR is located in Bank F of the Expanded Register Group at address 0BH.

### Stop Mode Recovery Register 2 (SMR2)

This register determines the mode of Stop Mode Recovery for SMR2 (Figure 36).

SMR2(0F)DH



Note: If used in conjunction with SMR, either of the two specified events causes a Stop-Mode Recovery.

\* Default setting after reset

\*\* At the XOR gate input

**Figure 36. Stop Mode Recovery Register 2 ((0F)DH:D2–D4, D6 Write Only)**

If SMR2 is used in conjunction with SMR, either of the specified events causes a Stop Mode Recovery.

► **Note:** Port pins configured as outputs are ignored as an SMR or SMR2 recovery source. For example, if the NAND or P23–P20 is selected as the recovery source and P20 is configured as an output, the remaining SMR pins (P23–P21) form the NAND equation.



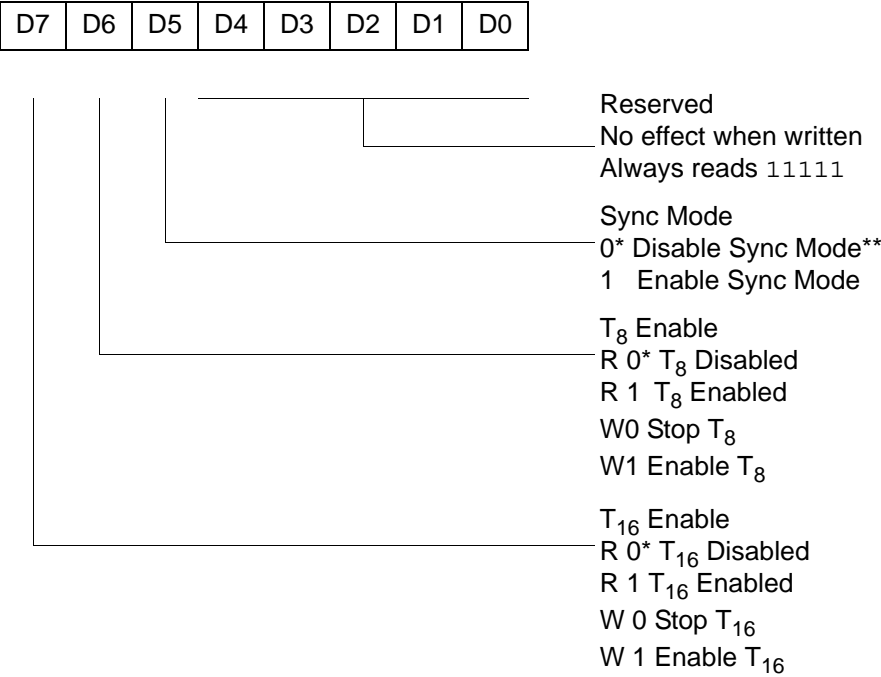


- **Notes:** Take care in differentiating the Transmit Mode from Demodulation Mode. Depending on which of these two modes is operating, the CTR1 bit has different functions.

Changing from one mode to another cannot be performed without disabling the counter/timers.



CTR3(0D)03H

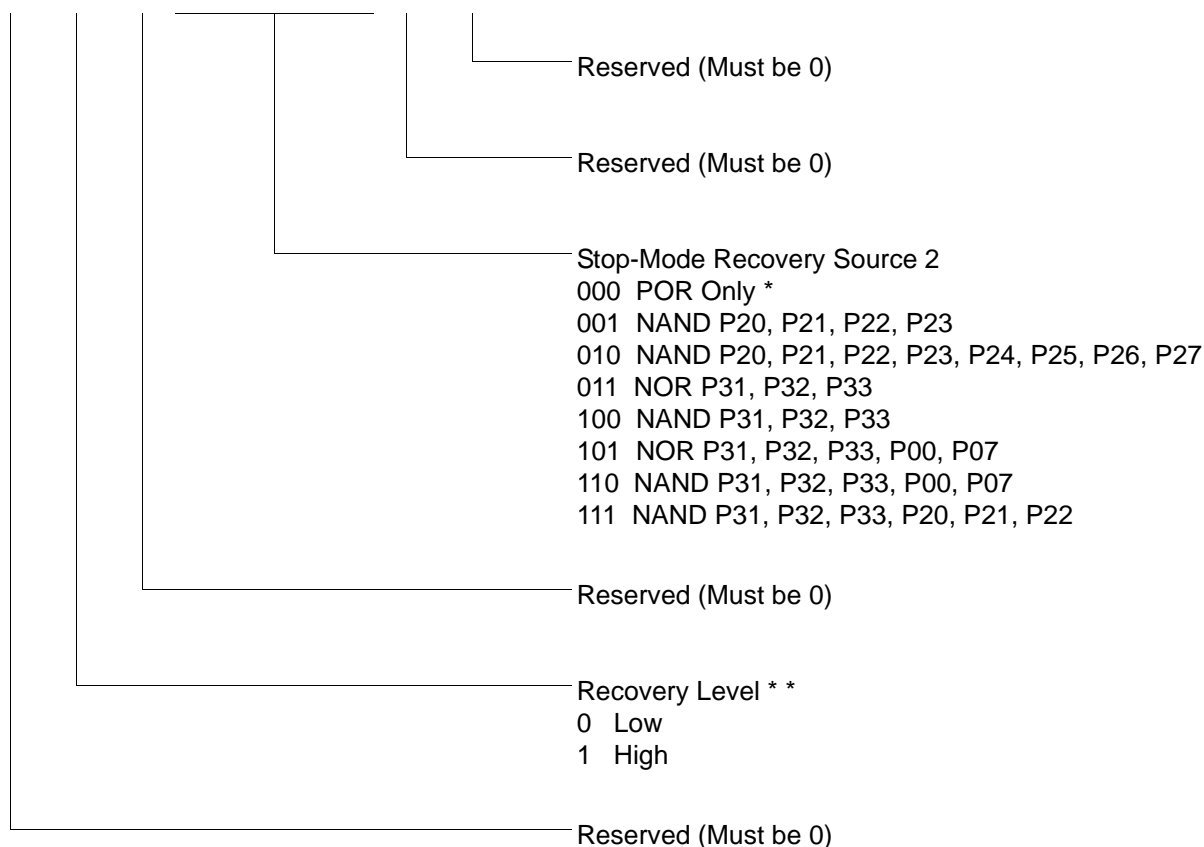


\* Default setting after reset.  
\*\* Default setting after reset. Not reset with a Stop Mode recovery.

Figure 42. T8/T16 Control Register (0D)03H: Read/Write (Except Where Noted)

SMR2(0F)0DH

D7	D6	D5	D4	D3	D2	D1	D0
----	----	----	----	----	----	----	----



Note: If used in conjunction with SMR, either of the two specified events causes a Stop-Mode Recovery.

\* Default setting after reset. Not reset with a Stop Mode recovery.

\* \* At the XOR gate input

**Figure 46. Stop Mode Recovery Register 2 ((0F)0DH:D2–D4, D6 Write Only)**

R250 IRQ(FAH)

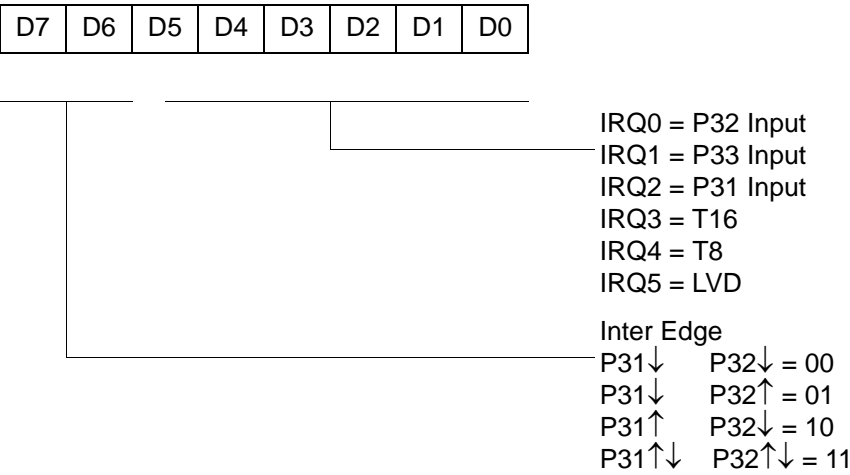


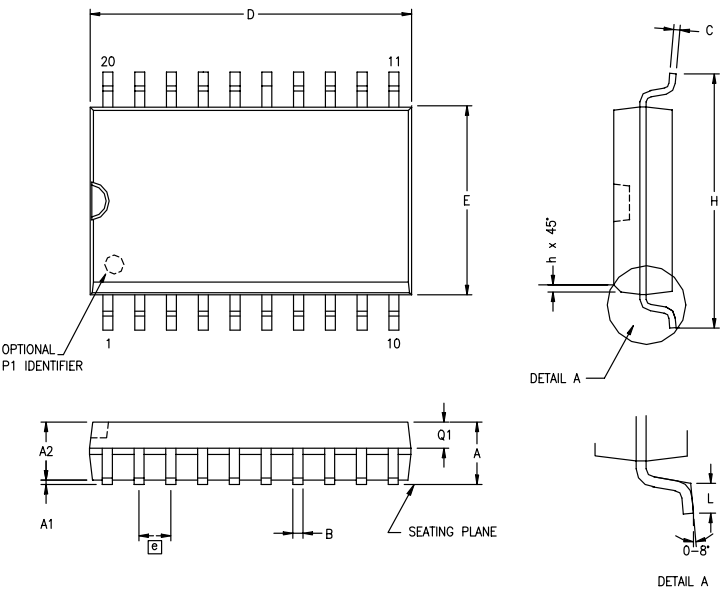
Figure 52. Interrupt Request Register (FAH: Read/Write)

R251 IMR(FBH)



\* Default setting after reset  
\* \* Only by using EI, DI instruction; DI is required before changing the IMR register

Figure 53. Interrupt Mask Register (FBH: Read/Write)



SYMBOL	MILLIMETER		INCH	
	MIN	MAX	MIN	MAX
A	2.40	2.65	.094	.104
A1	0.10	0.30	.004	.012
A2	2.24	2.44	.088	.096
B	0.36	0.46	.014	.018
C	0.23	0.30	.009	.012
D	12.60	12.95	.496	.510
E	7.40	7.60	.291	.299
G	1.27 BSC		.050 BSC	
H	10.00	10.65	.394	.419
h	0.30	0.40	.012	.016
L	0.60	1.00	.024	.039
Q1	0.97	1.07	.038	.042

CONTROLLING DIMENSIONS : MM  
LEADS ARE COPLANAR WITHIN .004 INCH.

Figure 60. 20-Pin SOIC Package Diagram