

Welcome to [E-XFL.COM](#)

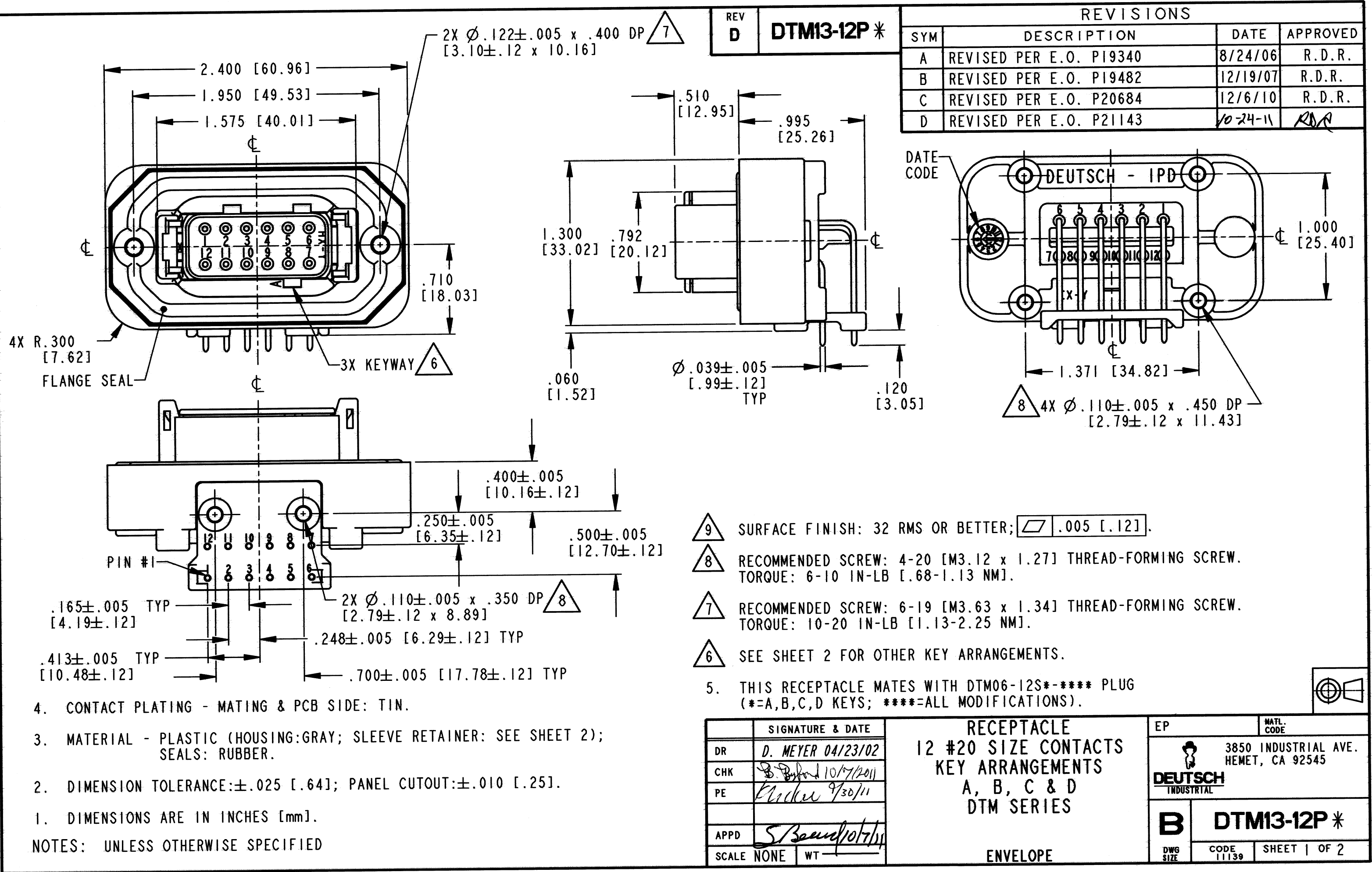
What is "[Embedded - Microcontrollers](#)"?

"[Embedded - Microcontrollers](#)" refer to small, integrated circuits designed to perform specific tasks within larger systems. These microcontrollers are essentially compact computers on a single chip, containing a processor core, memory, and programmable input/output peripherals. They are called "embedded" because they are embedded within electronic devices to control various functions, rather than serving as standalone computers. Microcontrollers are crucial in modern electronics, providing the intelligence and control needed for a wide range of applications.

Applications of "[Embedded - Microcontrollers](#)"

Details

Product Status	Active
Core Processor	ARM7®
Core Size	16/32-Bit
Speed	10MHz
Connectivity	I²C, SPI, UART/USART
Peripherals	POR, PWM, Temp Sensor, WDT
Number of I/O	8
Program Memory Size	32KB (16K x 16)
Program Memory Type	FLASH
EEPROM Size	-
RAM Size	1K x 32
Voltage - Supply (Vcc/Vdd)	2.375V ~ 2.625V
Data Converters	A/D 5x24b, 8x24b; D/A 1x14b
Oscillator Type	Internal
Operating Temperature	-40°C ~ 125°C (TA)
Mounting Type	Surface Mount
Package / Case	32-VFQFN Exposed Pad, CSP
Supplier Device Package	32-LFCSP-VQ (5x5)
Purchase URL	https://www.e-xfl.com/product-detail/analog-devices/aduc7061bcpz32-rl



REV
D

DTM13-12P *

REVISIONS			
SYM	DESCRIPTION	DATE	APPROVED
A	REVISED PER E.O. P19340	8/24/06	R.D.R.
B	REVISED PER E.O. P19482	12/19/07	R.D.R.
C	REVISED PER E.O. P20684	12/6/10	R.D.R.
D	REVISED PER E.O. P21143	10-24-11	RDR


- 9 SURFACE FINISH: 32 RMS OR BETTER; .005 [.12].
- 8 RECOMMENDED SCREW: 4-20 [M3.12 x 1.27] THREAD-FORMING SCREW. TORQUE: 6-10 IN-LB [.68-1.13 NM].
- 7 RECOMMENDED SCREW: 6-19 [M3.63 x 1.34] THREAD-FORMING SCREW. TORQUE: 10-20 IN-LB [1.13-2.25 NM].
- 6 SEE SHEET 2 FOR OTHER KEY ARRANGEMENTS.
5. THIS RECEPTACLE MATES WITH DTM06-12S*-**** PLUG
(* = A, B, C, D KEYS; **** = ALL MODIFICATIONS).

4. CONTACT PLATING - MATING & PCB SIDE: TIN.
3. MATERIAL - PLASTIC (HOUSING: GRAY; SLEEVE RETAINER: SEE SHEET 2); SEALS: RUBBER.
2. DIMENSION TOLERANCE: $\pm .025$ [.64]; PANEL CUTOUT: $\pm .010$ [.25].
1. DIMENSIONS ARE IN INCHES [mm].
- NOTES: UNLESS OTHERWISE SPECIFIED

SIGNATURE & DATE	
DR	D. MEYER 04/23/02
CHK	<i>[Signature]</i> 10/7/2011
PE	<i>[Signature]</i> 9/30/11
APPD	<i>[Signature]</i> 10/7/11
SCALE	NONE WT

RECEPTACLE
12 #20 SIZE CONTACTS
KEY ARRANGEMENTS
A, B, C & D
DTM SERIES

ENVELOPE

EP	MATL. CODE
 3850 INDUSTRIAL AVE. HEMET, CA 92545	
DEUTSCH INDUSTRIAL	
B	DTM13-12P *
DWG SIZE	CODE 11139 SHEET 1 OF 2

