



Welcome to [E-XFL.COM](https://www.e-xfl.com)

Understanding [Embedded - FPGAs \(Field Programmable Gate Array\)](#)

Embedded - FPGAs, or Field Programmable Gate Arrays, are advanced integrated circuits that offer unparalleled flexibility and performance for digital systems. Unlike traditional fixed-function logic devices, FPGAs can be programmed and reprogrammed to execute a wide array of logical operations, enabling customized functionality tailored to specific applications. This reprogrammability allows developers to iterate designs quickly and implement complex functions without the need for custom hardware.

Applications of Embedded - FPGAs

The versatility of Embedded - FPGAs makes them indispensable in numerous fields. In telecommunications.

Details

| | |
|--------------------------------|---|
| Product Status | Obsolete |
| Number of LABs/CLBs | 135840 |
| Number of Logic Elements/Cells | 360000 |
| Total RAM Bits | 19456000 |
| Number of I/O | 360 |
| Number of Gates | - |
| Voltage - Supply | 0.82V ~ 0.88V |
| Mounting Type | Surface Mount |
| Operating Temperature | -40°C ~ 100°C (TJ) |
| Package / Case | 780-BBGA, FCBGA |
| Supplier Device Package | 780-HBGA (33x33) |
| Purchase URL | https://www.e-xfl.com/product-detail/intel/5sgsmd4e3h29i3n |

Table 1. Stratix V GX and GS Commercial and Industrial Speed Grade Offering ^{(1), (2), (3)} (Part 2 of 2)

| Transceiver Speed Grade | Core Speed Grade | | | | | | | |
|--------------------------|------------------|---------|-----|-----|---------|---------|--------------------|-----|
| | C1 | C2, C2L | C3 | C4 | I2, I2L | I3, I3L | I3YY | I4 |
| 3 GX channel—8.5 Gbps | — | Yes | Yes | Yes | — | Yes | Yes ⁽⁴⁾ | Yes |

Notes to Table 1:

- (1) C = Commercial temperature grade; I = Industrial temperature grade.
 (2) Lower number refers to faster speed grade.
 (3) C2L, I2L, and I3L speed grades are for low-power devices.
 (4) I3YY speed grades can achieve up to 10.3125 Gbps.

Table 2 lists the industrial and commercial speed grades for the Stratix V GT devices.

Table 2. Stratix V GT Commercial and Industrial Speed Grade Offering ^{(1), (2)}

| Transceiver Speed Grade | Core Speed Grade | | | |
|--|------------------|-----|-----|-----|
| | C1 | C2 | I2 | I3 |
| 2 GX channel—12.5 Gbps GT channel—28.05 Gbps | Yes | Yes | — | — |
| 3 GX channel—12.5 Gbps GT channel—25.78 Gbps | Yes | Yes | Yes | Yes |

Notes to Table 2:

- (1) C = Commercial temperature grade; I = Industrial temperature grade.
 (2) Lower number refers to faster speed grade.

Absolute Maximum Ratings

Absolute maximum ratings define the maximum operating conditions for Stratix V devices. The values are based on experiments conducted with the devices and theoretical modeling of breakdown and damage mechanisms. The functional operation of the device is not implied for these conditions.



Conditions other than those listed in Table 3 may cause permanent damage to the device. Additionally, device operation at the absolute maximum ratings for extended periods of time may have adverse effects on the device.

Table 3. Absolute Maximum Ratings for Stratix V Devices (Part 1 of 2)

| Symbol | Description | Minimum | Maximum | Unit |
|---------------------|--|---------|---------|------|
| V _{CC} | Power supply for core voltage and periphery circuitry | −0.5 | 1.35 | V |
| V _{CCPT} | Power supply for programmable power technology | −0.5 | 1.8 | V |
| V _{CCPGM} | Power supply for configuration pins | −0.5 | 3.9 | V |
| V _{CC_AUX} | Auxiliary supply for the programmable power technology | −0.5 | 3.4 | V |
| V _{CCBAT} | Battery back-up power supply for design security volatile key register | −0.5 | 3.9 | V |
| V _{CCPD} | I/O pre-driver power supply | −0.5 | 3.9 | V |
| V _{CCIO} | I/O power supply | −0.5 | 3.9 | V |

Table 5 lists the maximum allowed input overshoot voltage and the duration of the overshoot voltage as a percentage of device lifetime. The maximum allowed overshoot duration is specified as a percentage of high time over the lifetime of the device. A DC signal is equivalent to 100% of the duty cycle. For example, a signal that overshoots to 3.95 V can be at 3.95 V for only ~21% over the lifetime of the device; for a device lifetime of 10 years, the overshoot duration amounts to ~2 years.

Table 5. Maximum Allowed Overshoot During Transitions

| Symbol | Description | Condition (V) | Overshoot Duration as % @ $T_J = 100^\circ\text{C}$ | Unit |
|------------|------------------|---------------|--|------|
| V_i (AC) | AC input voltage | 3.8 | 100 | % |
| | | 3.85 | 64 | % |
| | | 3.9 | 36 | % |
| | | 3.95 | 21 | % |
| | | 4 | 12 | % |
| | | 4.05 | 7 | % |
| | | 4.1 | 4 | % |
| | | 4.15 | 2 | % |
| | | 4.2 | 1 | % |

Figure 1. Stratix V Device Overshoot Duration



Recommended Operating Conditions

This section lists the functional operating limits for the AC and DC parameters for Stratix V devices. Table 6 lists the steady-state voltage and current values expected from Stratix V devices. Power supply ramps must all be strictly monotonic, without plateaus.

Table 6. Recommended Operating Conditions for Stratix V Devices (Part 1 of 2)

| Symbol | Description | Condition | Min ⁽⁴⁾ | Typ | Max ⁽⁴⁾ | Unit |
|-----------------------------------|---|------------|--------------------|------|--------------------|------|
| V _{CC} | Core voltage and periphery circuitry power supply (C1, C2, I2, and I3YY speed grades) | — | 0.87 | 0.9 | 0.93 | V |
| | Core voltage and periphery circuitry power supply (C2L, C3, C4, I2L, I3, I3L, and I4 speed grades) ⁽³⁾ | — | 0.82 | 0.85 | 0.88 | V |
| V _{CCPT} | Power supply for programmable power technology | — | 1.45 | 1.50 | 1.55 | V |
| V _{CC_AUX} | Auxiliary supply for the programmable power technology | — | 2.375 | 2.5 | 2.625 | V |
| V _{CCPD} ⁽¹⁾ | I/O pre-driver (3.0 V) power supply | — | 2.85 | 3.0 | 3.15 | V |
| | I/O pre-driver (2.5 V) power supply | — | 2.375 | 2.5 | 2.625 | V |
| V _{CCIO} | I/O buffers (3.0 V) power supply | — | 2.85 | 3.0 | 3.15 | V |
| | I/O buffers (2.5 V) power supply | — | 2.375 | 2.5 | 2.625 | V |
| | I/O buffers (1.8 V) power supply | — | 1.71 | 1.8 | 1.89 | V |
| | I/O buffers (1.5 V) power supply | — | 1.425 | 1.5 | 1.575 | V |
| | I/O buffers (1.35 V) power supply | — | 1.283 | 1.35 | 1.45 | V |
| | I/O buffers (1.25 V) power supply | — | 1.19 | 1.25 | 1.31 | V |
| | I/O buffers (1.2 V) power supply | — | 1.14 | 1.2 | 1.26 | V |
| V _{CCPGM} | Configuration pins (3.0 V) power supply | — | 2.85 | 3.0 | 3.15 | V |
| | Configuration pins (2.5 V) power supply | — | 2.375 | 2.5 | 2.625 | V |
| | Configuration pins (1.8 V) power supply | — | 1.71 | 1.8 | 1.89 | V |
| V _{CCA_FPLL} | PLL analog voltage regulator power supply | — | 2.375 | 2.5 | 2.625 | V |
| V _{CCD_FPLL} | PLL digital voltage regulator power supply | — | 1.45 | 1.5 | 1.55 | V |
| V _{CCBAT} ⁽²⁾ | Battery back-up power supply (For design security volatile key register) | — | 1.2 | — | 3.0 | V |
| V _I | DC input voltage | — | −0.5 | — | 3.6 | V |
| V _O | Output voltage | — | 0 | — | V _{CCIO} | V |
| T _J | Operating junction temperature | Commercial | 0 | — | 85 | °C |
| | | Industrial | −40 | — | 100 | °C |

Table 7. Recommended Transceiver Power Supply Operating Conditions for Stratix V GX, GS, and GT Devices (Part 2 of 2)

| Symbol | Description | Devices | Minimum ⁽⁴⁾ | Typical | Maximum ⁽⁴⁾ | Unit |
|------------------------|--|------------|------------------------|---------|------------------------|------|
| V_{CCR_GXBR} (2) | Receiver analog power supply (right side) | GX, GS, GT | 0.82 | 0.85 | 0.88 | V |
| | | | 0.87 | 0.90 | 0.93 | |
| | | | 0.97 | 1.0 | 1.03 | |
| | | | 1.03 | 1.05 | 1.07 | |
| V_{CCR_GTBR} | Receiver analog power supply for GT channels (right side) | GT | 1.02 | 1.05 | 1.08 | V |
| V_{CCT_GXBL} (2) | Transmitter analog power supply (left side) | GX, GS, GT | 0.82 | 0.85 | 0.88 | V |
| | | | 0.87 | 0.90 | 0.93 | |
| | | | 0.97 | 1.0 | 1.03 | |
| | | | 1.03 | 1.05 | 1.07 | |
| V_{CCT_GXBR} (2) | Transmitter analog power supply (right side) | GX, GS, GT | 0.82 | 0.85 | 0.88 | V |
| | | | 0.87 | 0.90 | 0.93 | |
| | | | 0.97 | 1.0 | 1.03 | |
| | | | 1.03 | 1.05 | 1.07 | |
| V_{CCT_GTBR} | Transmitter analog power supply for GT channels (right side) | GT | 1.02 | 1.05 | 1.08 | V |
| V_{CCL_GTBR} | Transmitter clock network power supply | GT | 1.02 | 1.05 | 1.08 | V |
| V_{CCH_GXBL} | Transmitter output buffer power supply (left side) | GX, GS, GT | 1.425 | 1.5 | 1.575 | V |
| V_{CCH_GXBR} | Transmitter output buffer power supply (right side) | GX, GS, GT | 1.425 | 1.5 | 1.575 | V |

Notes to Table 7:

- (1) This supply must be connected to 3.0 V if the CMU PLL, receiver CDR, or both, are configured at a base data rate > 6.5 Gbps. Up to 6.5 Gbps, you can connect this supply to either 3.0 V or 2.5 V.
- (2) Refer to Table 8 to select the correct power supply level for your design.
- (3) When using ATX PLLs, the supply must be 3.0 V.
- (4) This value describes the budget for the DC (static) power supply tolerance and does not include the dynamic tolerance requirements. Refer to the PDN tool for the additional budget for the dynamic tolerance requirements.

Table 12. OCT Without Calibration Resistance Tolerance Specifications for Stratix V Devices (Part 2 of 2)

| Symbol | Description | Conditions | Resistance Tolerance | | | | Unit |
|----------------------|--|-----------------------------------|----------------------|--------|--------------|--------|------|
| | | | C1 | C2, I2 | C3, I3, I3YY | C4, I4 | |
| 50-Ω R _S | Internal series termination without calibration (50-Ω setting) | V _{CCIO} = 1.8 and 1.5 V | ±30 | ±30 | ±40 | ±40 | % |
| 50-Ω R _S | Internal series termination without calibration (50-Ω setting) | V _{CCIO} = 1.2 V | ±35 | ±35 | ±50 | ±50 | % |
| 100-Ω R _D | Internal differential termination (100-Ω setting) | V _{CCPD} = 2.5 V | ±25 | ±25 | ±25 | ±25 | % |

Calibration accuracy for the calibrated series and parallel OCTs are applicable at the moment of calibration. When voltage and temperature conditions change after calibration, the tolerance may change.

OCT calibration is automatically performed at power-up for OCT-enabled I/Os. Table 13 lists the OCT variation with temperature and voltage after power-up calibration. Use Table 13 to determine the OCT variation after power-up calibration and Equation 1 to determine the OCT variation without recalibration.

Equation 1. OCT Variation Without Recalibration for Stratix V Devices ^{(1), (2), (3), (4), (5), (6)}

$$R_{OCT} = R_{SCAL} \left(1 + \left\langle \frac{dR}{dT} \times \Delta T \right\rangle \pm \left\langle \frac{dR}{dV} \times \Delta V \right\rangle \right)$$

Notes to Equation 1:

- (1) The R_{OCT} value shows the range of OCT resistance with the variation of temperature and V_{CCIO}.
- (2) R_{SCAL} is the OCT resistance value at power-up.
- (3) ΔT is the variation of temperature with respect to the temperature at power-up.
- (4) ΔV is the variation of voltage with respect to the V_{CCIO} at power-up.
- (5) dR/dT is the percentage change of R_{SCAL} with temperature.
- (6) dR/dV is the percentage change of R_{SCAL} with voltage.

Table 13 lists the on-chip termination variation after power-up calibration.

Table 13. OCT Variation after Power-Up Calibration for Stratix V Devices (Part 1 of 2) ⁽¹⁾

| Symbol | Description | V _{CCIO} (V) | Typical | Unit |
|--------|--|-----------------------|---------|--------|
| dR/dV | OCT variation with voltage without recalibration | 3.0 | 0.0297 | % / mV |
| | | 2.5 | 0.0344 | |
| | | 1.8 | 0.0499 | |
| | | 1.5 | 0.0744 | |
| | | 1.2 | 0.1241 | |

Table 13. OCT Variation after Power-Up Calibration for Stratix V Devices (Part 2 of 2) ⁽¹⁾

| Symbol | Description | V _{CCIO} (V) | Typical | Unit |
|--------|--|-----------------------|---------|-------------------|
| dR/dT | OCT variation with temperature without recalibration | 3.0 | 0.189 | %/ ^o C |
| | | 2.5 | 0.208 | |
| | | 1.8 | 0.266 | |
| | | 1.5 | 0.273 | |
| | | 1.2 | 0.317 | |

Note to Table 13:

(1) Valid for a V_{CCIO} range of $\pm 5\%$ and a temperature range of 0° to 85°C.

Pin Capacitance

Table 14 lists the Stratix V device family pin capacitance.

Table 14. Pin Capacitance for Stratix V Devices

| Symbol | Description | Value | Unit |
|--------------------|--|-------|------|
| C _{IOTB} | Input capacitance on the top and bottom I/O pins | 6 | pF |
| C _{IOLR} | Input capacitance on the left and right I/O pins | 6 | pF |
| C _{OUTFB} | Input capacitance on dual-purpose clock output and feedback pins | 6 | pF |

Hot Socketing

Table 15 lists the hot socketing specifications for Stratix V devices.

Table 15. Hot Socketing Specifications for Stratix V Devices

| Symbol | Description | Maximum |
|---------------------------|--|---------------------|
| I _{IOPIN} (DC) | DC current per I/O pin | 300 μ A |
| I _{IOPIN} (AC) | AC current per I/O pin | 8 mA ⁽¹⁾ |
| I _{XCVR-TX} (DC) | DC current per transceiver transmitter pin | 100 mA |
| I _{XCVR-RX} (DC) | DC current per transceiver receiver pin | 50 mA |

Note to Table 15:

(1) The I/O ramp rate is 10 ns or more. For ramp rates faster than 10 ns, $|I_{IOPIN}| = C \, dv/dt$, in which C is the I/O pin capacitance and dv/dt is the slew rate.

Table 21. Differential HSTL and HSUL I/O Standards for Stratix V Devices (Part 2 of 2)

| I/O Standard | V _{CCIO} (V) | | | V _{DIF(DC)} (V) | | V _{X(AC)} (V) | | | V _{CM(DC)} (V) | | | V _{DIF(AC)} (V) | |
|---------------------|-----------------------|-----|------|--------------------------|-------------------------|------------------------------|---------------------------|------------------------------|---------------------------|---------------------------|---------------------------|--------------------------|--------------------------|
| | Min | Typ | Max | Min | Max | Min | Typ | Max | Min | Typ | Max | Min | Max |
| HSTL-12 Class I, II | 1.14 | 1.2 | 1.26 | 0.16 | V _{CCIO} + 0.3 | — | 0.5* V _{CCIO} | — | 0.4* V _{CCIO} | 0.5* V _{CCIO} | 0.6* V _{CCIO} | 0.3 | V _{CCIO} + 0.48 |
| HSUL-12 | 1.14 | 1.2 | 1.3 | 0.26 | 0.26 | 0.5*V _{CCIO} – 0.12 | 0.5* V _{CCIO} | 0.5*V _{CCIO} + 0.12 | 0.4* V _{CCIO} | 0.5* V _{CCIO} | 0.6* V _{CCIO} | 0.44 | 0.44 |

Table 22. Differential I/O Standard Specifications for Stratix V Devices ⁽⁷⁾

| I/O Standard | V _{CCIO} (V) ⁽¹⁰⁾ | | | V _{ID} (mV) ⁽⁸⁾ | | | V _{ICM(DC)} (V) | | | V _{OD} (V) ⁽⁶⁾ | | | V _{OCM} (V) ⁽⁶⁾ | | |
|--------------------------------|--|-----|-------|-------------------------------------|--------------------------|-----|--------------------------|-----------------------------|-------|------------------------------------|-----|-----|-------------------------------------|------|-------|
| | Min | Typ | Max | Min | Condition | Max | Min | Condition | Max | Min | Typ | Max | Min | Typ | Max |
| PCML | Transmitter, receiver, and input reference clock pins of the high-speed transceivers use the PCML I/O standard. For transmitter, receiver, and reference clock I/O pin specifications, refer to Table 23 on page 18. | | | | | | | | | | | | | | |
| 2.5 V LVDS ⁽¹⁾ | 2.375 | 2.5 | 2.625 | 100 | V _{CM} = 1.25 V | — | 0.05 | D _{MAX} ≤ 700 Mbps | 1.8 | 0.247 | — | 0.6 | 1.125 | 1.25 | 1.375 |
| | | | | | | — | 1.05 | D _{MAX} > 700 Mbps | 1.55 | 0.247 | — | 0.6 | 1.125 | 1.25 | 1.375 |
| BLVDS ⁽⁵⁾ | 2.375 | 2.5 | 2.625 | 100 | — | — | — | — | — | — | — | — | — | — | — |
| RSDS (HIO) ⁽²⁾ | 2.375 | 2.5 | 2.625 | 100 | V _{CM} = 1.25 V | — | 0.3 | — | 1.4 | 0.1 | 0.2 | 0.6 | 0.5 | 1.2 | 1.4 |
| Mini-LVDS (HIO) ⁽³⁾ | 2.375 | 2.5 | 2.625 | 200 | — | 600 | 0.4 | — | 1.325 | 0.25 | — | 0.6 | 1 | 1.2 | 1.4 |
| LVPECL ^{(4), (9)} | — | — | — | 300 | — | — | 0.6 | D _{MAX} ≤ 700 Mbps | 1.8 | — | — | — | — | — | — |
| | — | — | — | 300 | — | — | 1 | D _{MAX} > 700 Mbps | 1.6 | — | — | — | — | — | — |

Notes to Table 22:

- (1) For optimized LVDS receiver performance, the receiver voltage input range must be between 1.0 V to 1.6 V for data rates above 700 Mbps, and 0 V to 1.85 V for data rates below 700 Mbps.
- (2) For optimized RSDS receiver performance, the receiver voltage input range must be between 0.25 V to 1.45 V.
- (3) For optimized Mini-LVDS receiver performance, the receiver voltage input range must be between 0.3 V to 1.425 V.
- (4) For optimized LVPECL receiver performance, the receiver voltage input range must be between 0.85 V to 1.75 V for data rate above 700 Mbps and 0.45 V to 1.95 V for data rate below 700 Mbps.
- (5) There are no fixed V_{ICM}, V_{OD}, and V_{OCM} specifications for BLVDS. They depend on the system topology.
- (6) RL range: 90 ≤ RL ≤ 110 Ω.
- (7) The 1.4-V and 1.5-V PCML transceiver I/O standard specifications are described in “Transceiver Performance Specifications” on page 18.
- (8) The minimum V_{ID} value is applicable over the entire common mode range, V_{CM}.
- (9) LVPECL is only supported on dedicated clock input pins.
- (10) Differential inputs are powered by VCCPD which requires 2.5 V.

Power Consumption

Altera offers two ways to estimate power consumption for a design—the Excel-based Early Power Estimator and the Quartus® II PowerPlay Power Analyzer feature.



-  You typically use the interactive Excel-based Early Power Estimator before designing the FPGA to get a magnitude estimate of the device power. The Quartus II PowerPlay Power Analyzer provides better quality estimates based on the specifics of the design after you complete place-and-route. The PowerPlay Power Analyzer can apply a combination of user-entered, simulation-derived, and estimated signal activities that, when combined with detailed circuit models, yields very accurate power estimates.
-  For more information about power estimation tools, refer to the *PowerPlay Early Power Estimator User Guide* and the *PowerPlay Power Analysis* chapter in the *Quartus II Handbook*.

Table 23. Transceiver Specifications for Stratix V GX and GS Devices ⁽¹⁾ (Part 7 of 7)

| Symbol/ Description | Conditions | Transceiver Speed Grade 1 | | | Transceiver Speed Grade 2 | | | Transceiver Speed Grade 3 | | | Unit |
|------------------------|------------|------------------------------|-----|-----|------------------------------|-----|-----|------------------------------|-----|-----|------|
| | | Min | Typ | Max | Min | Typ | Max | Min | Typ | Max | |
| $t_{pll_lock}^{(16)}$ | — | — | — | 10 | — | — | 10 | — | — | 10 | μs |

Notes to Table 23:

- (1) Speed grades shown in Table 23 refer to the PMA Speed Grade in the device ordering code. The maximum data rate could be restricted by the Core/PCS speed grade. Contact your Altera Sales Representative for the maximum data rate specifications in each speed grade combination offered. For more information about device ordering codes, refer to the *Stratix V Device Overview*.
- (2) The reference clock common mode voltage is equal to the V_{CCR_GXB} power supply level.
- (3) This supply must be connected to 1.0 V if the transceiver is configured at a data rate > 6.5 Gbps, and to 1.05 V if configured at a data rate > 10.3 Gbps when DFE is used. For data rates up to 6.5 Gbps, you can connect this supply to 0.85 V.
- (4) This supply follows $VCCR_GXB$.
- (5) The device cannot tolerate prolonged operation at this absolute maximum.
- (6) The differential eye opening specification at the receiver input pins assumes that **Receiver Equalization** is disabled. If you enable **Receiver Equalization**, the receiver circuitry can tolerate a lower minimum eye opening, depending on the equalization level.
- (7) The Quartus II software automatically selects the appropriate slew rate depending on the configured data rate or functional mode.
- (8) The input reference clock frequency options depend on the data rate and the device speed grade.
- (9) The line data rate may be limited by PCS-FPGA interface speed grade.
- (10) Refer to Figure 1 for the GX channel AC gain curves. The total effective AC gain is the AC gain minus the DC gain.
- (11) t_{LTR} is the time required for the receive CDR to lock to the input reference clock frequency after coming out of reset.
- (12) t_{LTD} is time required for the receiver CDR to start recovering valid data after the rx_is_lockedtodata signal goes high.
- (13) t_{LTD_manual} is the time required for the receiver CDR to start recovering valid data after the rx_is_lockedtodata signal goes high when the CDR is functioning in the manual mode.
- (14) $t_{LTR_LTD_manual}$ is the time the receiver CDR must be kept in lock to reference (LTR) mode after the rx_is_lockedtoref signal goes high when the CDR is functioning in the manual mode.
- (15) $t_{pll_powerdown}$ is the PLL powerdown minimum pulse width.
- (16) t_{pll_lock} is the time required for the transmitter CMU/ATX PLL to lock to the input reference clock frequency after coming out of reset.
- (17) To calculate the REFCLK rms phase jitter requirement for PCIe at reference clock frequencies other than 100 MHz, use the following formula: REFCLK rms phase jitter at f(MHz) = REFCLK rms phase jitter at 100 MHz \times 100/f.
- (18) The maximum peak to peak differential input voltage V_{ID} after device configuration is equal to $4 \times (\text{absolute } V_{MAX} \text{ for receiver pin} - V_{ICM})$.
- (19) For ES devices, R_{REF} is $2000 \Omega \pm 1\%$.
- (20) To calculate the REFCLK phase noise requirement at frequencies other than 622 MHz, use the following formula: REFCLK phase noise at f(MHz) = REFCLK phase noise at 622 MHz + $20 \times \log(f/622)$.
- (21) SFP/+ optical modules require the host interface to have RD+/- differentially terminated with 100Ω . The internal OCT feature is available after the Stratix V FPGA configuration is completed. Altera recommends that FPGA configuration is completed before inserting the optical module. Otherwise, minimize unnecessary removal and insertion with unconfigured devices.
- (22) Refer to Figure 2.
- (23) For oversampling designs to support data rates less than the minimum specification, the CDR needs to be in LTR mode only.
- (24) I3YY devices can achieve data rates up to 10.3125 Gbps.
- (25) When you use fPLL as a TXPLL of the transceiver.
- (26) REFCLK performance requires to meet transmitter REFCLK phase noise specification.
- (27) Minimum eye opening of 85 mV is only for the unstressed input eye condition.

Figure 2 shows the differential transmitter output waveform.

Figure 2. Differential Transmitter Output Waveform



Figure 3 shows the Stratix V AC gain curves for GX channels.

Figure 3. AC Gain Curves for GX Channels (full bandwidth)



Stratix V GT devices contain both GX and GT channels. All transceiver specifications for the GX channels not listed in Table 28 are the same as those listed in Table 23.

Table 28 lists the Stratix V GT transceiver specifications.

- XFI
- ASI
- HiGig/HiGig+
- HiGig2/HiGig2+
- Serial Data Converter (SDC)
- GPON
- SDI
- SONET
- Fibre Channel (FC)
- PCIe
- QPI
- SFF-8431

Download the Stratix V Characterization Report Tool to view the characterization report summary for these protocols.

Core Performance Specifications

This section describes the clock tree, phase-locked loop (PLL), digital signal processing (DSP), memory blocks, configuration, and JTAG specifications.

Clock Tree Specifications

Table 30 lists the clock tree specifications for Stratix V devices.

Table 30. Clock Tree Performance for Stratix V Devices ⁽¹⁾

| Symbol | Performance | | | Unit |
|---------------------------|--------------------------|-----------------------|--------|------|
| | C1, C2, C2L, I2, and I2L | C3, I3, I3L, and I3YY | C4, I4 | |
| Global and Regional Clock | 717 | 650 | 580 | MHz |
| Periphery Clock | 550 | 500 | 500 | MHz |

Note to Table 30:

(1) The Stratix V ES devices are limited to 600 MHz core clock tree performance.

PLL Specifications

Table 31 lists the Stratix V PLL specifications when operating in both the commercial junction temperature range (0° to 85°C) and the industrial junction temperature range (–40° to 100°C).

Table 31. PLL Specifications for Stratix V Devices (Part 1 of 3)

| Symbol | Parameter | Min | Typ | Max | Unit |
|--------------------------|--|-----|-----|--------------------|------|
| f_{IN} | Input clock frequency (C1, C2, C2L, I2, and I2L speed grades) | 5 | — | 800 ⁽¹⁾ | MHz |
| | Input clock frequency (C3, I3, I3L, and I3YY speed grades) | 5 | — | 800 ⁽¹⁾ | MHz |
| | Input clock frequency (C4, I4 speed grades) | 5 | — | 650 ⁽¹⁾ | MHz |
| f_{INPFD} | Input frequency to the PFD | 5 | — | 325 | MHz |
| f_{FINPFD} | Fractional Input clock frequency to the PFD | 50 | — | 160 | MHz |
| f_{VCO} ⁽⁹⁾ | PLL VCO operating range (C1, C2, C2L, I2, I2L speed grades) | 600 | — | 1600 | MHz |
| | PLL VCO operating range (C3, I3, I3L, I3YY speed grades) | 600 | — | 1600 | MHz |
| | PLL VCO operating range (C4, I4 speed grades) | 600 | — | 1300 | MHz |
| $t_{EINDUTY}$ | Input clock or external feedback clock input duty cycle | 40 | — | 60 | % |
| f_{OUT} | Output frequency for an internal global or regional clock (C1, C2, C2L, I2, I2L speed grades) | — | — | 717 ⁽²⁾ | MHz |
| | Output frequency for an internal global or regional clock (C3, I3, I3L speed grades) | — | — | 650 ⁽²⁾ | MHz |
| | Output frequency for an internal global or regional clock (C4, I4 speed grades) | — | — | 580 ⁽²⁾ | MHz |
| f_{OUT_EXT} | Output frequency for an external clock output (C1, C2, C2L, I2, I2L speed grades) | — | — | 800 ⁽²⁾ | MHz |
| | Output frequency for an external clock output (C3, I3, I3L speed grades) | — | — | 667 ⁽²⁾ | MHz |
| | Output frequency for an external clock output (C4, I4 speed grades) | — | — | 553 ⁽²⁾ | MHz |
| $t_{OUTDUTY}$ | Duty cycle for a dedicated external clock output (when set to 50%) | 45 | 50 | 55 | % |
| t_{FCOMP} | External feedback clock compensation time | — | — | 10 | ns |
| $f_{DYCONFIGCLK}$ | Dynamic Configuration Clock used for <code>mgmt_clk</code> and <code>scanclk</code> | — | — | 100 | MHz |
| t_{LOCK} | Time required to lock from the end-of-device configuration or deassertion of <code>areset</code> | — | — | 1 | ms |
| t_{DLOCK} | Time required to lock dynamically (after switchover or reconfiguring any non-post-scale counters/delays) | — | — | 1 | ms |
| f_{CLBW} | PLL closed-loop low bandwidth | — | 0.3 | — | MHz |
| | PLL closed-loop medium bandwidth | — | 1.5 | — | MHz |
| | PLL closed-loop high bandwidth ⁽⁷⁾ | — | 4 | — | MHz |
| t_{PLL_PSERR} | Accuracy of PLL phase shift | — | — | ±50 | ps |
| t_{ARESET} | Minimum pulse width on the <code>areset</code> signal | 10 | — | — | ns |

Table 38. LVDS Soft-CDR/DPA Sinusoidal Jitter Mask Values for a Data Rate ≥ 1.25 Gbps

| Jitter Frequency (Hz) | | Sinusoidal Jitter (UI) |
|-----------------------|------------|------------------------|
| F1 | 10,000 | 25.000 |
| F2 | 17,565 | 25.000 |
| F3 | 1,493,000 | 0.350 |
| F4 | 50,000,000 | 0.350 |

Figure 9 shows the LVDS soft-CDR/DPA sinusoidal jitter tolerance specification for a data rate < 1.25 Gbps.

Figure 9. LVDS Soft-CDR/DPA Sinusoidal Jitter Tolerance Specification for a Data Rate < 1.25 Gbps

DLL Range, DQS Logic Block, and Memory Output Clock Jitter Specifications

Table 39 lists the DLL range specification for Stratix V devices. The DLL is always in 8-tap mode in Stratix V devices.

Table 39. DLL Range Specifications for Stratix V Devices ⁽¹⁾

| C1 | C2, C2L, I2, I2L | C3, I3, I3L, I3YY | C4,I4 | Unit |
|---------|------------------|-------------------|---------|------|
| 300-933 | 300-933 | 300-890 | 300-890 | MHz |

Note to Table 39:

- (1) Stratix V devices support memory interface frequencies lower than 300 MHz, although the reference clock that feeds the DLL must be at least 300 MHz. To support interfaces below 300 MHz, multiply the reference clock feeding the DLL to ensure the frequency is within the supported range of the DLL.

Table 40 lists the DQS phase offset delay per stage for Stratix V devices.

Table 40. DQS Phase Offset Delay Per Setting for Stratix V Devices ^{(1), (2)} (Part 1 of 2)

| Speed Grade | Min | Max | Unit |
|------------------|-----|-----|------|
| C1 | 8 | 14 | ps |
| C2, C2L, I2, I2L | 8 | 14 | ps |
| C3,I3, I3L, I3YY | 8 | 15 | ps |

Table 40. DQS Phase Offset Delay Per Setting for Stratix V Devices ^{(1), (2)} (Part 2 of 2)

| Speed Grade | Min | Max | Unit |
|-------------|-----|-----|------|
| C4,I4 | 8 | 16 | ps |

Notes to Table 40:

- (1) The typical value equals the average of the minimum and maximum values.
- (2) The delay settings are linear with a cumulative delay variation of 40 ps for all speed grades. For example, when using a –2 speed grade and applying a 10-phase offset setting to a 90° phase shift at 400 MHz, the expected average cumulative delay is $[625 \text{ ps} + (10 \times 10 \text{ ps}) \pm 20 \text{ ps}] = 725 \text{ ps} \pm 20 \text{ ps}$.

Table 41 lists the DQS phase shift error for Stratix V devices.

Table 41. DQS Phase Shift Error Specification for DLL-Delayed Clock ($t_{\text{DQS_PSERR}}$) for Stratix V Devices ⁽¹⁾

| Number of DQS Delay Buffers | C1 | C2, C2L, I2, I2L | C3, I3, I3L, I3YY | C4,I4 | Unit |
|-----------------------------|-----|------------------|-------------------|-------|------|
| 1 | 28 | 28 | 30 | 32 | ps |
| 2 | 56 | 56 | 60 | 64 | ps |
| 3 | 84 | 84 | 90 | 96 | ps |
| 4 | 112 | 112 | 120 | 128 | ps |

Notes to Table 41:

- (1) This error specification is the absolute maximum and minimum error. For example, skew on three DQS delay buffers in a –2 speed grade is $\pm 78 \text{ ps}$ or $\pm 39 \text{ ps}$.

Table 42 lists the memory output clock jitter specifications for Stratix V devices.

Table 42. Memory Output Clock Jitter Specification for Stratix V Devices ^{(1), (Part 1 of 2)} ^{(2), (3)}

| Clock Network | Parameter | Symbol | C1 | | C2, C2L, I2, I2L | | C3, I3, I3L, I3YY | | C4,I4 | | Unit |
|---------------|------------------------------|------------------------|------|-----|------------------|-----|-------------------|------|-------|------|------|
| | | | Min | Max | Min | Max | Min | Max | Min | Max | |
| Regional | Clock period jitter | $t_{\text{JIT(per)}}$ | –50 | 50 | –50 | 50 | –55 | 55 | –55 | 55 | ps |
| | Cycle-to-cycle period jitter | $t_{\text{JIT(cc)}}$ | –100 | 100 | –100 | 100 | –110 | 110 | –110 | 110 | ps |
| | Duty cycle jitter | $t_{\text{JIT(duty)}}$ | –50 | 50 | –50 | 50 | –82.5 | 82.5 | –82.5 | 82.5 | ps |
| Global | Clock period jitter | $t_{\text{JIT(per)}}$ | –75 | 75 | –75 | 75 | –82.5 | 82.5 | –82.5 | 82.5 | ps |
| | Cycle-to-cycle period jitter | $t_{\text{JIT(cc)}}$ | –150 | 150 | –150 | 150 | –165 | 165 | –165 | 165 | ps |
| | Duty cycle jitter | $t_{\text{JIT(duty)}}$ | –75 | 75 | –75 | 75 | –90 | 90 | –90 | 90 | ps |

Duty Cycle Distortion (DCD) Specifications

Table 44 lists the worst-case DCD for Stratix V devices.

Table 44. Worst-Case DCD on Stratix V I/O Pins ⁽¹⁾

| Symbol | C1 | | C2, C2L, I2, I2L | | C3, I3, I3L, I3YY | | C4, I4 | | Unit |
|-------------------|-----|-----|------------------|-----|-------------------|-----|--------|-----|------|
| | Min | Max | Min | Max | Min | Max | Min | Max | |
| Output Duty Cycle | 45 | 55 | 45 | 55 | 45 | 55 | 45 | 55 | % |

Note to Table 44:

(1) The DCD numbers do not cover the core clock network.

Configuration Specification

POR Delay Specification

Power-on reset (POR) delay is defined as the delay between the time when all the power supplies monitored by the POR circuitry reach the minimum recommended operating voltage to the time when the nSTATUS is released high and your device is ready to begin configuration.



For more information about the POR delay, refer to the *Hot Socketing and Power-On Reset in Stratix V Devices* chapter.

Table 45 lists the fast and standard POR delay specification.

Table 45. Fast and Standard POR Delay Specification ⁽¹⁾

| POR Delay | Minimum | Maximum |
|-----------|---------|---------|
| Fast | 4 ms | 12 ms |
| Standard | 100 ms | 300 ms |

Note to Table 45:

(1) You can select the POR delay based on the MSEL settings as described in the MSEL Pin Settings section of the “Configuration, Design Security, and Remote System Upgrades in Stratix V Devices” chapter.

JTAG Configuration Specifications

Table 46 lists the JTAG timing parameters and values for Stratix V devices.

Table 46. JTAG Timing Parameters and Values for Stratix V Devices

| Symbol | Description | Min | Max | Unit |
|-------------------------|------------------------------------|-----|-----|------|
| t _{JCP} | TCK clock period ⁽²⁾ | 30 | — | ns |
| t _{JCP} | TCK clock period ⁽²⁾ | 167 | — | ns |
| t _{JCH} | TCK clock high time ⁽²⁾ | 14 | — | ns |
| t _{JCL} | TCK clock low time ⁽²⁾ | 14 | — | ns |
| t _{JPSU (TDI)} | TDI JTAG port setup time | 2 | — | ns |
| t _{JPSU (TMS)} | TMS JTAG port setup time | 3 | — | ns |

Table 48. Minimum Configuration Time Estimation for Stratix V Devices

| Variant | Member Code | Active Serial ⁽¹⁾ | | | Fast Passive Parallel ⁽²⁾ | | |
|---------|-------------|------------------------------|------------|---------------------|--------------------------------------|------------|---------------------|
| | | Width | DCLK (MHz) | Min Config Time (s) | Width | DCLK (MHz) | Min Config Time (s) |
| GS | D3 | 4 | 100 | 0.344 | 32 | 100 | 0.043 |
| | D4 | 4 | 100 | 0.534 | 32 | 100 | 0.067 |
| | | 4 | 100 | 0.344 | 32 | 100 | 0.043 |
| | D5 | 4 | 100 | 0.534 | 32 | 100 | 0.067 |
| | D6 | 4 | 100 | 0.741 | 32 | 100 | 0.093 |
| | D8 | 4 | 100 | 0.741 | 32 | 100 | 0.093 |
| E | E9 | 4 | 100 | 0.857 | 32 | 100 | 0.107 |
| | EB | 4 | 100 | 0.857 | 32 | 100 | 0.107 |

Notes to Table 48:

- (1) DCLK frequency of 100 MHz using external CLKUSR.
 (2) Max FPGA FPP bandwidth may exceed bandwidth available from some external storage or control logic.

Fast Passive Parallel Configuration Timing

This section describes the fast passive parallel (FPP) configuration timing parameters for Stratix V devices.

DCLK-to-DATA[] Ratio for FPP Configuration

FPP configuration requires a different DCLK-to-DATA [] ratio when you enable the design security, decompression, or both features. Table 49 lists the DCLK-to-DATA [] ratio for each combination.

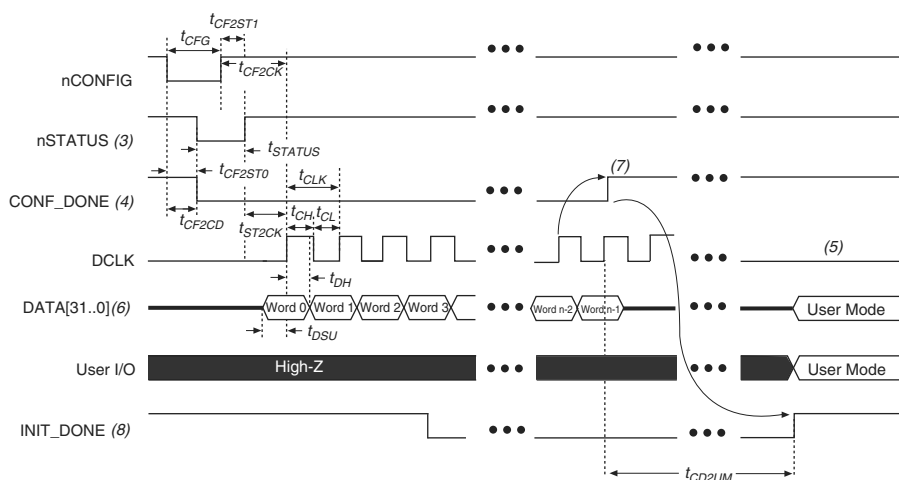
Table 49. DCLK-to-DATA[] Ratio ⁽¹⁾ (Part 1 of 2)

| Configuration Scheme | Decompression | Design Security | DCLK-to-DATA[] Ratio |
|----------------------|---------------|-----------------|----------------------|
| FPP ×8 | Disabled | Disabled | 1 |
| | Disabled | Enabled | 1 |
| | Enabled | Disabled | 2 |
| | Enabled | Enabled | 2 |
| FPP ×16 | Disabled | Disabled | 1 |
| | Disabled | Enabled | 2 |
| | Enabled | Disabled | 4 |
| | Enabled | Enabled | 4 |

FPP Configuration Timing when DCLK-to-DATA [] = 1

Figure 12 shows the timing waveform for FPP configuration when using a MAX II or MAX V device as an external host. This waveform shows timing when the DCLK-to-DATA [] ratio is 1.

Figure 12. FPP Configuration Timing Waveform When the DCLK-to-DATA[] Ratio is 1 ^{(1), (2)}



Notes to Figure 12:

- (1) Use this timing waveform when the DCLK-to-DATA [] ratio is 1.
- (2) The beginning of this waveform shows the device in user mode. In user mode, nCONFIG, nSTATUS, and CONF_DONE are at logic-high levels. When nCONFIG is pulled low, a reconfiguration cycle begins.
- (3) After power-up, the Stratix V device holds nSTATUS low for the time of the POR delay.
- (4) After power-up, before and during configuration, CONF_DONE is low.
- (5) Do not leave DCLK floating after configuration. DCLK is ignored after configuration is complete. It can toggle high or low if required.
- (6) For FPP x16, use DATA [15..0]. For FPP x8, use DATA [7..0]. DATA [31..0] are available as a user I/O pin after configuration. The state of this pin depends on the dual-purpose pin settings.
- (7) To ensure a successful configuration, send the entire configuration data to the Stratix V device. CONF_DONE is released high when the Stratix V device receives all the configuration data successfully. After CONF_DONE goes high, send two additional falling edges on DCLK to begin initialization and enter user mode.
- (8) After the option bit to enable the INIT_DONE pin is configured into the device, the INIT_DONE goes low.

Figure 13. FPP Configuration Timing Waveform When the DCLK-to-DATA[] Ratio is >1 (1), (2)**Notes to Figure 13:**

- (1) Use this timing waveform and parameters when the DCLK-to-DATA [] ratio is >1. To find out the DCLK-to-DATA [] ratio for your system, refer to Table 49 on page 55.
- (2) The beginning of this waveform shows the device in user mode. In user mode, nCONFIG, nSTATUS, and CONF_DONE are at logic high levels. When nCONFIG is pulled low, a reconfiguration cycle begins.
- (3) After power-up, the Stratix V device holds nSTATUS low for the time as specified by the POR delay.
- (4) After power-up, before and during configuration, CONF_DONE is low.
- (5) Do not leave DCLK floating after configuration. You can drive it high or low, whichever is more convenient.
- (6) "r" denotes the DCLK-to-DATA [] ratio. For the DCLK-to-DATA [] ratio based on the decompression and the design security feature enable settings, refer to Table 49 on page 55.
- (7) If needed, pause DCLK by holding it low. When DCLK restarts, the external host must provide data on the DATA [31 . . 0] pins prior to sending the first DCLK rising edge.
- (8) To ensure a successful configuration, send the entire configuration data to the Stratix V device. CONF_DONE is released high after the Stratix V device receives all the configuration data successfully. After CONF_DONE goes high, send two additional falling edges on DCLK to begin initialization and enter user mode.
- (9) After the option bit to enable the INIT_DONE pin is configured into the device, the INIT_DONE goes low.

Table 51 lists the timing parameters for Stratix V devices for FPP configuration when the DCLK-to-DATA [] ratio is more than 1.

Table 51. FPP Timing Parameters for Stratix V Devices When the DCLK-to-DATA[] Ratio is >1 ⁽¹⁾

| Symbol | Parameter | Minimum | Maximum | Units |
|----------------------------|---|---|----------------------|---------|
| t_{CF2CD} | nCONFIG low to CONF_DONE low | — | 600 | ns |
| t_{CF2ST0} | nCONFIG low to nSTATUS low | — | 600 | ns |
| t_{CFG} | nCONFIG low pulse width | 2 | — | μ s |
| t_{STATUS} | nSTATUS low pulse width | 268 | 1,506 ⁽²⁾ | μ s |
| t_{CF2ST1} | nCONFIG high to nSTATUS high | — | 1,506 ⁽²⁾ | μ s |
| t_{CF2CK} ⁽⁵⁾ | nCONFIG high to first rising edge on DCLK | 1,506 | — | μ s |
| t_{ST2CK} ⁽⁵⁾ | nSTATUS high to first rising edge of DCLK | 2 | — | μ s |
| t_{DSU} | DATA [] setup time before rising edge on DCLK | 5.5 | — | ns |
| t_{DH} | DATA [] hold time after rising edge on DCLK | $N-1/f_{DCLK}$ ⁽⁵⁾ | — | s |
| t_{CH} | DCLK high time | $0.45 \times 1/f_{MAX}$ | — | s |
| t_{CL} | DCLK low time | $0.45 \times 1/f_{MAX}$ | — | s |
| t_{CLK} | DCLK period | $1/f_{MAX}$ | — | s |
| f_{MAX} | DCLK frequency (FPP $\times 8/\times 16$) | — | 125 | MHz |
| | DCLK frequency (FPP $\times 32$) | — | 100 | MHz |
| t_R | Input rise time | — | 40 | ns |
| t_F | Input fall time | — | 40 | ns |
| t_{CD2UM} | CONF_DONE high to user mode ⁽³⁾ | 175 | 437 | μ s |
| t_{CD2CU} | CONF_DONE high to CLKUSR enabled | $4 \times$ maximum DCLK period | — | — |
| t_{CD2UMC} | CONF_DONE high to user mode with CLKUSR option on | $t_{CD2CU} + (8576 \times \text{CLKUSR period})$ ⁽⁴⁾ | — | — |

Notes to Table 51:

- (1) Use these timing parameters when you use the decompression and design security features.
- (2) You can obtain this value if you do not delay configuration by extending the nCONFIG or nSTATUS low pulse width.
- (3) The minimum and maximum numbers apply only if you use the internal oscillator as the clock source for initializing the device.
- (4) To enable the CLKUSR pin as the initialization clock source and to obtain the maximum frequency specification on these pins, refer to the Initialization section of the “Configuration, Design Security, and Remote System Upgrades in Stratix V Devices” chapter.
- (5) N is the DCLK-to-DATA ratio and f_{DCLK} is the DCLK frequency the system is operating.
- (6) If nSTATUS is monitored, follow the t_{ST2CK} specification. If nSTATUS is not monitored, follow the t_{CF2CK} specification.

